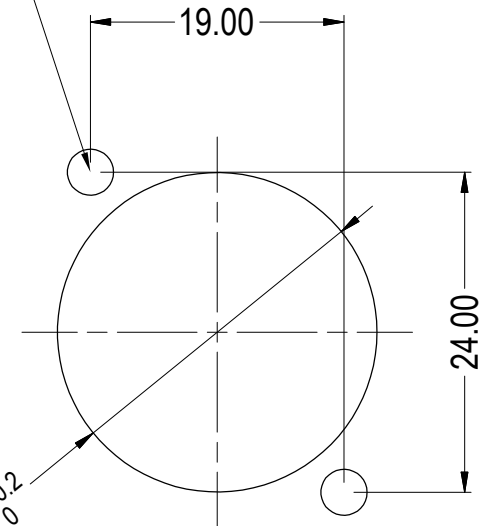
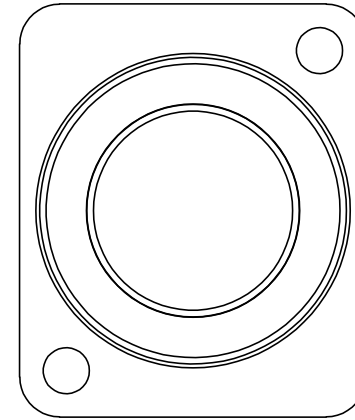


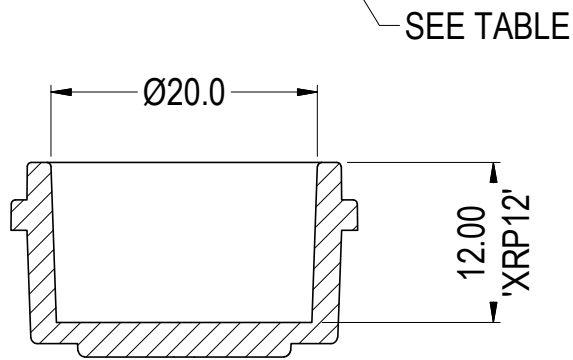
PART No.	DESCRIPTION
CP30400	Ø3.5 CSK 82° x Ø5.85
CP30400X	Ø2.5 PLAIN HOLE

ISS.	AMEND	DATE
1	ISSUED	17/07/18
2	TABLE PT NO. COR	6/5/2021

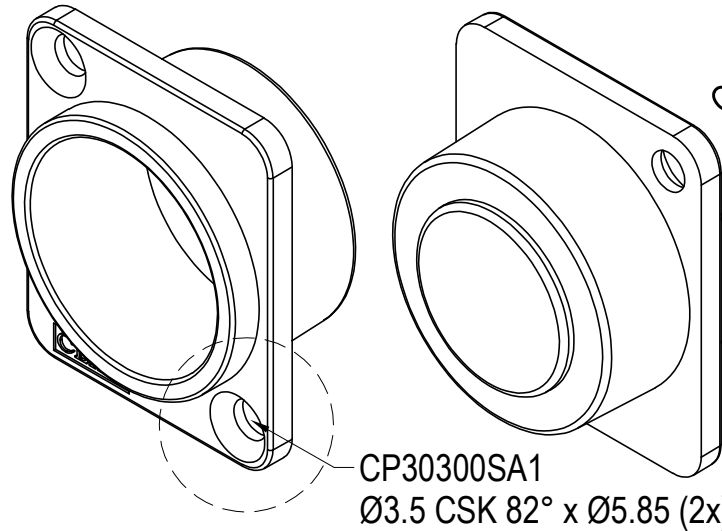
CAN BE FRONT OR REAR MOUNTED. HOLE SIZE TO SUIT



PANEL CUTOUT  
MAXIMUM PANEL  
THICKNESS 3mm



SEE TABLE



CP30400SA1X  
Ø2.5 PLAIN HOLE (2x)

CP30300SA1  
Ø3.5 CSK 82° x Ø5.85 (2x)

**RoHS**  
COMPLIANT

TOLERANCE  
NO DEC. PLACE ± 0.50  
1 DEC. PLACE ± 0.20  
2 DEC. PLACE ± 0.10  
HOLE Ø ± 0.10  
ANGLES ± 1/2°  
UNLESS OTHERWISE STATED

DO NOT SCALE

**Cliff Electronic Components Ltd.**  
76 Holmethorpe Avenue, Holmethorpe Industrial Estate,  
Redhill, Surrey, RH1 2PF, England, UK  
Tel: 01737-771375 Fax: 01737-766012 Website: www.cliffuk.co.uk

DIMENSIONS IN MILLIMETERS UNLESS OTHERWISE STATED. WORK TO DIMENSIONS. REMOVE ALL BURRS. IF IN DOUBT ASK.

3rd ANGLE PROJECTION:

MATERIAL: POLYAMIDE (V2)

TITLE: XRP12 PLASTIC BLANK

FINISH: BLACK

DRAWN: T.J.O.

APPROVED: DPJ

DRWG. No. **CP30400SA1**

FORM: A4DRWGH

THE CONTENTS OF THIS DOCUMENT MUST NOT BE COPIED OR DISCLOSED TO A 3rd PARTY WITHOUT WRITTEN PERMISSION OF CLIFF UK. © 2018