

CLIFF

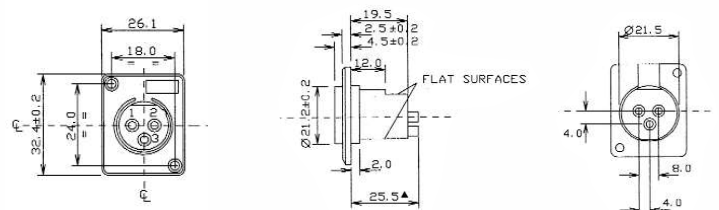
Male Plastic 3 pin XLR Connectors

The **CLIFF**® range of professional standard chassis and PCB mounting male XLR receptacles is designed for use in numerous applications including professional and consumer audio, broadcast and industrial uses. The design offers an economical alternative to higher priced metal XLR connectors. Our products are manufactured to strict quality and performance standards. These components feature a tough nylon construction with special low noise contacts. Models for hand solder, or horizontal or vertical PCB mounting. Optional chassis grounding versions also available.



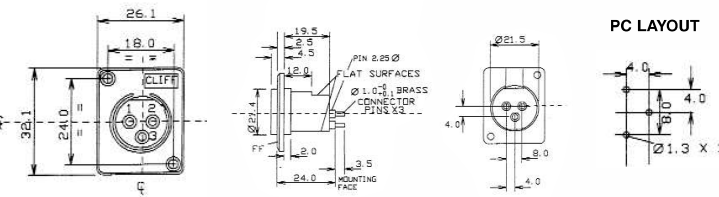
ACM 3 Pin chassis mounting Male XLR with counter sunk mounting holes for M3 screw fixing. XACM has non counter sunk mounting holes for self-tap screw fixing. Nickel Silver plated Brass contacts.

**ACM (CP3000)
XACM (CP30001)**



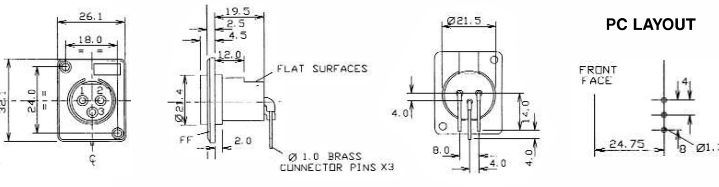
XACM / PCS 3 Pin vertical PCB mounting Male XLR with non counter sunk mounting holes for self-tap screw fixing. ACM PCS has counter sunk mounting holes for M3 screw fixing. Nickel Silver plated Brass contacts.

**XACM / PCS (CP30004)
ACM / PCS (CP30003)**



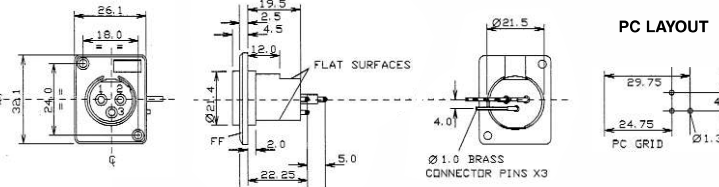
ACM / PC 3 Pin horizontal PCB mounting Male XLR with counter sunk mounting holes for M3 screw fixing. XACM / PC has non counter sunk mounting holes for self-tap screw fixing. Nickel Silver plated Brass contacts.

**ACM / PC (CP30005)
XACM / PC (CP300051)**



XACMR / PC 3 Pin horizontal lateral right PCB mounting Male XLR with non counter sunk mounting holes for self-tap screw fixing. Nickel Silver plated Brass contacts.

XACMR / PC (CP30007)



Cliff Electronic Components, Ltd.

76 Holmethorpe Avenue, Holmethorpe Ind. Est.

Redhill, Surrey RH1 2PF. England

Tel: +44 (0) 1737 771375

Fax: +44 (0) 1737 766012

Email: sales@cliffuk.co.uk

www.cliffuk.co.uk

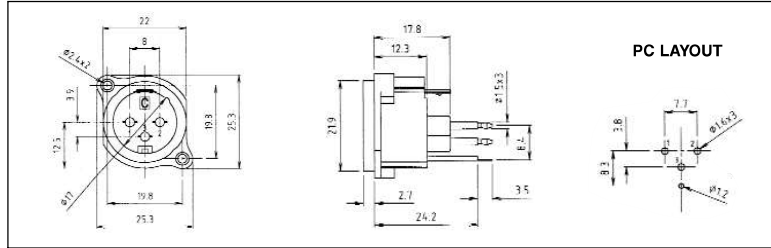


Male Plastic 3 pin XLR Connectors

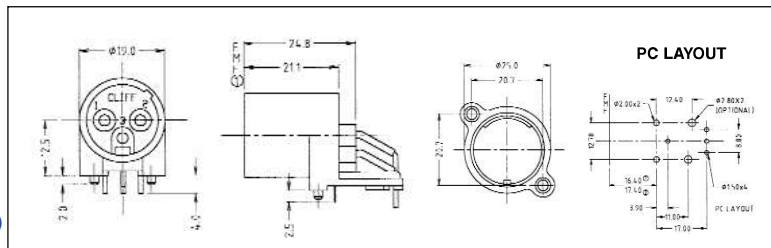


XNACM2V / PCS 3 Pin vertical PCB mounting Male XLR with non counter sunk mounting holes for self-tap screw fixing. Gold plated Brass contacts standard.

XACM2V / PCS (CP30008)

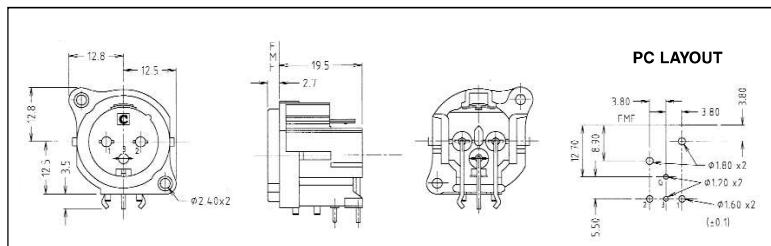


NACM / PC low profile 3 Pin horizontal PCB mounting Male XLR. Nickel Silver or Gold plated Brass contacts available. Optional mounting escutcheon sold separately.
NACM/PC (FCR3002)
NACM/PC Gold (FCR30022)
Escutcheon (CP30025)



XNACM5 / PC90 3 Pin horizontal PCB mounting male XLR for self-tap screw fixing. Gold plated Brass contacts. Vertical PCB mounting also available, part XNACM5 / PCS

XNACM5 / PC90 (CP300252)
XNACM5 / PCS (CP300251)



Electrical Specifications:

Rated Current: 3 pin 5A nominal. 15A max.
Rated Voltage: 250 Vac max.
Operating Temperature: -30° C to + 80° C.
Contact Resistance (new): <10mΩ.
Contact Resistance (after 1000 insertions): 15mΩ max.
Dielectric Withstand: 1600Vac between all contacts.
Insulation Resistance: >10⁹Ω @ 500 Vdc.
Capacitance between contacts: <5pF.

Mechanical Specifications:

Insertion Life (Minimum): >1000 insertions and removals.
Insertion Force: <10N.
Compatibility: Refer to list on our website.

Materials:

Housing: Polyamide 30% Glass reinforced.
Contacts: Brass, PbRz.
Plating: 5µm. Silver over 5µm. of Nickel.
 Gold plating available.