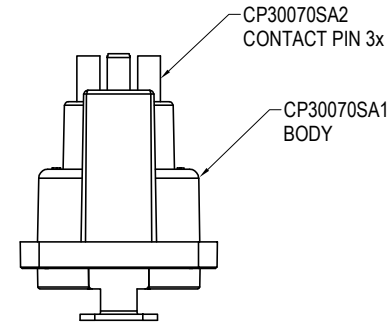
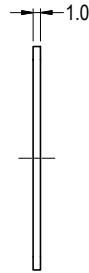
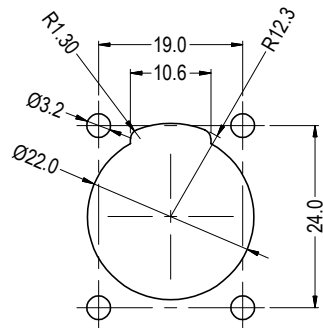
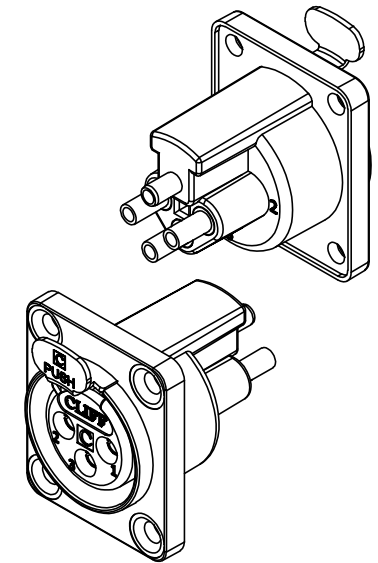
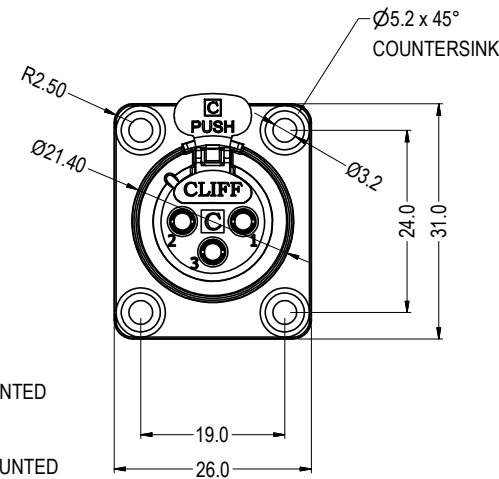
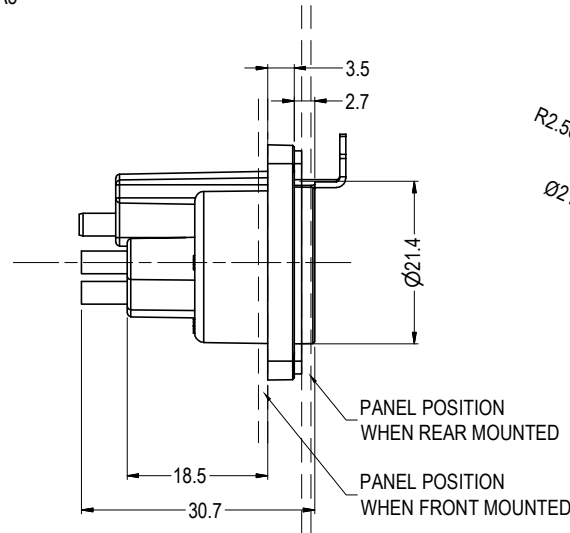
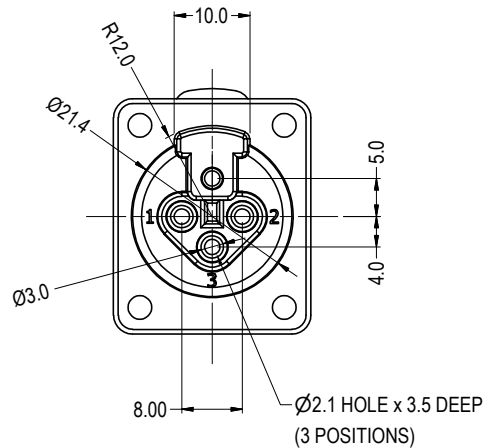


SUPPLIED WITH GASKET  
CP30080SA5

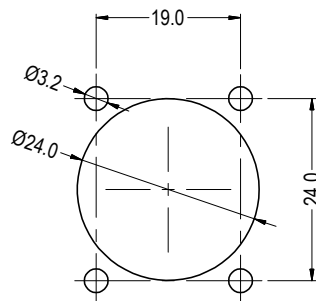


CP30070SA2  
CONTACT PIN 3x

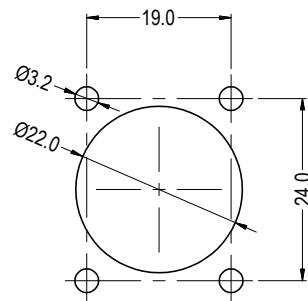
CP30070SA1  
BODY



IDEAL PANEL CUT-OUT  
FOR FRONT MOUNTING



SIMPLIFIED PANEL CUT-OUT  
FOR FRONT MOUNTING



PANEL CUT-OUT  
FOR REAR MOUNTING

ITEM	DESCRIPTION	MATERIAL	FINISH
1	BODY MOULDING	PA66 UL V2	BLACK
2	CONTACT PINS (3x)	BRASS	GOLD PLATE
3	AT GASKET	NEOPRENE	BLACK

**RoHS**  
COMPLIANT

**TOLERANCE**  
NO DEC. PLACE ±  
1 DEC. PLACE ±  
2 DEC. PLACE ±  
HOLE Ø ±  
ANGLES ±  
UNLESS  
OTHERWISE STATED

DO NOT SCALE

**Cliff Electronic Components Ltd.**

76 Holmetherpe Avenue, Holmetherpe Industrial Estate,  
Redhill, Surrey, RH1 2PF, England, UK  
Tel: 01737-771375 Fax: 01737-766012 Website: www.cliffuk.co.uk

THE CONTENTS OF THIS DOCUMENT MUST NOT BE COPIED OR DISCLOSED  
TO A 3rd PARTY WITHOUT WRITTEN PERMISSION OF CLIFF UK © 2013

DIMENSIONS IN MILLIMETERS UNLESS OTHERWISE STATED. WORK TO DIMENSIONS. REMOVE ALL BURRS. IF IN DOUBT ASK.

MATERIAL: SEE TABLE

FINISH: SEE TABLE

DRAWN: NJB

APPROVED: DPJ

3rd ANGLE PROJECTION:

TITLE: LATCHING AIR-TIGHT 3-PIN FEMALE XLR SOCKET

DRWG. No. CP30080

FORM: A4DRWGH