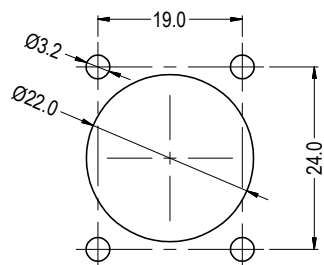
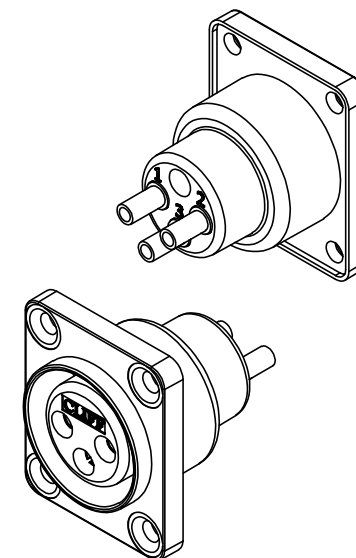
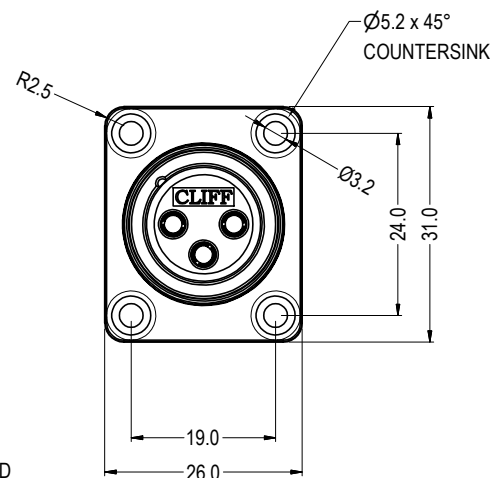
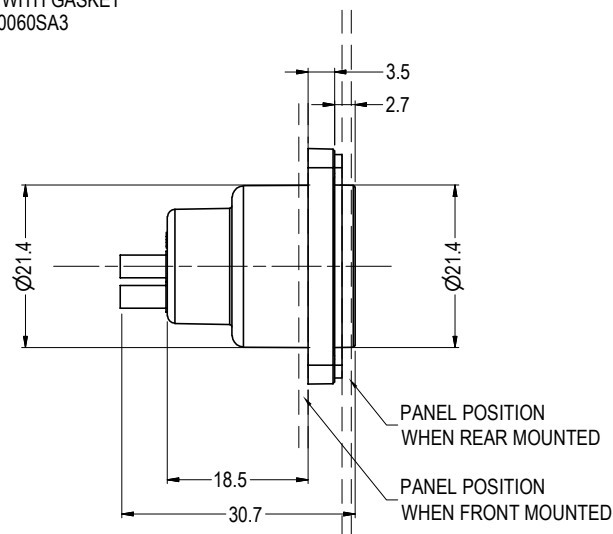
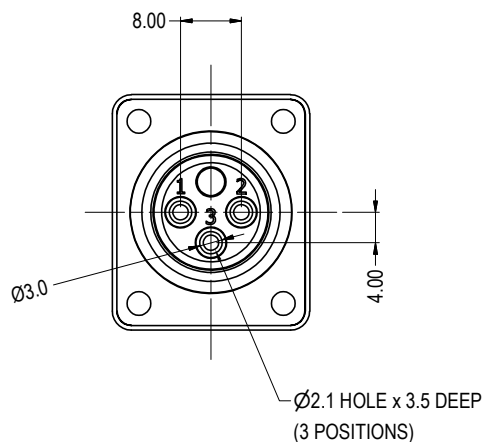
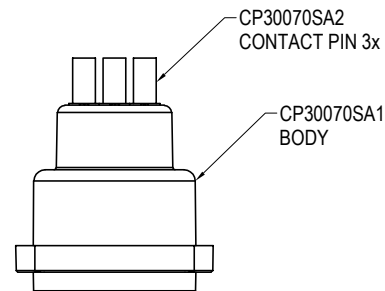
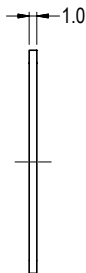


SUPPLIED WITH GASKET
CP30060SA3



PANEL CUT-OUT

ITEM	DESCRIPTION	MATERIAL	FINISH
1	BODY MOULDING	PA66 UL V2	BLACK
2	CONTACT PINS (3x)	BRASS	GOLD PLATE
3	AT GASKET	NEOPRENE	BLACK

RoHS
COMPLIANT

TOLERANCE
 NO DEC. PLACE ±
 1 DEC. PLACE ±
 2 DEC. PLACE ±
 HOLE Ø ±
 ANGLES ±
 UNLESS
 OTHERWISE STATED

DO NOT SCALE

Cliff Electronic Components Ltd.

76 Holmetherpe Avenue, Holmetherpe Industrial Estate,
Redhill, Surrey, RH1 2PF, England, UK
Tel: 01737-771375 Fax: 01737-766012 Website: www.cliffuk.co.uk

THE CONTENTS OF THIS DOCUMENT MUST NOT BE COPIED OR DISCLOSED
TO A 3rd PARTY WITHOUT WRITTEN PERMISSION OF CLIFF UK. © 2012

DIMENSIONS IN MILLIMETERS UNLESS OTHERWISE STATED. WORK TO DIMENSIONS. REMOVE ALL BURRS. IF IN DOUBT ASK.

MATERIAL: SEE TABLE

FINISH: SEE TABLE

DRAWN: NJB

APPROVED: DPJ

3rd ANGLE PROJECTION:

TITLE: AIR-TIGHT 3-PIN FEMALE XLR SOCKET

DRWG. No. CP30070

FORM: A4DRWGH