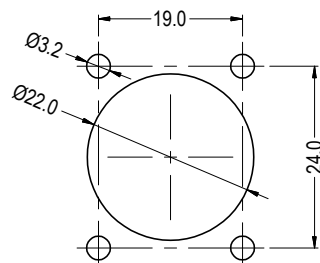
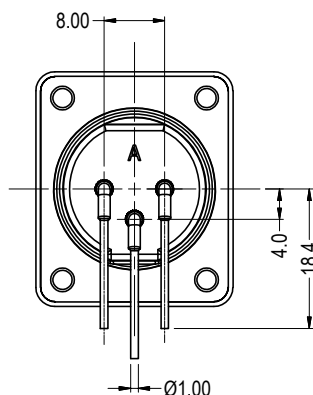
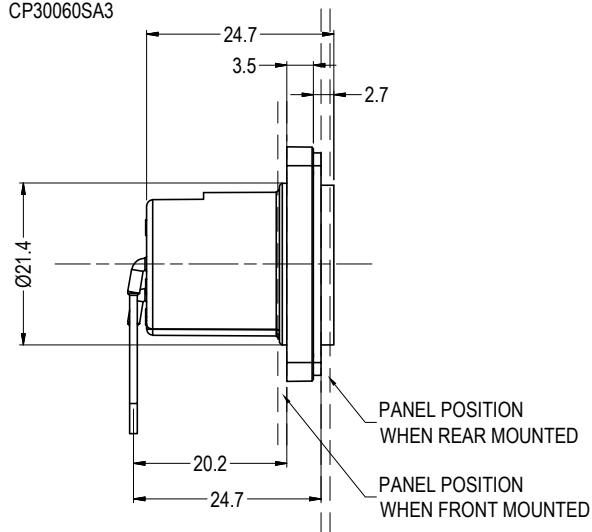


SUPPLIED WITH GASKET
CP30060SA3

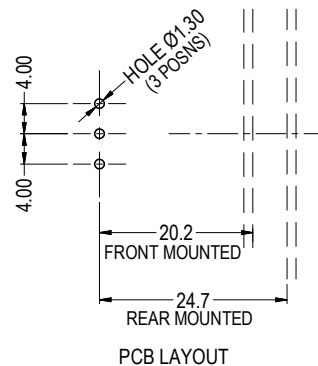


PANEL CUT-OUT

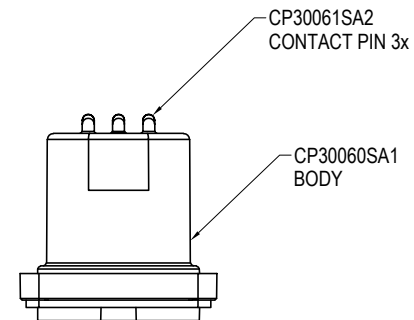


PANEL POSITION
WHEN REAR MOUNTED

PANEL POSITION
WHEN FRONT MOUNTED

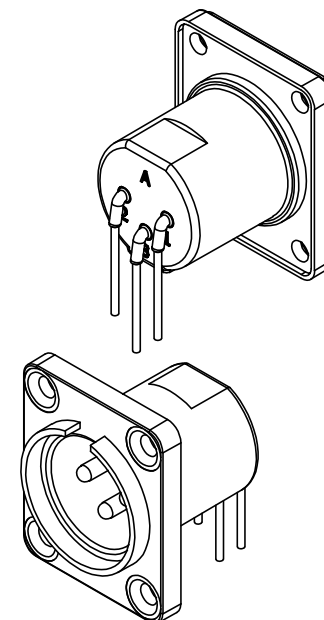
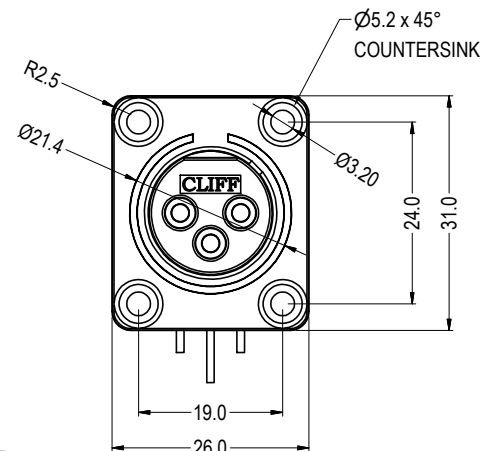


PCB LAYOUT



CP30061SA2
CONTACT PIN 3x

CP30060SA1
BODY



ISS.	AMEND	DATE
1	ISSUED	05/11/12
2	CUT-OUT VIEW REVISE	01/09/14
3	ADD MATERIAL TABLE	18/06/21

ITEM	DESCRIPTION	MATERIAL	FINISH
1	BODY MOULDING	PA66 UL V2	BLACK
2	CONTACT PINS (3x)	BRASS	GOLD PLATE
3	AT GASKET	NEOPRENE	BLACK

RoHS
COMPLIANT

TOLERANCE
NO DEC. PLACE ±
1 DEC. PLACE ±
2 DEC. PLACE ±
HOLE Ø ±
ANGLES ±
UNLESS
OTHERWISE STATED

Cliff Electronic Components Ltd.

76 Holmethorpe Avenue, Holmethorpe Industrial Estate,
Redhill, Surrey, RH1 2PF, England, UK
Tel: 01737-771375 Fax: 01737-766012 Website: www.cliffuk.co.uk

THE CONTENTS OF THIS DOCUMENT MUST NOT BE COPIED OR DISCLOSED
TO A 3rd PARTY WITHOUT WRITTEN PERMISSION OF CLIFF UK © 2012

DIMENSIONS IN MILLIMETERS UNLESS OTHERWISE STATED. WORK TO DIMENSIONS. REMOVE ALL BURRS. IF IN DOUBT ASK.

MATERIAL: SEE TABLE

FINISH: SEE TABLE

DRAWN: NJB

APPROVED: DPJ

3rd ANGLE PROJECTION:

TITLE: AIR-TIGHT MALE 3-PIN 90° PCB XLR SOCKET

DRWG. No. CP30062

DO NOT SCALE

FORM: A4DRWGH