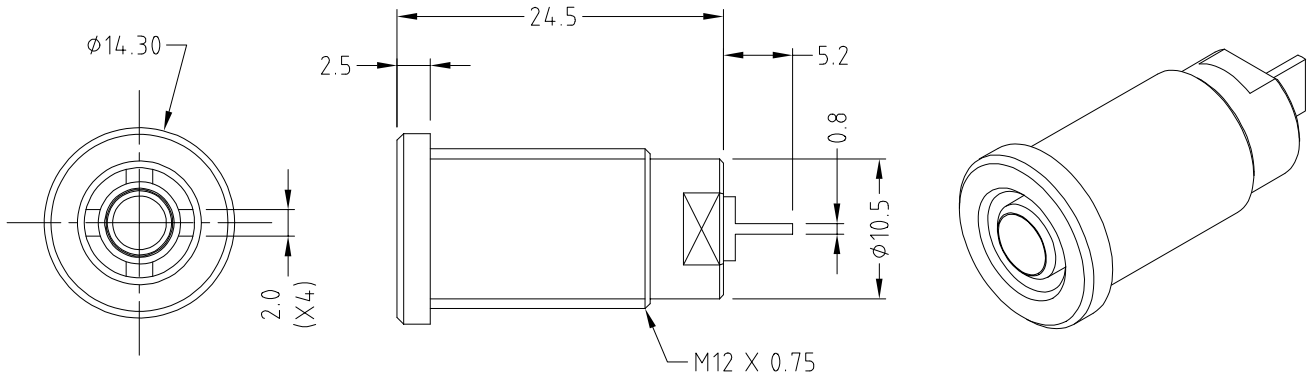


CLIFF

4mm PANEL SOCKET S16N SOLDER TAG



FCR7357B
S16N BLACK WNW
SOLDER TAG VERSION



FCR7357G
S16N GREEN WNW
SOLDER TAG VERSION



FCR7357L
S16N BLUE WNW
SOLDER TAG VERSION



FCR7357R
S16N RED WNW
SOLDER TAG VERSION



FCR7357Y
S16N YELLOW WNW
SOLDER TAG VERSION

Shrouded, 4mm, nickel or tin plated socket. Mates with shrouded or unshrouded plugs.
Rated 1000V, CAT III. 24A for Solder tag
Supplied with M12 slotted ring nut and washer.