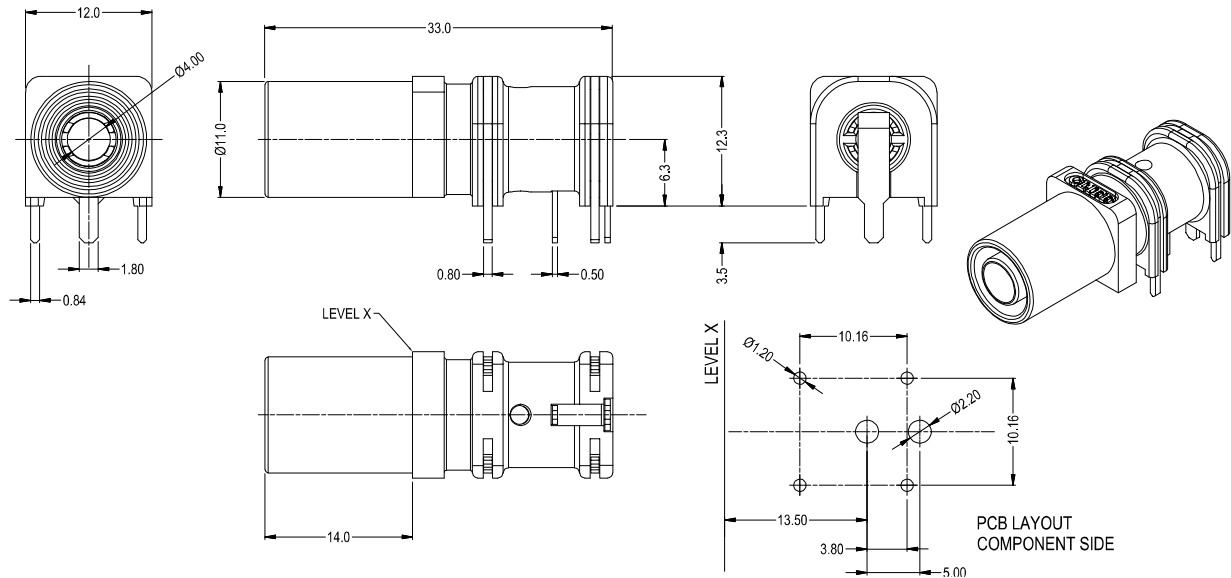


CLIFF

4mm PANEL SOCKET S16N-2PC

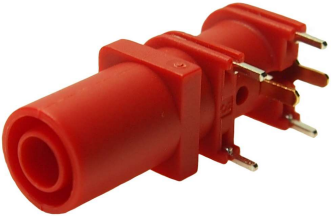


These 4mm sockets consist of two insulated, semi-circular contacts, which are connected to each other when a plug is inserted (switch function). The socket is PCB mounted.



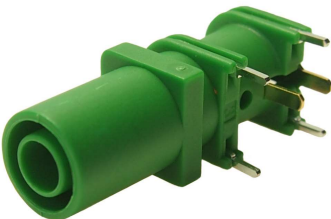
FCR7370B - S16N-2PC Black

4mm shrouded socket. Gold plated
Rated: 1KV CAT III - 10A



FCR7370R - S16N-2PC Red

4mm shrouded socket. Gold plated
Rated: 1KV CAT III - 10A



FCR7370G - S16N-2PC Green

4mm shrouded socket. Gold plated
Rated: 1KV CAT III - 10A



FCR7370L - S16N-2PC Blue

4mm shrouded socket. Gold plated
Rated: 1KV CAT III - 10A

Operating Temperature: -10°C to +60°C