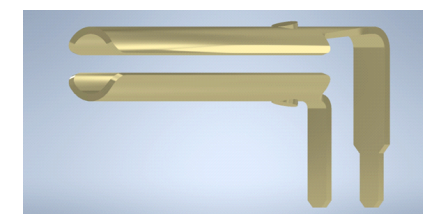
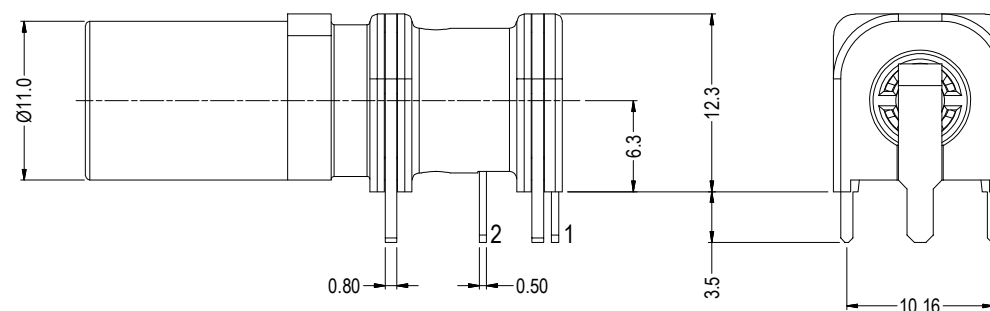
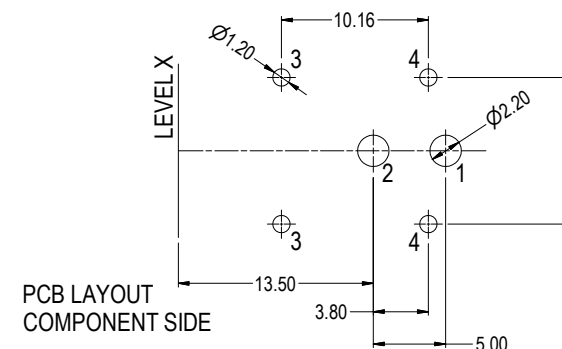
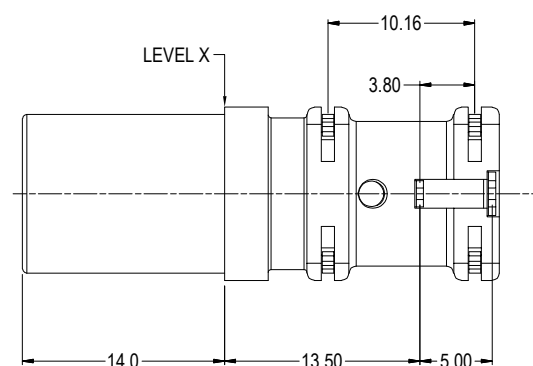


BODY MOULDING: NYLON 66 - UL94-V2
MOUNTING CONTACTS: BRASS, TIN PLATED
SOCKET CONTACTS: BRASS, GOLD PLATED
RATED: 1KV CAT III 10A
OPERATING TEMPERATURE: -10°C TO +60°C




4mm PLUG
MAKES ON INSERTION

PART No.	COLOUR
FCR7370B	BLACK
FCR7370G	GREEN
FCR7370L	BLUE
FCR7370R	RED



RoHS
✓ COMPLIANT

NO DEC. PLACE ±
1 DEC. PLACE ±
2 DEC. PLACE ±
HOLE Ø ±
ANGLES ±
UNLESS
OTHERWISE STATED

3rd ANGLE PROJECTION: 

TITLE: 2 POLE 4mm PANEL SOCKET S16N-2PC

DRWG. No.	FCR7370
-----------	---------

FORM: A4DRWGH

THE CONTENTS OF THIS DOCUMENT MUST NOT BE COPIED OR DISCLOSED
TO A 3rd PARTY WITHOUT WRITTEN PERMISSION OF CLIFF UK. © 2024