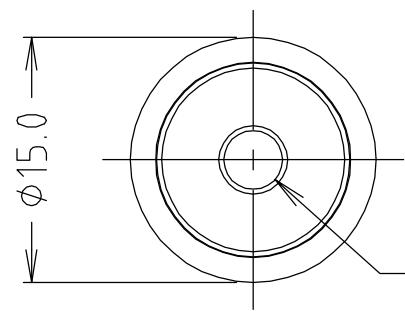
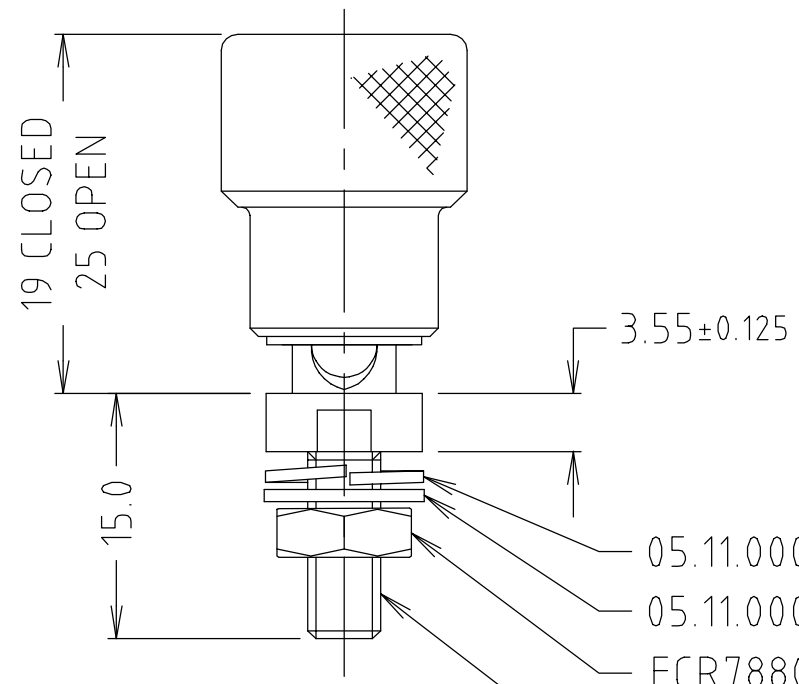


ISS.	AMEND	DATE
1	ISSUED	15/03/99
2	WAS CL2160B	18/02/05
3	UPDATED	16/11/12
4	RATING ADDED	02/10/15



RED OR BLACK COLOURED INSERT ASSEMBLED.
 Ø6.80 STANDARD OR Ø3.60 'Y' TYPE
 CENTRE HOLE SEE TABLE



VARIANTS			
PART NUMBER	USES INSERT	INSERT COLOUR	INSERT HOLE TYPE
CL2160B	FCR7916B	BLACK	Ø6.80 STANDARD
CL2160R	FCR7916R	RED	Ø6.80 STANDARD
CL2160BY	FCR7915B	BLACK	Ø3.60 Y TYPE
CL2160RY	FCR7915R	RED	Ø3.60 Y TYPE

- 05.11.0006.87 - SPRING WASHER
- 05.11.0002.53 - PLAIN WASHER
- FCR7880SA7 - NUT
- 0508.1701.52 - SPINDLE ASSEMBLY
- 10x32 UNF THREAD

CURRENT RATING: 30A
 SUPPLIED UNASSEMBLED AS A KIT OF PARTS
 ALL ITEMS 1x PER KIT.

RoHS ✓ COMPLIANT
TOLERANCE
NO DEC. PLACE ± 0.50
1 DEC. PLACE ± 0.20
2 DEC. PLACE ± 0.10
HOLE Ø ± 0.10
ANGLES ± 1/2°
UNLESS OTHERWISE STATED

1ST DRAWN : 4/2/99

Cliff Electronic Components Ltd. 76 Holmethorpe Avenue, Holmethorpe Industrial Estate, Redhill, Surrey, RH1 2PF, England, UK Tel: 01737-771375 Fax: 01737-766012 Website: www.cliffuk.co.uk	DIMENSIONS IN MILLIMETERS UNLESS OTHERWISE STATED. WORK TO DIMENSIONS. REMOVE ALL BURRS. IF IN DOUBT ASK.		3rd ANGLE PROJECTION:	DO NOT SCALE
	MATERIAL: BRASS / NYLON 6	FINISH: GOLD FLASH / SPARKED TO 32 VDI		TITLE: HI FI TERMINAL TP/6CS
DRAWN: C.A.M.J.	APPROVED: R.W.T.	DRWG. No. CL2160	FORM: A4DRWGH	