

# CLIFF

## SLIDER KNOBS

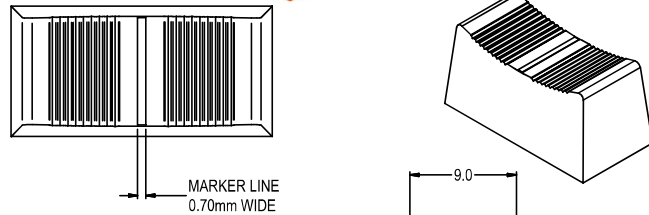
Ten different designs are produced. 3 types have option of 4mm. 6/8mm shaft fitting. All knobs have matt non reflective finish to match our K9-K12 series and C18. Standard colour - Black. Electrically conductive models available.

**CS1** Length 23mm. Width 11mm. Height 11mm. An electrically conductive version is available.



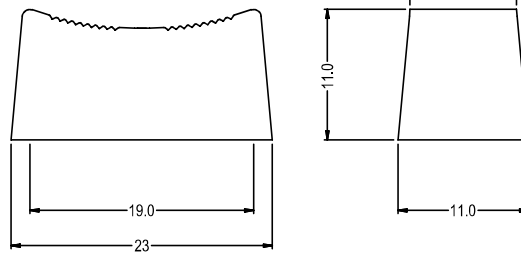
**CS1 - Shaft 6/8mm**

- CP3155 - Black
- CP3160 - Blue
- CP3165 - Green
- CP3170 - Grey
- CP3175 - Red
- CP3180 - White
- CP3185 - Yellow



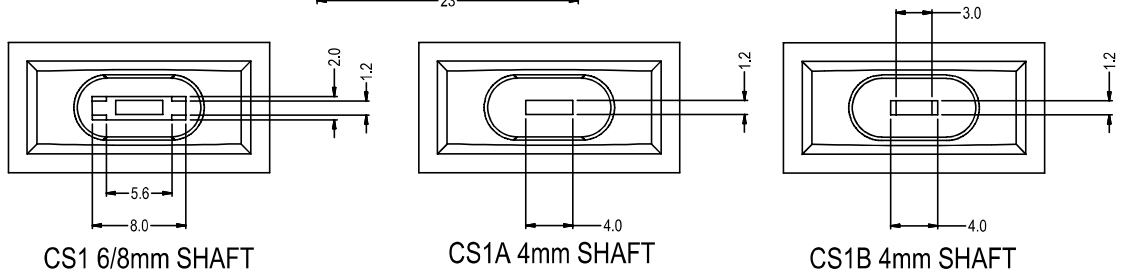
**CS1A - Shaft 4mm**

- CP3260 - Black
- CP3265 - Blue
- CP3270 - Green
- CP3272 - Grey
- CP3275 - Red
- CP3280 - White

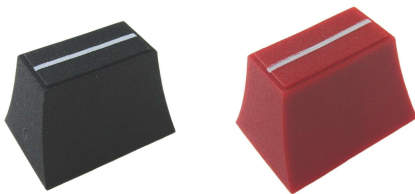


**CS1B - Shaft 4mm**

- CP3261 - Black
- CP3273 - Grey
- CP3276 - Red



**CS2** Length 20mm. Width 14mm. Height 13mm.



**CS2 - Shaft 6/8mm**

- CP3190 - Black

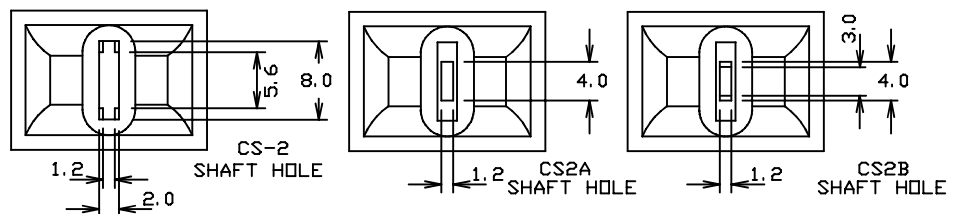
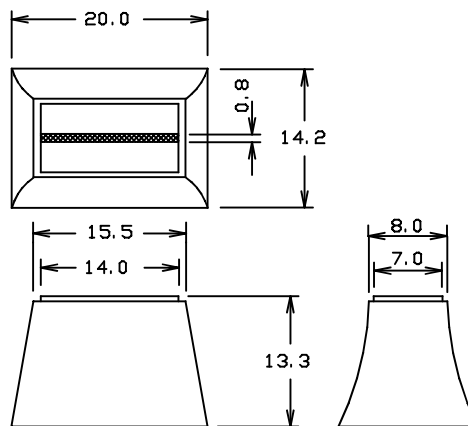
**CS2A - Shaft 4mm**

- CP3250 - Black

**CS2B - Shaft 4mm**

- CP3193 - Black

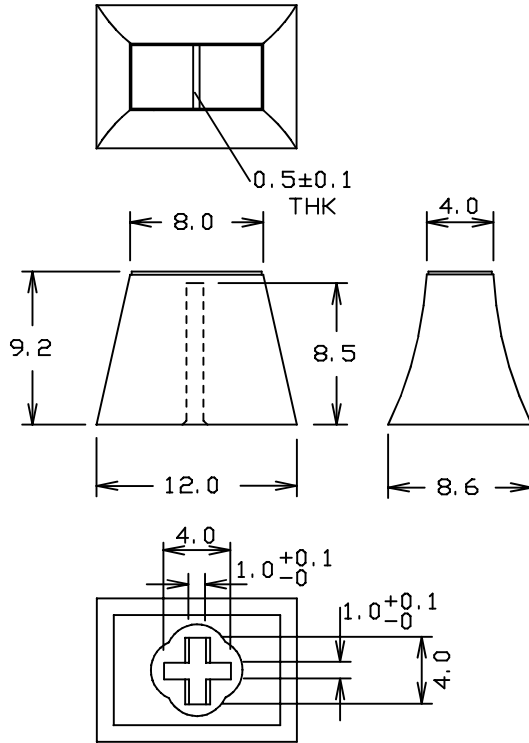
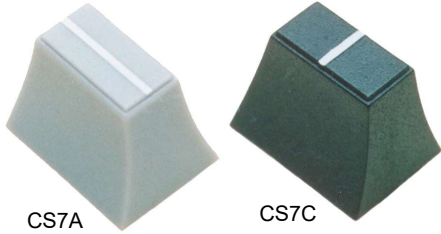
- CP3195 - Red



# CLIFF

## SLIDER KNOBS

**CS7** Length 12mm. Width 9mm. Height 9mm.



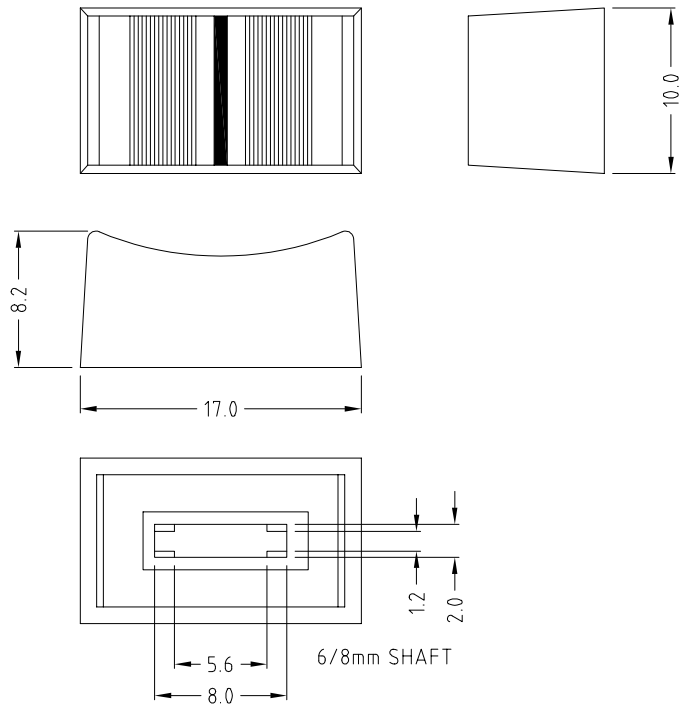
**CS7A - Shaft 4mm Parallel marker line**

- CP3290 - Black with White ML
- CP3295 - Grey with White ML
- CP3296 - Grey with Black ML
- CP3300 - White with Black ML

**CS7C - Shaft 4mm 90° marker line**

- CP3301 - Black with White ML
- CP33041 - Grey with White ML
- CP33043 - Anthracite Grey with White ML

**CS8** Length 17mm. Width 10mm. Height 8mm.



**CS8 - Shaft 6/8mm**

- CP3305 - Black
- CP3320 - Red
- CP3325 - White

# CLIFF

## SLIDER KNOBS

**CS9** Length 27mm. Width 16mm. Height 9mm.

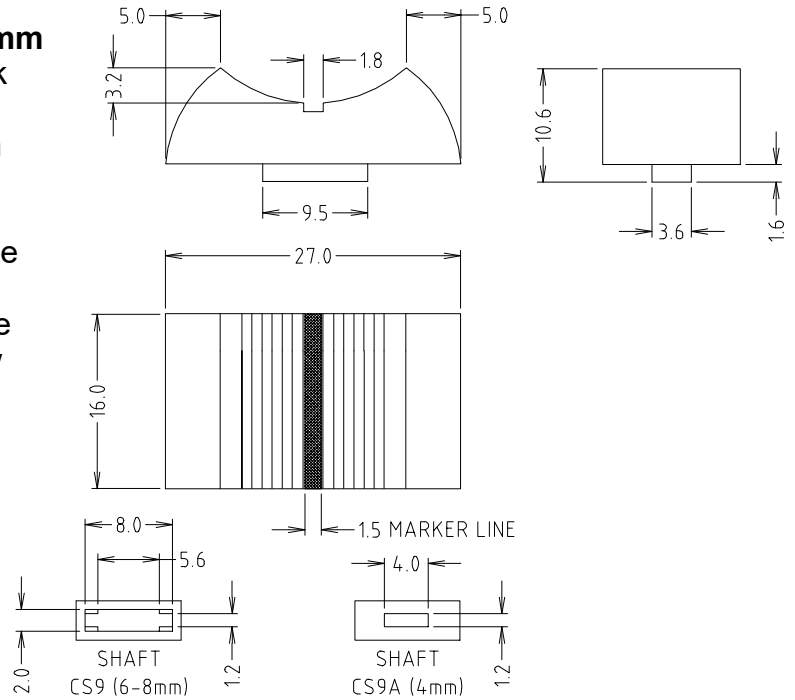


**CS9 - Shaft 6/8mm**

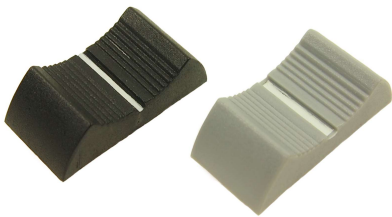
- CP3335 - Black
- CP3340 - Blue
- CP3345 - Brown
- CP3350 - Green
- CP3355 - Grey
- CP3357 - Orange
- CP3360 - Red
- CP3365 - White
- CP3370 - Yellow

**CS9A - Shaft 4mm**

- CP33350 - Black
- CP3341 - Blue
- CP3346 - Brown
- CP3351 - Green
- CP3356 - Grey
- CP3358 - Orange
- CP3361 - Red
- CP33650 - White
- CP3371 - Yellow

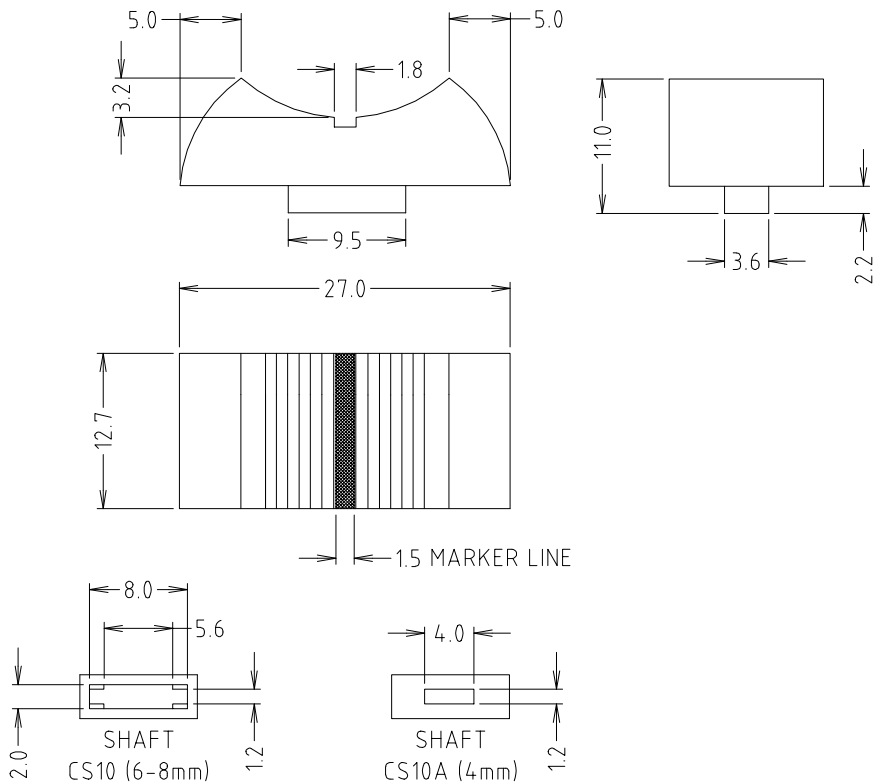


**CS10** Length 27mm. Width 13mm. Height 8mm.



**CS10 - Shaft 6/8mm**

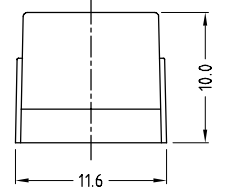
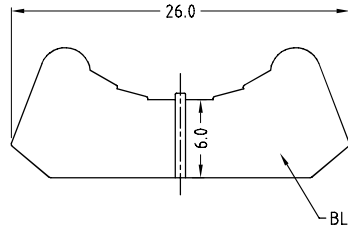
- CP3375 - Black NO ML
- CP33764 - Grey with White ML
- CP33765 - Grey with Black ML
- CP33766 - Red NO ML
- CP3377 - White No ML





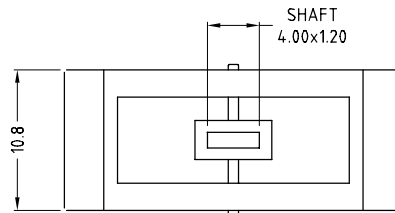
# SLIDER KNOBS

**CS10R** Length 26mm. Width 12mm. Height 10mm.  
Soft-touch finish.

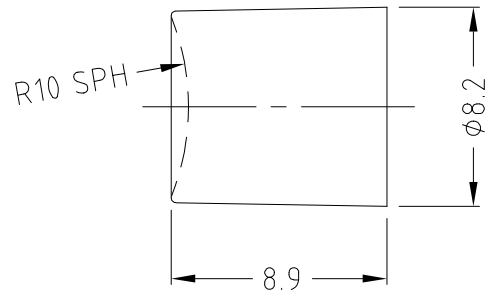
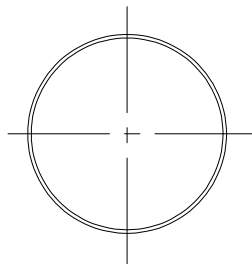


**CS10R - Shaft 4mm**

- FC72621 - Black with moulded white marker line
- FC72622 - Black with moulded red marker line
- FC72623 - Black with moulded blue marker line
- FC72624 - Black with moulded green marker line
- FC72625 - Black with moulded yellow marker line
- FC72626 - Black with moulded grey marker line



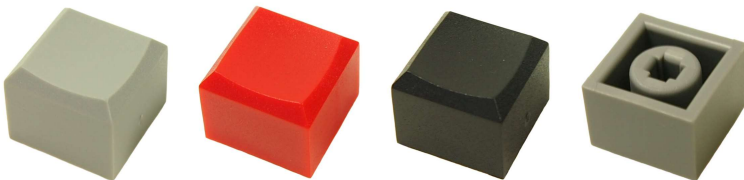
**CS11** Diameter 8mm. Height 8mm.  
Designed to fit a square shaft of push-button switches and 4mm or 6mm slider shafts.



**CS11**

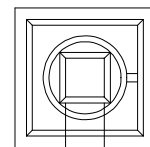
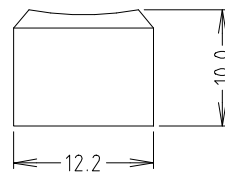
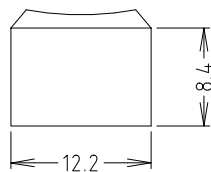
- CP3400 - Black
- CP3405 - White
- CP3410 - Grey
- CP3411 - Red

**CS12** Length 12.2mm. Width 12.2mm. Height 10mm. Designed to fit a 3.3mm shaft of push-button switches.



**CS12 - Shaft 3.3mm**

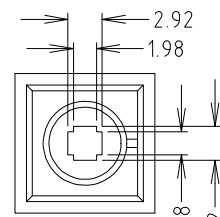
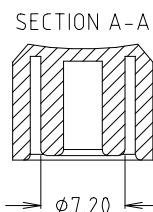
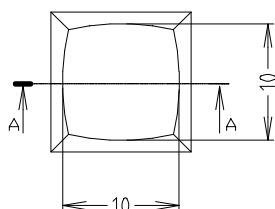
- CP3427 - Grey
- CP3431 - Red
- CP3433 - Black
- CP3435 - Opaque



SHAFT 3.32x3.32±0.05

**CS12F - Shaft 3x2mm**

- CP3428 - Grey



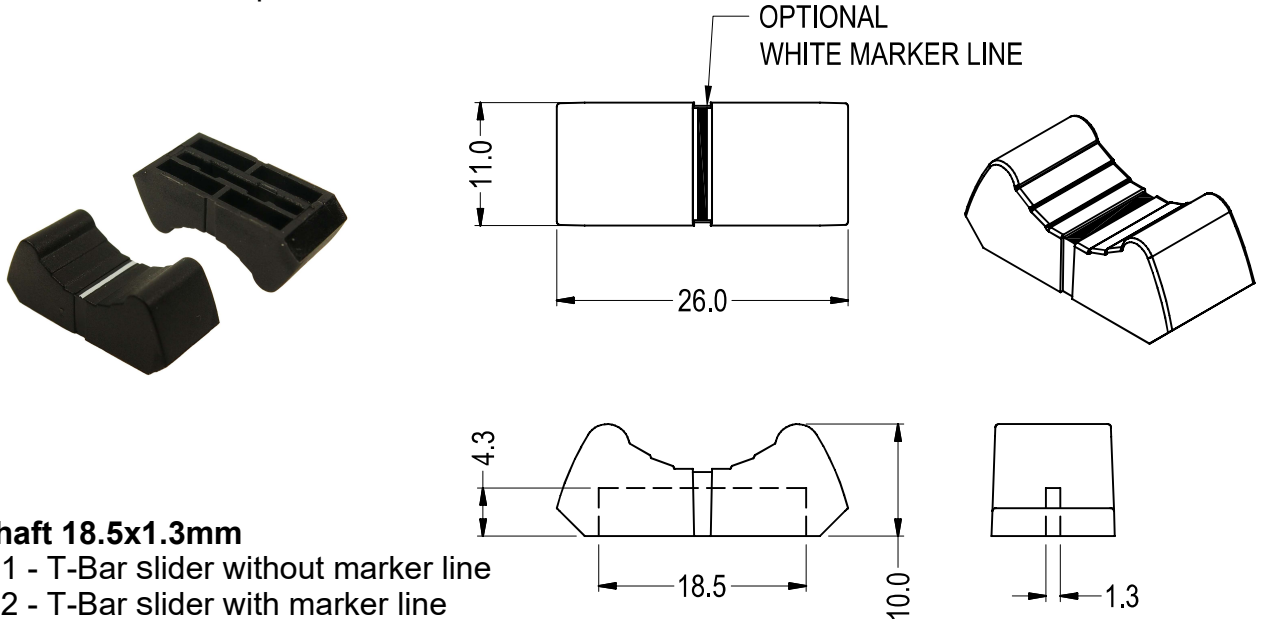
CS12F

TO FIT 3mm X 2mm RECTANGULAR SHAFT

# CLIFF

## SLIDER KNOBS

**CS13** Length 26mm. Width 11mm. Height 10mm.  
 Conductive version available in black ONLY. Surface resistivity  $10^3$  Ohms/SQ.  
 Non conductive version is available in black as standard. Other colours available subject to minimum order quantities.



- CS13 - shaft 18.5x1.3mm**  
 CP343601 - T-Bar slider without marker line  
 CP343602 - T-Bar slider with marker line  
 CP343611 - conductive T-Bar slider without marker line  
 CP343612 - conductive T-Bar slider with marker line

### Shaft Details (Typical)

