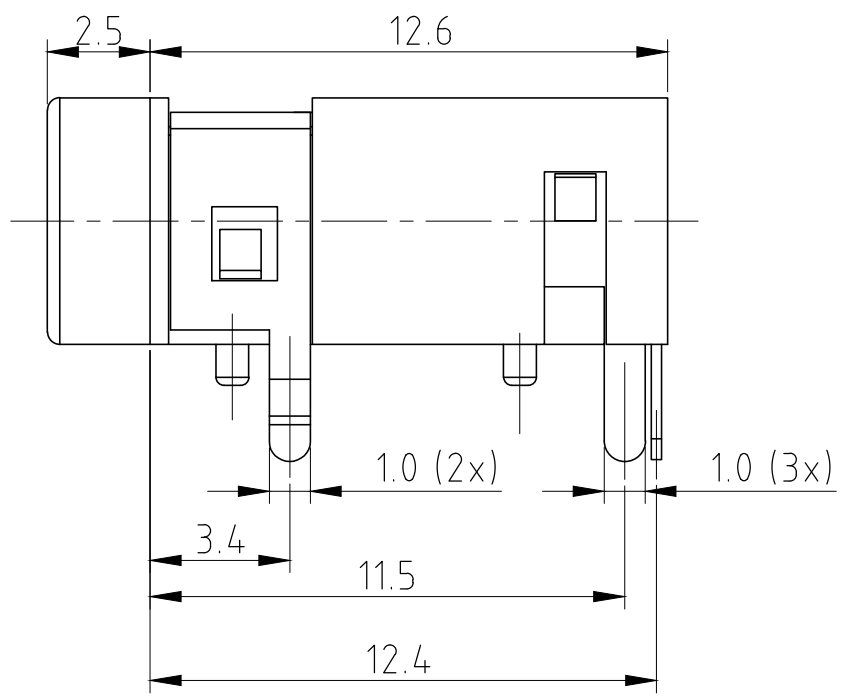
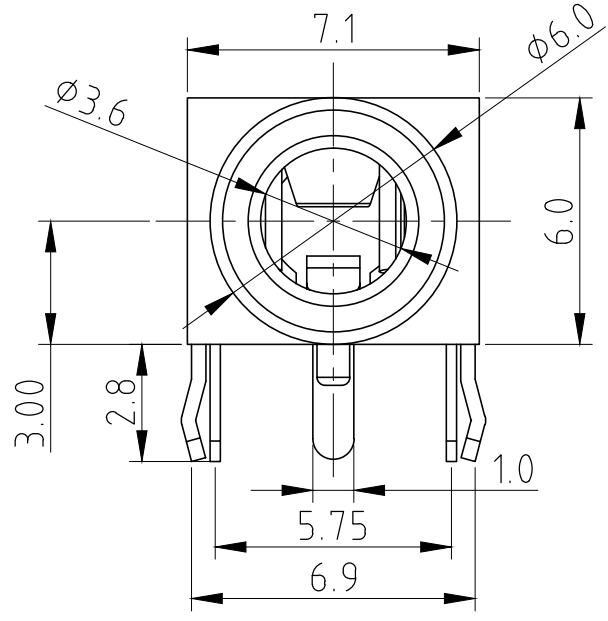
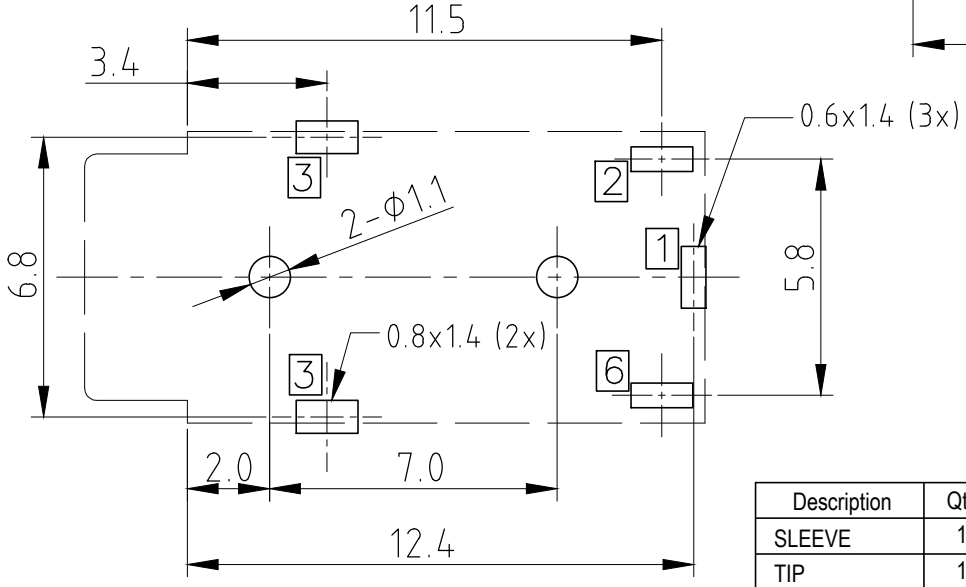
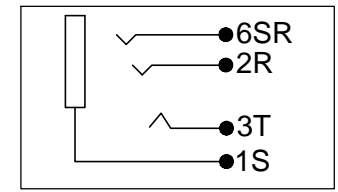


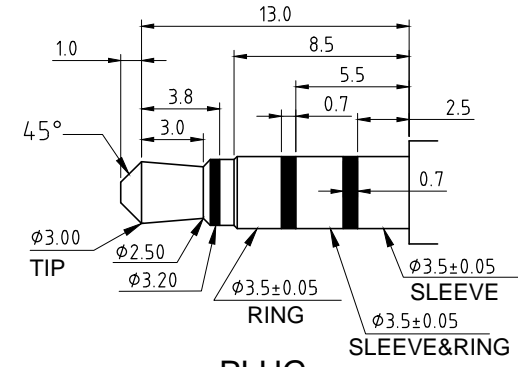
ISS.	AMEND	DATE
1	1st DRAWN	30/09/11
2	AMEND	30/01/13
3	BORDER	29/01/15



SCHEMATIC



**P.C.B LAYOUT
BOTTOM VIEW**



**PLUG
(SCALE 1:2)**

Description	Qty	Material	Finish
SLEEVE	1	BRASS	Ag
TIP	1	PHOSPHOR BRONZE	Ag
TIP	1	BRASS	Ag
RING	1	BRASS	Ag
HOUSING	1	PBT	BLACK

RoHS
COMPLIANT

TOLERANCE
 NO DEC. PLACE ± 0.50
 1 DEC. PLACE ± 0.30
 2 DEC. PLACE ± 0.15
 HOLE Ø ± 0.10
 ANGLES ± 1°
 UNLESS OTHERWISE STATED

DO NOT SCALE

Cliff Electronic Components Ltd.
 76 Holmehorpe Avenue, Holmehorpe Industrial Estate,
 Redhill, Surrey, RH1 2PF, England, UK
 Tel: 01737-771375 Fax: 01737-766012 Website: www.cliffuk.co.uk

DIMENSIONS IN MILLIMETERS UNLESS OTHERWISE STATED. WORK TO DIMENSIONS. REMOVE ALL BURRS. IF IN DOUBT ASK.

3rd ANGLE PROJECTION:

MATERIAL: SEE TABLE

TITLE: 3.5mm 4 POLE JACK SOCKET

FINISH: SEE TABLE

DRWG. No. **FC68125**

FORM: A4DRWG

THE CONTENTS OF THIS DOCUMENT MUST NOT BE COPIED OR DISCLOSED TO A 3rd PARTY WITHOUT WRITTEN PERMISSION OF CLIFF UK. © 2011

DRAWN: T.J.O.

APPROVED: D.P.J.

Cliff Electronic Components Ltd.

76 Holmethorpe Avenue, Holmethorpe Industrial Estate,
Redhill, Surrey, RH1 2PF, England, UK
Tel: 01737-771375 Fax: 01737-766012 Website: www.cliffuk.co.uk

PART NUMBER: FC68125
DESCRIPTION: 3.5mm 4 POLE JACK SOCKET

A) SCOPE 適用範圍 (使用系列產品料號:)

This specification covers " 3.5Ø PHONE JACK " 3.5 Ø 插座

B) CHARACTERISTICS 性能

Standard atmospheric specified, measurements shall be made at temperature , humidity and air pressure within the following limit :

Ambient temperature	:	5 °C	to	35 °C
Relative humidity	:	45 %	to	85 %
Air pressure	:	85 Kpa	to	106 Kpa

標準狀態 : 沒有特別指定時,測試是在常溫、常濕、常壓下進行:

Operating temperature range	:	-20 °C	to	60 °C
Storage temperature range	:	-25 °C	to	70 °C

C) ELECTRICAL CHARACTERISTICS 電氣性能 .

ITEM	TEST CONDITIONS	SPECIFICATION
(C1)Rated Voltage Rated Current		DC 16V 20mA~0.3A
(C2)Insulation Resistance	A voltage of 500V DC shall be applied to the terminals. After which measurement shall be made. DC 500V	100M Ω or more ≥ 100M Ω

Cliff Electronic Components Ltd.

76 Holmethorpe Avenue, Holmethorpe Industrial Estate,
Redhill, Surrey, RH1 2PF, England, UK
Tel: 01737-771375 Fax: 01737-766012 Website: www.cliffuk.co.uk

ITEM	TEST CONDITIONS	SPECIFICATION
(C3)Contact Resistance	Measurement shall be made at 1 K Hz with 100 mA or less (With the test plug as show in item G) <1>Initial before any testing a · Pin to contact or (T-TS, R-RS) (N.C.). b · Plug shield to socket or (T,R,S,) (N.O.). <2>After life test with mating plug a · Pin to contact or (T-TS, R-RS) (N.C.). b · Plug shield to socket or (T,R,S,) (N.O.).	Initial : a · 30mΩ or Less ≤ 30mΩ b · 50mΩ or Less ≤ 50mΩ After life : a · 60mΩ or Less ≤ 60mΩ b · 100mΩ or Less ≤ 100mΩ
(C4)Dielectric Strength	Withstand 0.5 mA (Trip current) 500V AC(50 or 60 Hz) between any open terminal for 1 minute. (Open terminal: Between each terminal which should not make contact , before plug insert to socket R-T,R-S, after plug insert	Without distinct Damage

Cliff Electronic Components Ltd.

76 Holmethorpe Avenue, Holmethorpe Industrial Estate,
Redhill, Surrey, RH1 2PF, England, UK
Tel: 01737-771375 Fax: 01737-766012 Website: www.cliffuk.co.uk

	to socket R-RS, T-TS,)	
--	------------------------------	--

D) . MECHANICAL CHARACTERISTICS

ITEM	TEST CONDITIONS	SPECIFICATION
(D1) Insertion force and Withdrawal force	Initial (With the test plug as show in item G)	Insertion force 0.3kgf ~ 3kgf
		Withdrawal force 0.3kgf ~ 3kgf
	After life test (With the test plug as show in item G)	Insertion force 0.2kgf ~ 2kgf
		Withdrawal force 0.2kgf ~ 2kgf
(D2) Terminal strength	Terminals must withstand a 500g minimum pull for 10 seconds before movement or break from housing occurs , but deformation of terminal is authorized .	

E) . ENDURANCE CHARACTERISTICS

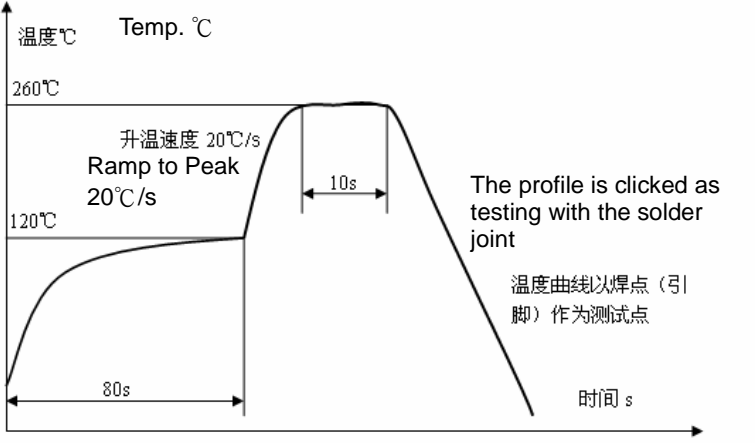
ITEM	TEST CONDITIONS
(E1) Life test	The life test shall consist of 5,000 cycles of insertion and withdrawal with test plug(Show in item G), at a rate of 20 to 30 cycles per minute under no load .

Cliff Electronic Components Ltd.

76 Holmethorpe Avenue, Holmethorpe Industrial Estate,
 Redhill, Surrey, RH1 2PF, England, UK
 Tel: 01737-771375 Fax: 01737-766012 Website: www.cliffuk.co.uk

(E2)Soldering test	The terminal of JACK tested shall be dipped into soldering flux or equivalent for 5 ~ 10 seconds and then immersed into molten solder Sn at $260 \pm 5^{\circ}\text{C}$ for 3 ± 0.5 seconds , the coverage should more than 95% .
(E3)Soldering heat	The terminal for a printed circuit board . Temperature of solder : $260 \pm 5^{\circ}\text{C}$ Dip time : 5 ± 1 seconds .
(E4) Hand Soldering Temperature	Temperature of solder : $350 \pm 10^{\circ}\text{C}$ Dip time : 3 ± 0.5 seconds .

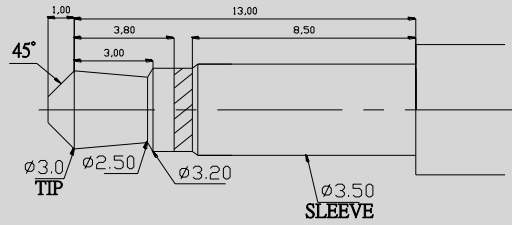
F) . DIP

ITEM	TEST CONDITIONS
The temperature peak without lead.	 <p>Pre-heating temperature is 25 ~ 120°C ,for a duration about 80 seconds.</p> <p>The peak temperature is 260°C , the duration for 10 seconds.</p>

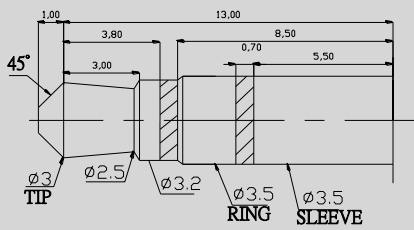
Cliff Electronic Components Ltd.

76 Holmethorpe Avenue, Holmethorpe Industrial Estate,
Redhill, Surrey, RH1 2PF, England, UK
Tel: 01737-771375 Fax: 01737-766012 Website: www.cliffuk.co.uk

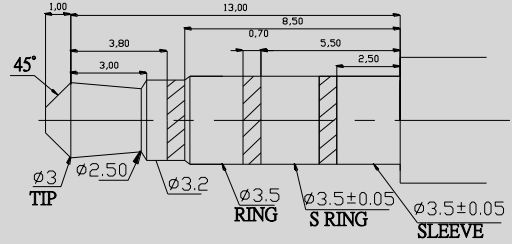
G) . MATED PLUG



MONO PLUG



STEREO PLUG



4P PLUG

制定日期	A	C	M
2008.10.13	P	H	A
	V	K	K
	D	D	E
	Jacky	Dragon	Roy