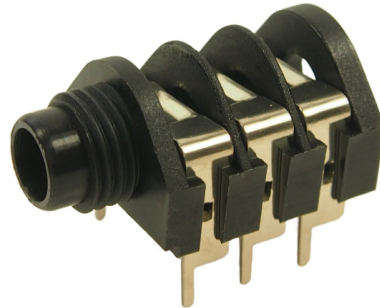




S2/BNB Solder Tag



S2/BBB/PC-A Special Nose



S2/BBB/PC-C Kinked



S2/BNB/PC-D

The **CLIFF**[®] range of S2 Jack Sockets incorporates our Ni-Ag[®] Alloy Self-Cleaning Contacts for superior performance and reliability. All models have a durable premium quality nylon body. Mounting hardware is normally supplied unassembled. The S2 Jack Socket is available with optional chassis grounding in mono and stereo with unswitched, switched or make contacts and with a choice of either solder tag or six standard PCB mounting versions.

Significant features include:

- Ni-Ag[®] Alloy Self-Cleaning Contacts for superior performance and reliability.
- Optional 'Kinked' legs for snap-in PCB mounting on PC-A and PC-C styles to facilitate pre-assembly and wave soldering.
- Tough, moulded Nylon body. Standard colour black.
- Optional chassis grounding versions.
- Optional plated contacts.
- Optional EMI/RFI screen.

Cliff Electronic Components, Ltd.

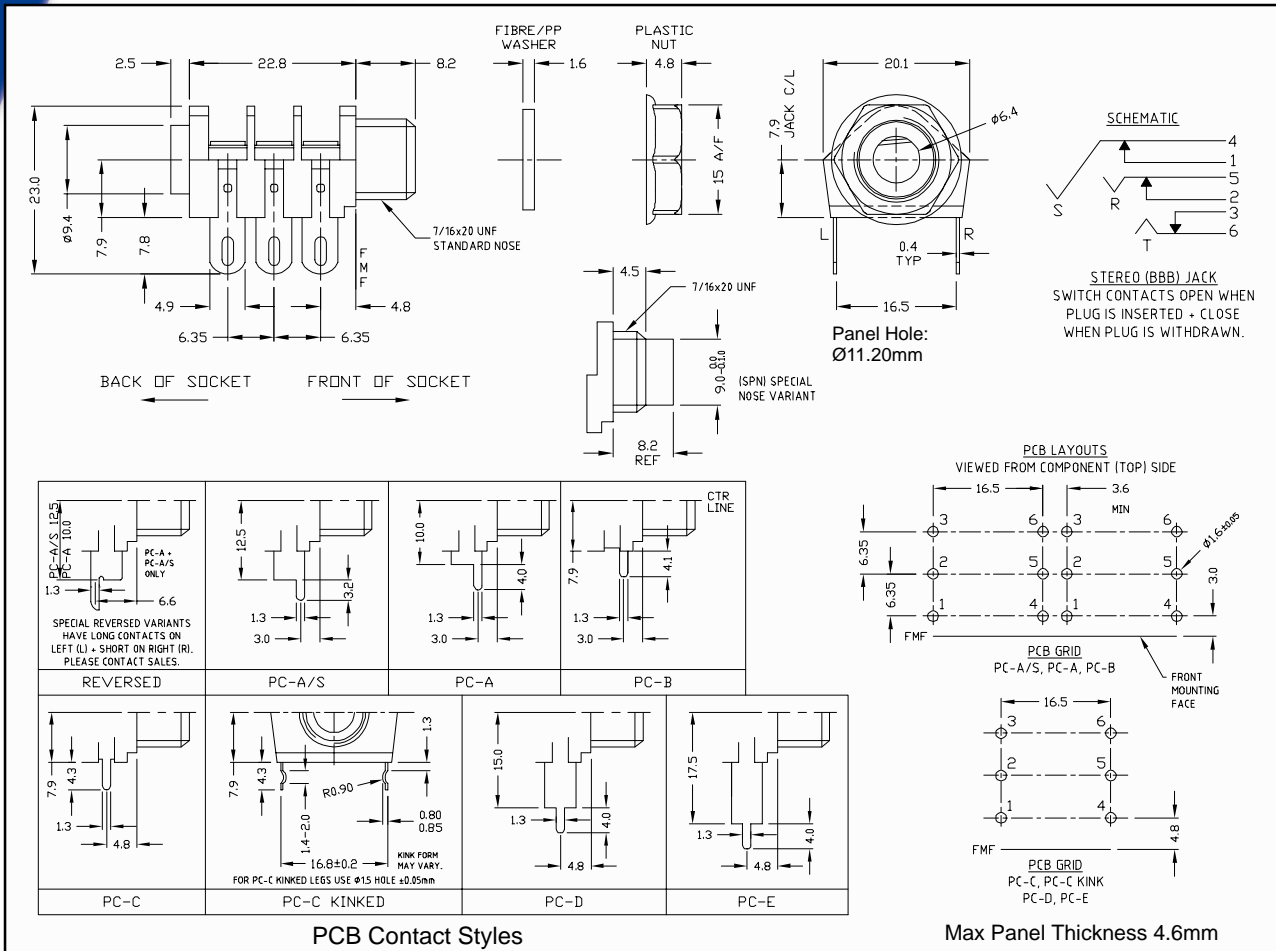
76 Holmethorpe Avenue, Holmethorpe Ind. Est.

Redhill, Surrey RH1 2PF. England

Tel: +44 (0) 1737 771375

Fax: +44 (0) 1737 766012

Email: sales@cliffuk.co.uk



Specification:

Withstand Voltage: 2000V DC Min
Maximum Current: 5 amps
Temperature Rating: -10°C to +70°C
Life (Minimum): 10,000+ Operations
Nominal Contact Resistance: <50m Ω

Technical Data:

Designed to receive both mono and stereo 1/4" jack plugs, the S2 socket is produced from grade 1 black nylon and is supplied with a black hexagonal mounting nut (standard), or optional nickel plated brass hexagonal nut or slotted ring nut. Coloured nuts are also available for identification purposes.

Contacts can be supplied with our special low noise Ni-Ag[®] Tin or Gold plating, and in addition to the standard solder tag version, there are six different PCB mounting styles available. The S2 can also be supplied with prefitted EMI/RFI screen if required.

When ordering, please state the contact arrangement required, with a plug inserted, from the front of the jack socket, using the following codes.

B - Break, M - Make, S - Single, N - No contact.

For example, S2/BMB/PC-C is a 3-pole stereo jack socket, 1st contact - Break, 2nd contact - Make and 3rd contact - Break with PC-C style contacts.



S2 Coloured Nut



S2 Hex Chrome Nut



Slotted Ring Nut



S2 EMI/RFI Screen