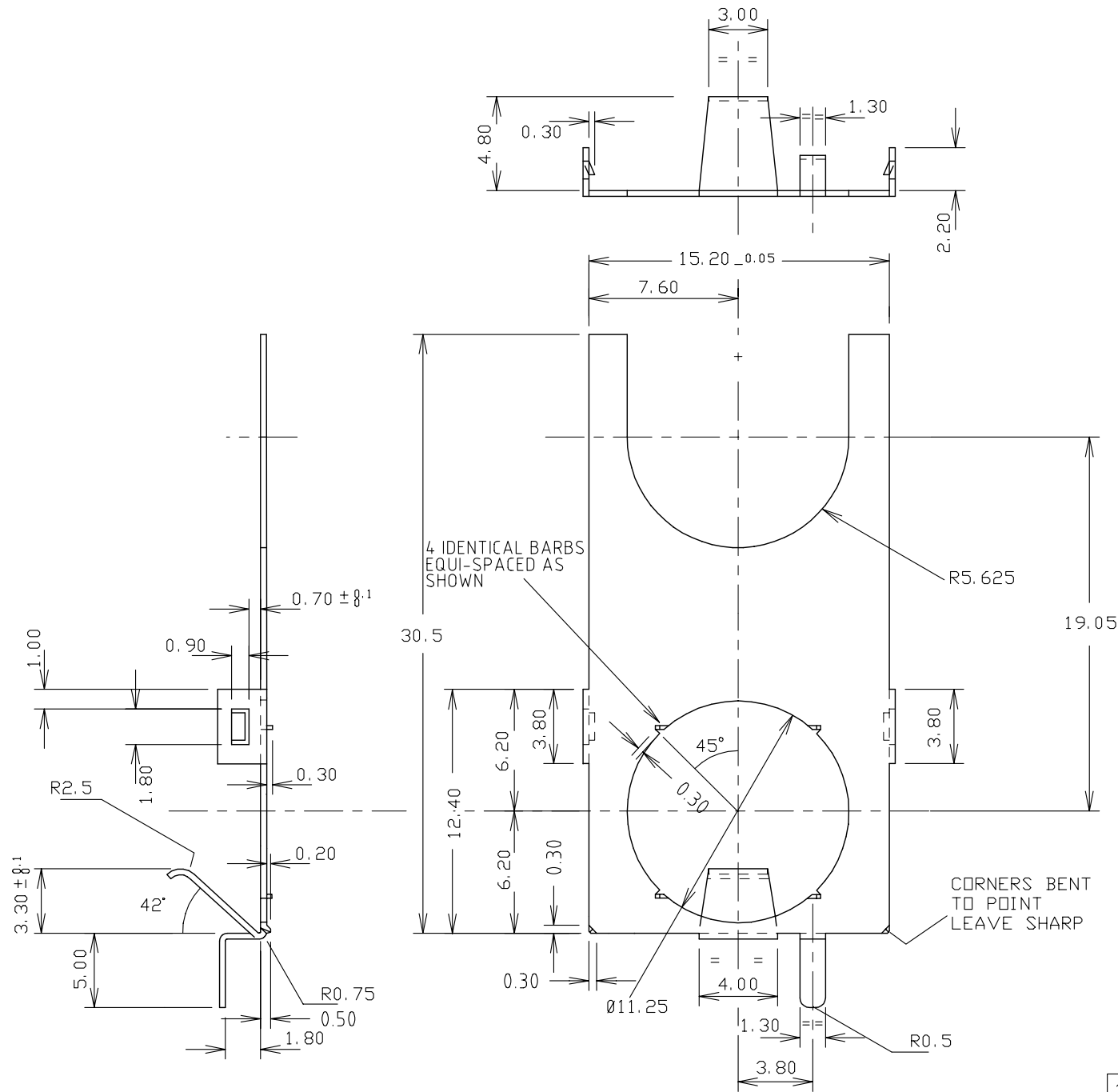


ISS.	AMEND	DATE
1	WAS 157J-11C	30/5/97
2	WAS CL14426	6/3/01



Tolerance	
NO DEC. PLACE	±
1 DEC. PLACE	±
2 DEC. PLACE	± 0.1
DIA. HOLES	± 0.1
ANGLES ± 1/2°	
UNLESS OTHERWISE STATED	

DIMENSIONS IN MILLIMETERS UNLESS OTHERWISE STATED. WORK TO DIMENSIONS. DO NOT SCALE DRAWING. 3rd ANGLE PROJECTION. REMOVE BURRS. IF IN DOUBT ASK.

1ST DRAWN : 21/4/95

WHERE USED F.R.
SCALE N.T.S.

Cliff Electronic Components Limited
76 Holmethorpe Ave., Holmethorpe Ind. Estate,
Redhill, Surrey. RH1 2PF. England.
Tel: 01737-771375 Fax: 01737-766012

MATERIAL HARD BRASS TO BS2870 CZ108.H 0.3mm +0.05 -0 THK
FINISH TIN PLATED
DRAWN C.A.M.J. APPD. RWT

TITLE EARTHING WASHER FOR S1/SH JACK

DRWG. No. **FCR 14426**

FORM: A4DRWGH