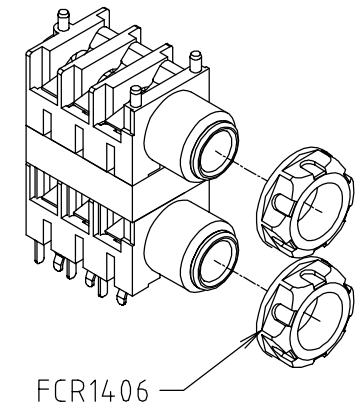
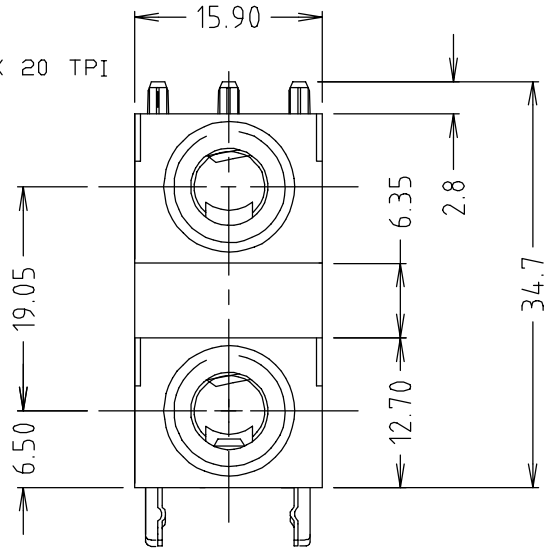
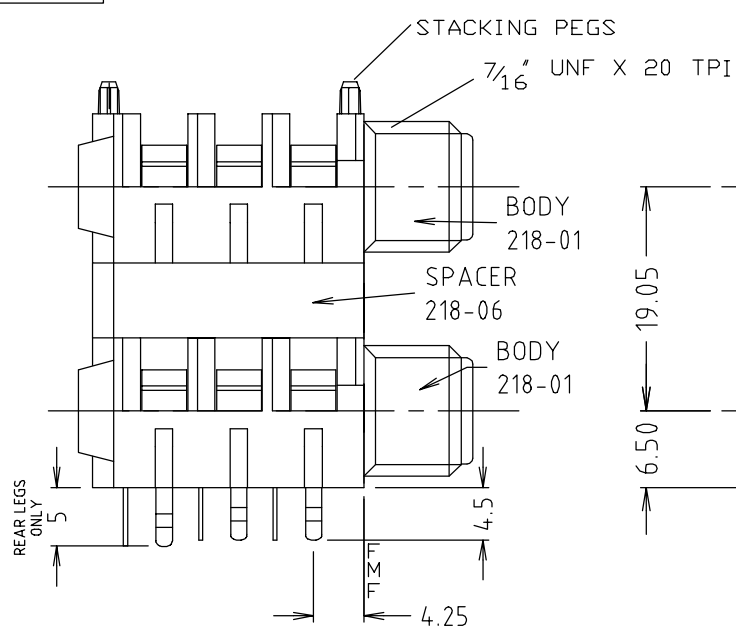
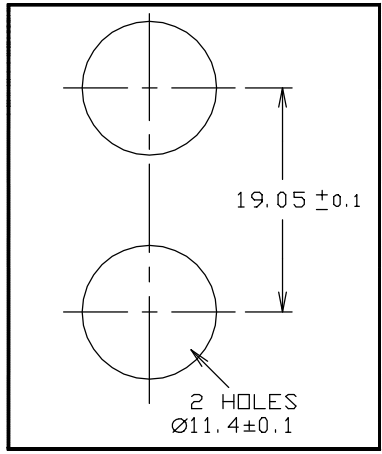
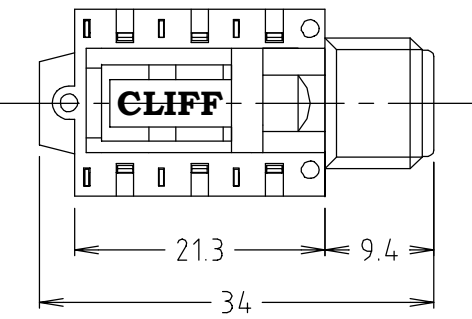


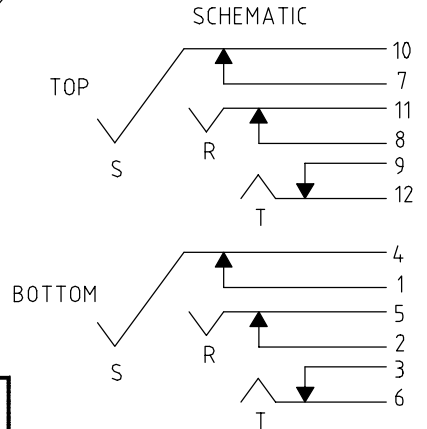
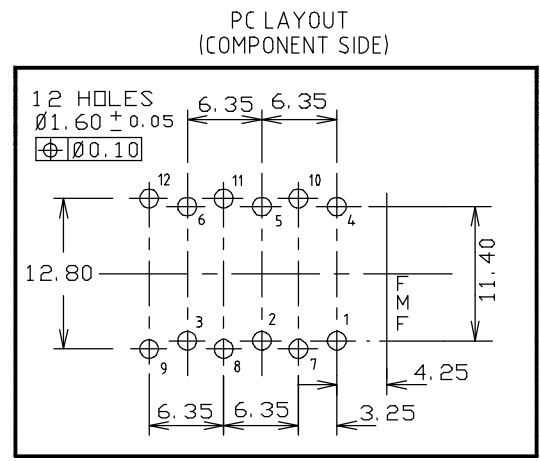
ISS.	AMEND	DATE
1	1st DRAWN	18/12/01
2	SCHEMATIC ADDED	15/02/02
3	NUT P/No ADDED	07/05/04
4	9+12 PIN REVERSED	01/04/11
5	OVERALL HEIGHT ERR	24/07/12
6	DIMS AMENDED	22/09/15



FCR1406



PANEL CUTOUT
DETAIL



SWITCH CONTACTS OPEN WHEN
PLUG IS INSERTED, CLOSE WHEN
PLUG IS WITHDRAWN.

NOTE

- A) NUTS SUPPLIED UNASSEMBLED BULK PACKED
- B) SUPPLIED WITHOUT WASHERS.
- C) TRAY PACKING 100 / TRAY



TOLERANCE

NO DEC. PLACE ± 0.50
 1 DEC. PLACE ± 0.20
 2 DEC. PLACE ± 0.10
 HOLE Ø ± 0.10
 ANGLES ± 1/2°
 UNLESS OTHERWISE STATED

Cliff Electronic Components Ltd. 76 Holmehorpe Avenue, Holmehorpe Industrial Estate, Redhill, Surrey, RH1 2PF, England, UK Tel: 01737-771375 Fax: 01737-766012 Website: www.cliffuk.co.uk	DIMENSIONS IN MILLIMETERS UNLESS OTHERWISE STATED. WORK TO DIMENSIONS. REMOVE ALL BURRS. IF IN DOUBT ASK.		3rd ANGLE PROJECTION:	DO NOT SCALE
	MATERIAL: COMPOSITE	TITLE: STACKJACK S1C/SH/BBBx2/WN		
FINISH: CLEAN	DRAWN: C.A.M.J.	APPROVED: R.W.T.	DRWG. No. FCR1124	FORM: A4DRWGH