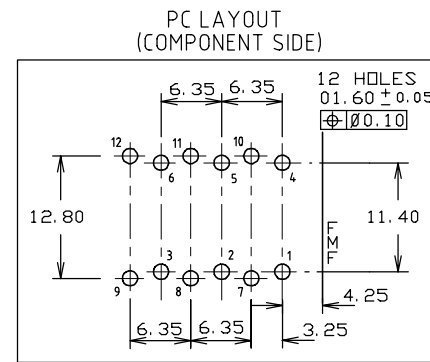
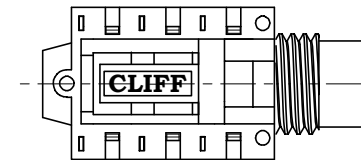
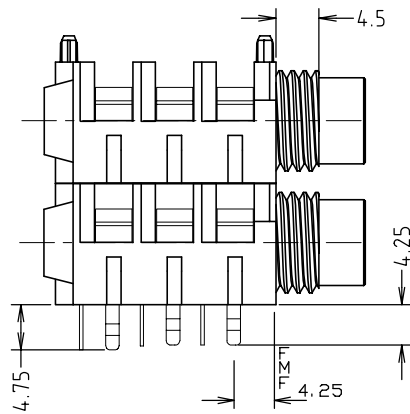
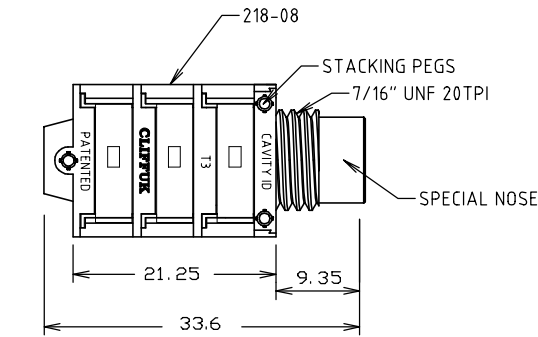
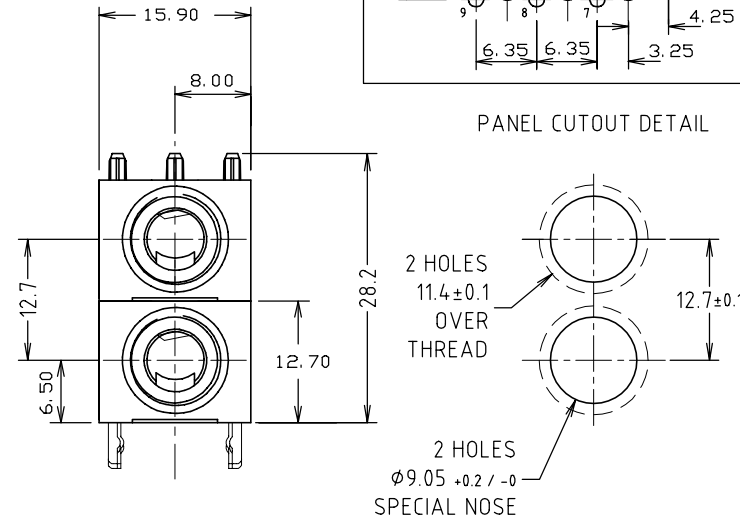


NEW TOOL 4

- 1) ADDITIONAL JACK PLUG SUPPORT
- 2) TYPE 2 CONTACTS
- 3) SPECIAL NOSE THREAD LENGTH 5.0mm
- 4) PATENT NUMBER WILL BE ON PACKAGING
- 5) CAVITY ID NEXT TO CLIFF LOGO.



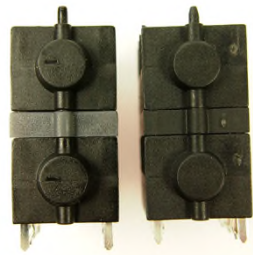
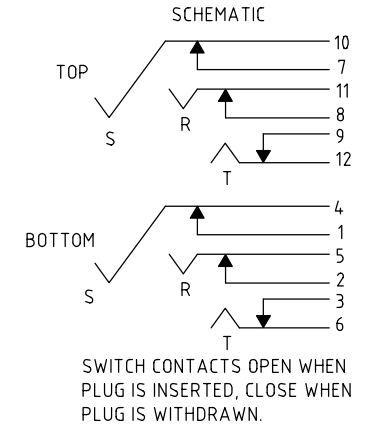
PANEL CUTOUT DETAIL



NOTE:
 DUPLICATE TOOLING MAY BE USED FOR THIS JACK SOCKET.
 TOOL 3 AS SHOWN, T3 ID ON MOULDINGS
 TOOL 4 (NEW) - SEE IMAGES AND NOTES.
 NO NUTS OR WASHERS ARE SUPPLIED WITH THIS MODEL.

IMAGES ARE OF FCR1126L - SPACER IS NOT USED ON FCR1117.

| ISS. | AMEND | DATE |
|------|-------------------|----------|
| 1 | 1st DRAWN | 05/03/04 |
| 2 | AMENDED | 13/07/04 |
| 3 | 4th TOOL INFO ADD | 21/02/13 |



RoHS
 COMPLIANT

TOLERANCE
 NO DEC. PLACE ± 1.00
 1 DEC. PLACE ± 0.50
 2 DEC. PLACE ± 0.10
 HOLE Ø ± 0.10
 ANGLES ± 1/2°
 UNLESS OTHERWISE STATED

Cliff Electronic Components Ltd.

76 Holmetherpe Avenue, Holmetherpe Industrial Estate,
 Redhill, Surrey, RH1 2PF, England, UK
 Tel: 01737-771375 Fax: 01737-766012 Website: www.cliffuk.co.uk

THE CONTENTS OF THIS DOCUMENT MUST NOT BE COPIED OR DISCLOSED TO A 3rd PARTY WITHOUT WRITTEN PERMISSION OF CLIFF UK. © 2004

DIMENSIONS IN MILLIMETERS UNLESS OTHERWISE STATED. WORK TO DIMENSIONS. REMOVE ALL BURRS. IF IN DOUBT ASK.

3rd ANGLE PROJECTION:

DO NOT SCALE

MATERIAL: COMPOSITE

TITLE: JACK SOCKET S1C/S/BBB2/SPN/NNW

FINISH: CLEAN

DRWG. No. FCR1117

DRAWN: C.A.M.J.

APPROVED: R.W.T.

FORM: A4DRWGH