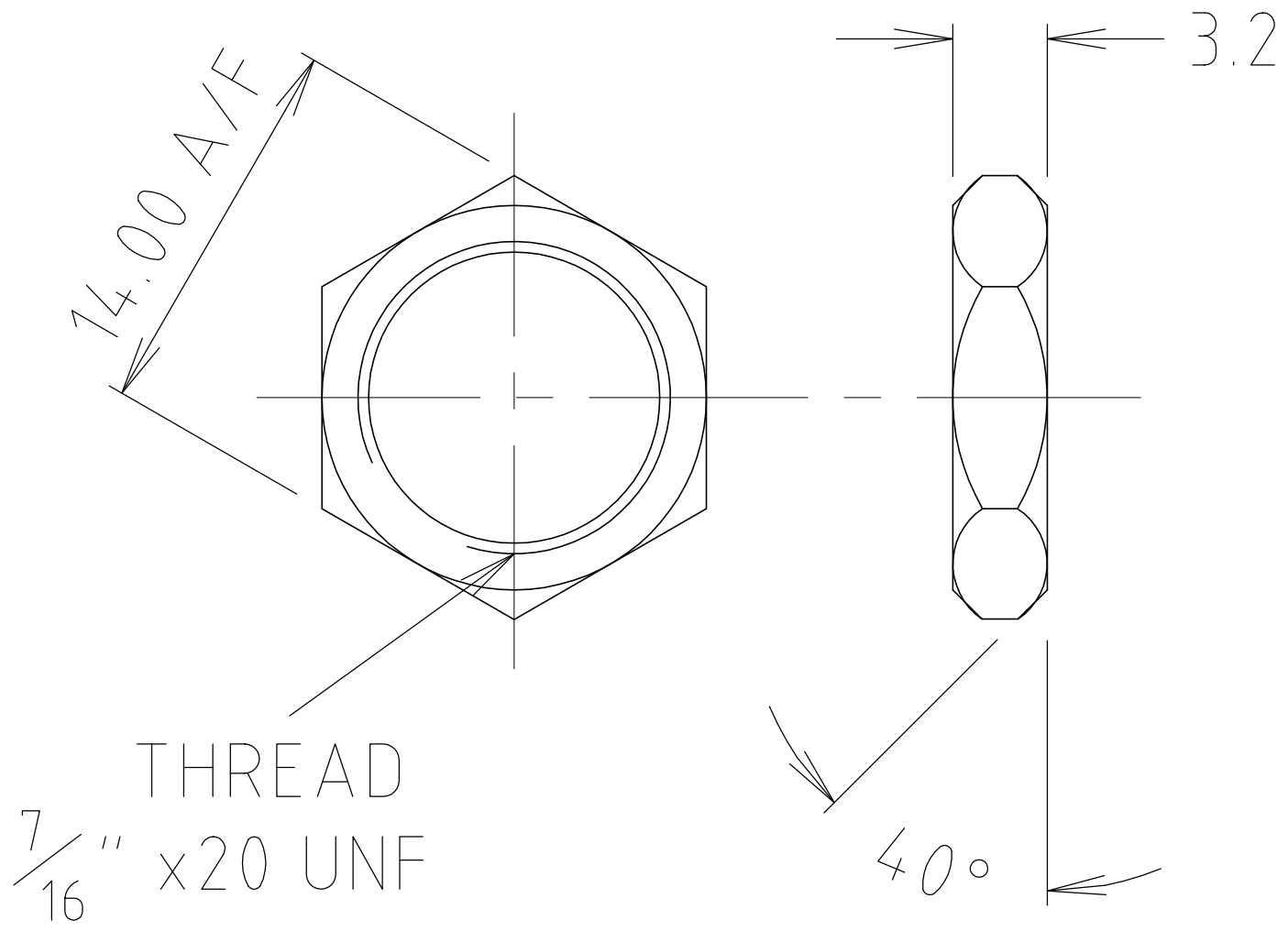


| ISS. | AMEND | DATE |
|------|-----------|----------|
| 1 | 1st DRAWN | 23/01/13 |



| |
|---|
| RoHS ✓ COMPLIANT |
| TOLERANCE NO DEC. PLACE ± 0.50 1 DEC. PLACE ± 0.20 2 DEC. PLACE ± 0.10 HOLE Ø ± 0.10 ANGLES ± 1/2° UNLESS OTHERWISE STATED |

| | | | | |
|---|---|--|-------------------------|---------------|
| Cliff Electronic Components Ltd. 76 Holmethorpe Avenue, Holmethorpe Industrial Estate, Redhill, Surrey, RH1 2PF, England, UK Tel: 01737-771375 Fax: 01737-766012 Website: www.cliffuk.co.uk | DIMENSIONS IN MILLIMETERS UNLESS OTHERWISE STATED. WORK TO DIMENSIONS. REMOVE ALL BURRS. IF IN DOUBT ASK. | | 3rd ANGLE PROJECTION: | DO NOT SCALE |
| | MATERIAL: STEEL FINISH: NICKEL PLATED | TITLE: HEX PLATED NUT FOR 1/4" JACKS (MACHINED TYPE) | | |
| THE CONTENTS OF THIS DOCUMENT MUST NOT BE COPIED OR DISCLOSED TO A 3rd PARTY WITHOUT WRITTEN PERMISSION OF CLIFF UK. © 2013 | DRAWN: T.J.O. | APPROVED: D.P.J. | DRWG. No. FC1440 | FORM: A4DRWGH |