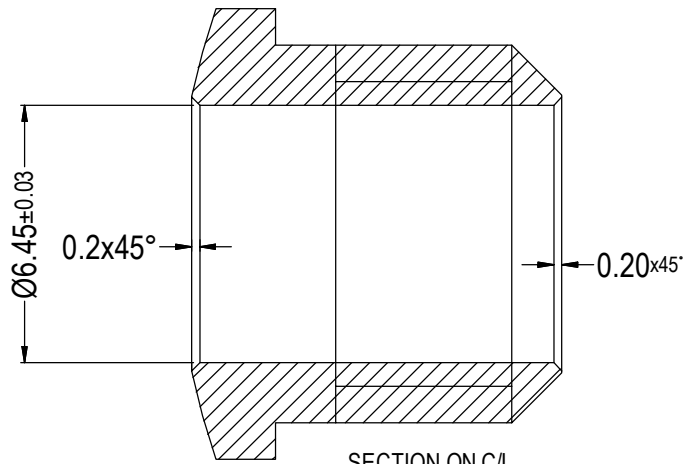
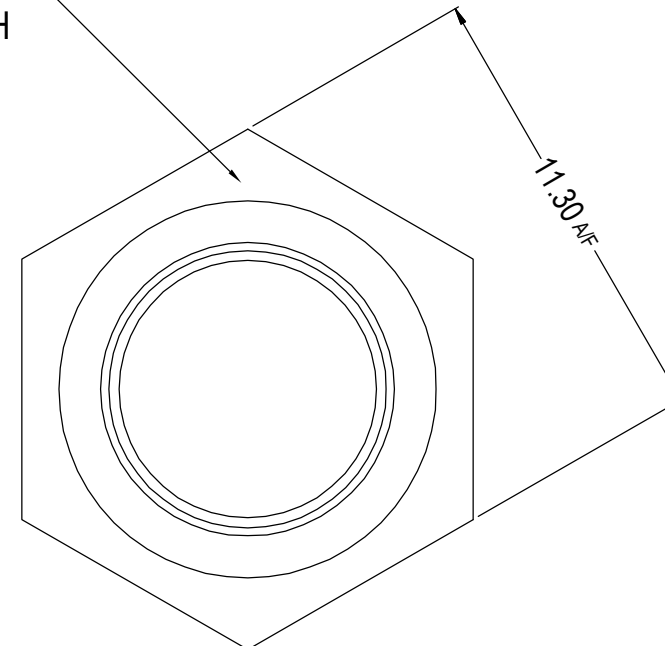
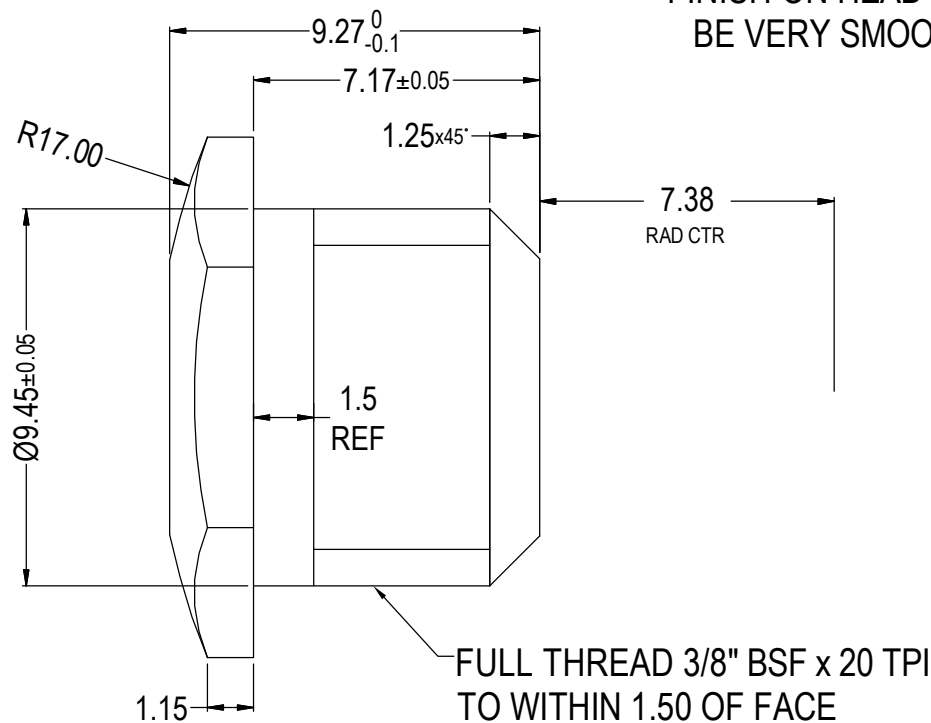


ISS.	AMEND	DATE
1	ISSUED	21/09/16



NOTE AS CL1421 EXCEPT:

- a) 1.27mm LONGER (1x EXTRA PITCH 0.050" OF THREAD)
- b) NICKEL PLATED



RoHS COMPLIANT
TOLERANCE
NO DEC. PLACE ± 0.50
1 DEC. PLACE ± 0.20
2 DEC. PLACE ± 0.10
HOLE Ø ± 0.10
ANGLES ± 1/2°
UNLESS OTHERWISE STATED

Cliff Electronic Components Ltd.

76 Holmethorpe Avenue, Holmethorpe Industrial Estate,
Redhill, Surrey, RH1 2PF, England, UK
Tel: 01737-771375 Fax: 01737-766012 Website: www.cliffuk.co.uk

THE CONTENTS OF THIS DOCUMENT MUST NOT BE COPIED OR DISCLOSED TO A 3rd PARTY WITHOUT WRITTEN PERMISSION OF CLIFF UK. © 2015

DIMENSIONS IN MILLIMETERS UNLESS OTHERWISE STATED. WORK TO DIMENSIONS. REMOVE ALL BURRS. IF IN DOUBT ASK.

3rd ANGLE PROJECTION:

DO NOT SCALE

MATERIAL: 11.30mm A/F HEX F.C. BRASS

TITLE: EXTENDED S4 NUT

FINISH: NICKEL PLATE

DRWG. No. CL1421N

DRAWN: T.J.O.

APPROVED: D.P.J.

FORM: A4DRWGH