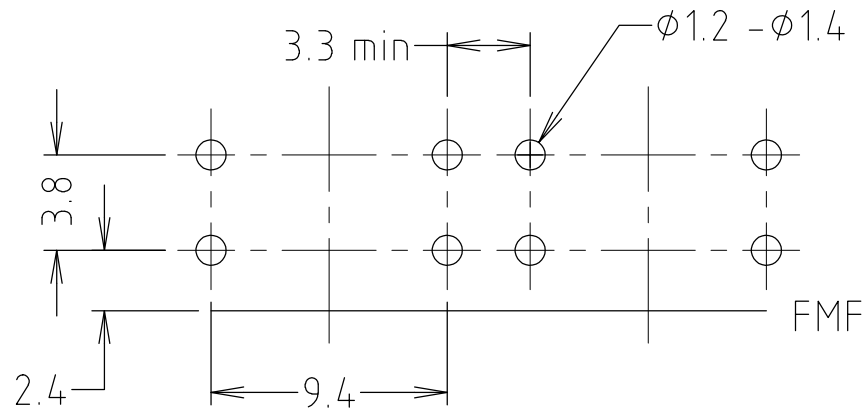
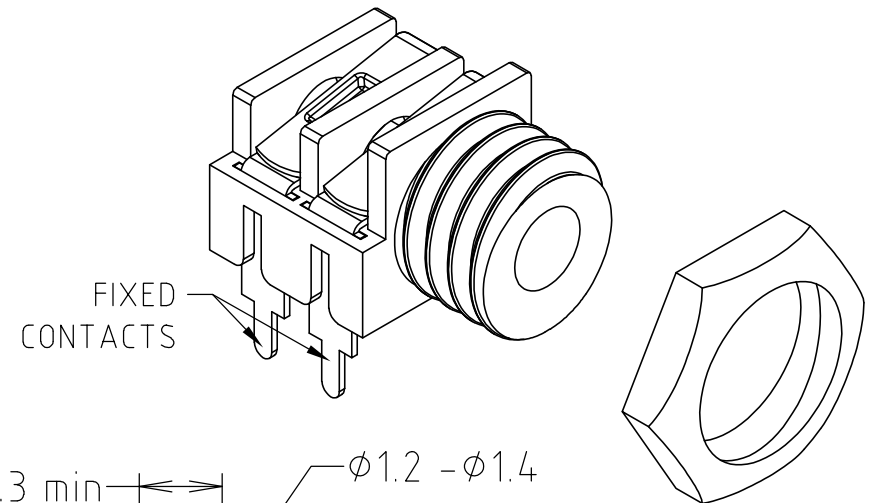
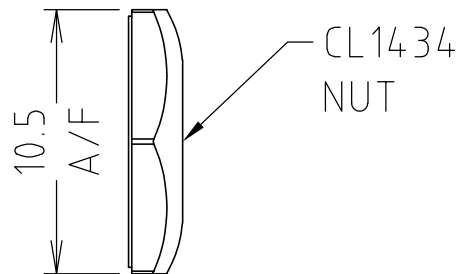
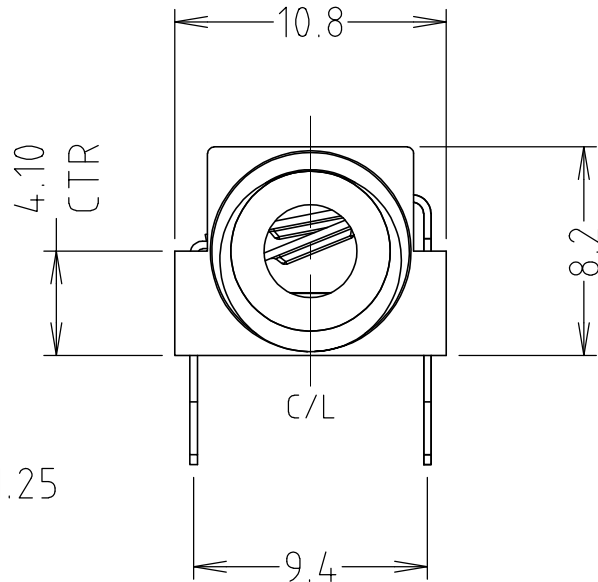
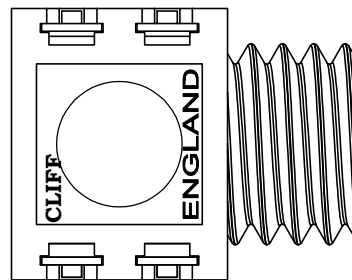
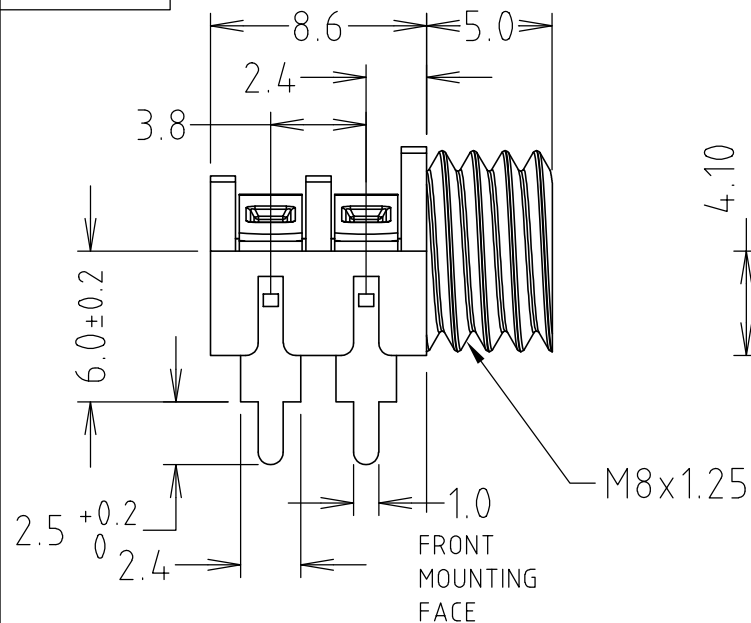


**CLIFF**

PART No.	COLOUR
CL1384A	GREY
CL1384G	GREEN
CL1384L	BLUE
CL1384P	OPAL
CL1384R	RED
CL1384W	WHITE
CL1384Y	YELLOW

ISS.	AMEND	DATE
1	ISSUED	20/11/19

**NOTES:**

1. S6 SOCKETS ARE ONLY GUARANTEED TO PERFORM THE SWITCH SWITCH (SS) FUNCTION.
2. USERS REQUIRING BREAK (B) FUNCTIONS MUST SATISFY THEMSELVES THAT THE PRODUCT IS SUITABLE FOR THEIR APPLICATIONS.
3. CLIFF ACCEPTS NO RESPONSIBILITY FOR USE OUTSIDE THE (SS) FUNCTION.
4. MAXIMUM PANEL THICKNESS 3.0mm
5. 1x NUT PER JACK SUPPLIED UNASSEMBLED.
6. MATERIAL: JACK PC (COLOUR SEE TABLE)
7. MATERIAL: CONTACTS NICKEL SILVER - TIN PLATED
8. MATERIAL: NUT BRASS - NICKEL PLATED

**RoHS**  
✓COMPLIANT

**TOLERANCE**  
 NO DEC. PLACE ±  
 1 DEC. PLACE ±  
 2 DEC. PLACE ±  
 HOLE Ø ±  
 ANGLES ±  
 UNLESS  
 OTHERWISE STATED

**Cliff Electronic Components Ltd.**

76 Holmesthorpe Avenue, Holmesthorpe Industrial Estate,  
 Redhill, Surrey, RH1 2PF, England, UK  
 Tel: 01737-771375 Fax: 01737-766012 Website: www.cliffuk.co.uk

THE CONTENTS OF THIS DOCUMENT MUST NOT BE COPIED OR DISCLOSED  
 TO A 3rd PARTY WITHOUT WRITTEN PERMISSION OF CLIFF UK. © 2019

DIMENSIONS IN MILLIMETERS UNLESS OTHERWISE STATED. WORK TO DIMENSIONS. REMOVE ALL BURRS. IF IN DOUBT ASK.

MATERIAL: SEE NOTES + TABLE

FINISH: SEE NOTES + TABLE

DRAWN: T.J.O.

APPROVED: D.P.J.

3rd ANGLE PROJECTION:

TITLE: COLOURED S6/BB/6.0mm PCB + NUT

DRWG. No. **CL1384**

DO NOT SCALE

FORM: A4DRWGH