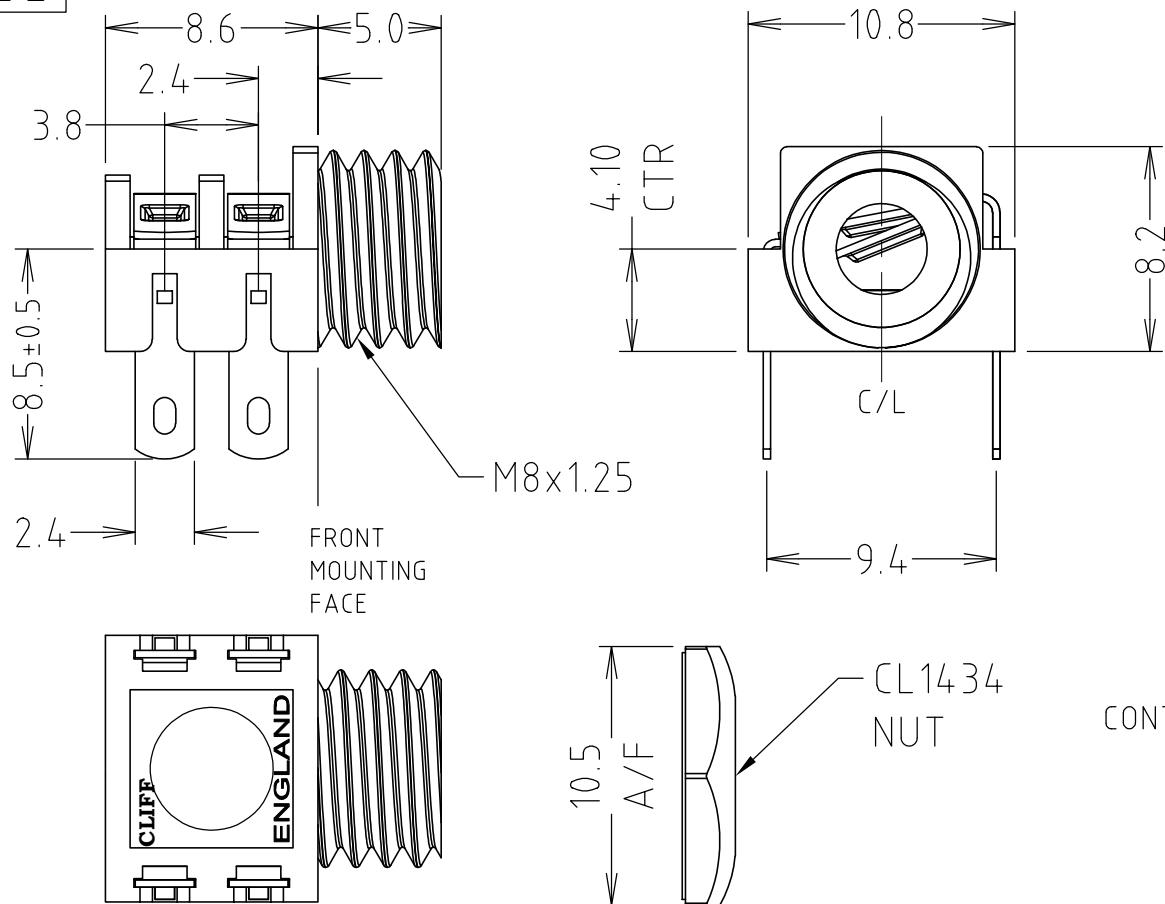
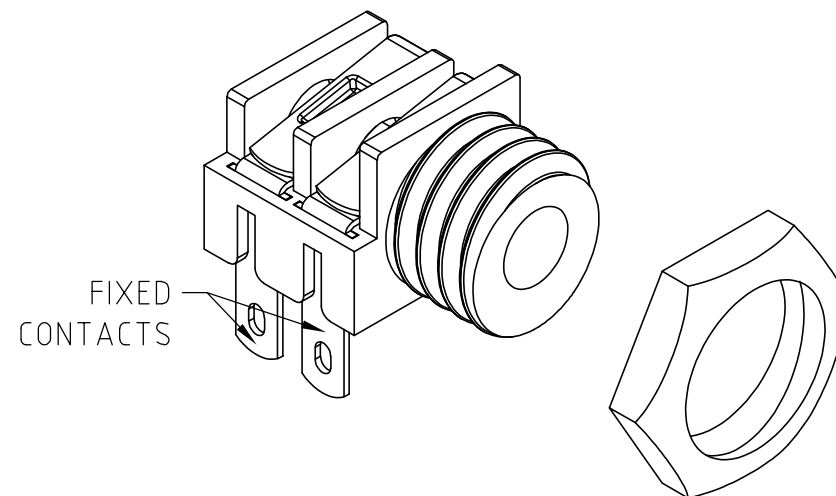


CLIFF

PART No.	COLOUR
CL1382A	GREY
CL1382G	GREEN
CL1382L	BLUE
CL1382P	OPAL
CL1382R	RED
CL1382W	WHITE
CL1382Y	YELLOW

**NOTES:**

1. S6 SOCKETS ARE ONLY GUARANTEED TO PERFORM THE SWITCH SWITCH (SS) FUNCTION.
2. USERS REQUIRING BREAK (B) FUNCTIONS MUST SATISFY THEMSELVES THAT THE PRODUCT IS SUITABLE FOR THEIR APPLICATIONS.
3. CLIFF ACCEPTS NO RESPONSIBILITY FOR USE OUTSIDE THE (SS) FUNCTION.
4. MAXIMUM PANEL THICKNESS 3.0mm
5. 1x NUT PER JACK SUPPLIED UNASSEMBLED.
6. MATERIAL: JACK PC (COLOUR SEE TABLE)
7. MATERIAL: CONTACTS NICKEL SILVER - TIN PLATED
8. MATERIAL: NUT BRASS - NICKEL PLATED

RoHS
✓ **COMPLIANT****TOLERANCE**

NO DEC. PLACE ±
1 DEC. PLACE ±
2 DEC. PLACE ±
HOLE Ø ±
ANGLES ±
UNLESS
OTHERWISE STATED

DO NOT SCALE

Cliff Electronic Components Ltd.

76 Holmethorpe Avenue, Holmethorpe Industrial Estate,
Redhill, Surrey, RH1 2PF, England, UK
Tel: 01737-771375 Fax: 01737-766012 Website: www.cliffuk.co.uk

THE CONTENTS OF THIS DOCUMENT MUST NOT BE COPIED OR DISCLOSED
TO A 3rd PARTY WITHOUT WRITTEN PERMISSION OF CLIFF UK. © 2019

DIMENSIONS IN MILLIMETERS UNLESS OTHERWISE STATED. WORK TO DIMENSIONS. REMOVE ALL BURRS. IF IN DOUBT ASK.

MATERIAL: SEE NOTES + TABLE

FINISH: SEE NOTES + TABLE

DRAWN: T.J.O.

APPROVED: D.P.J.

3rd ANGLE PROJECTION:



TITLE: COLOURED S6/BB/SOLDER TAG + NUT

DRWG. No. **CL1382**

FORM: A4DRWGH