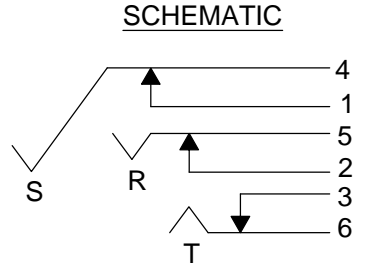
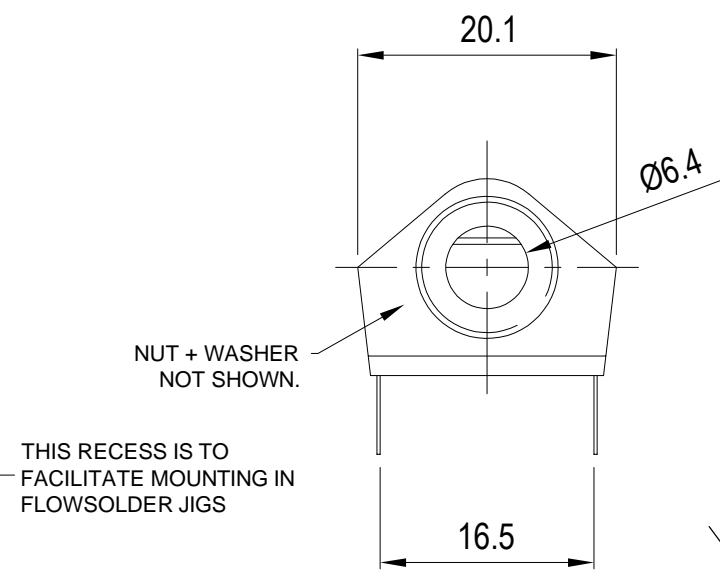
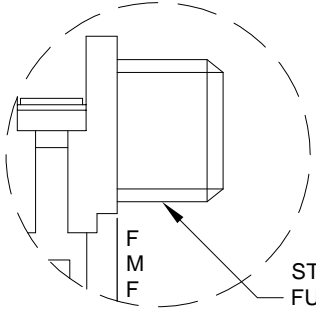
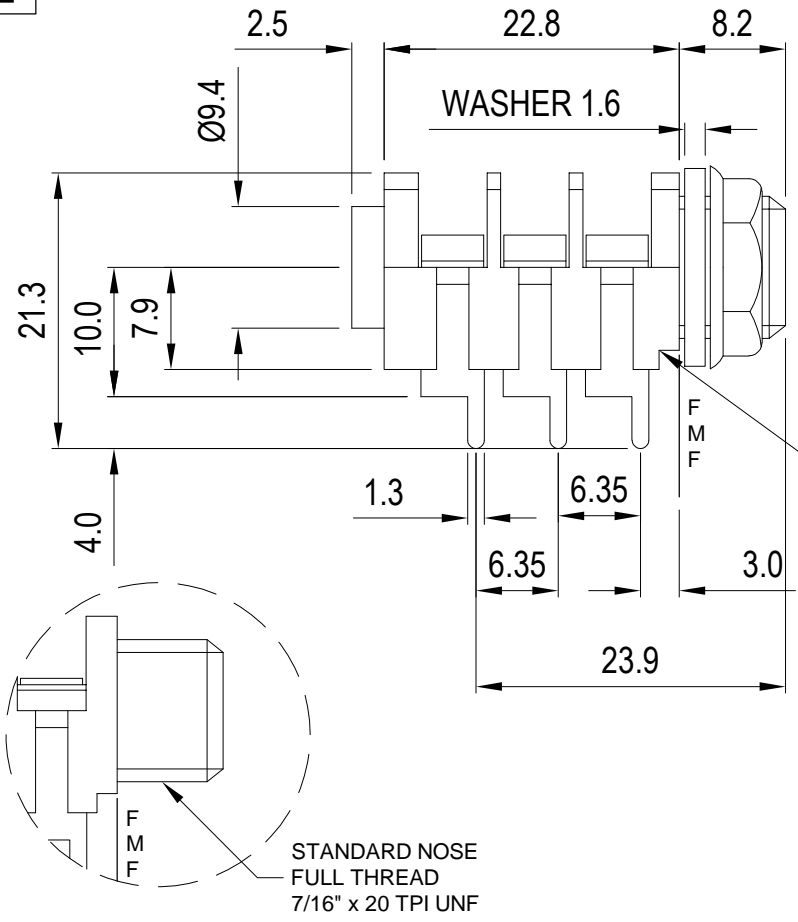
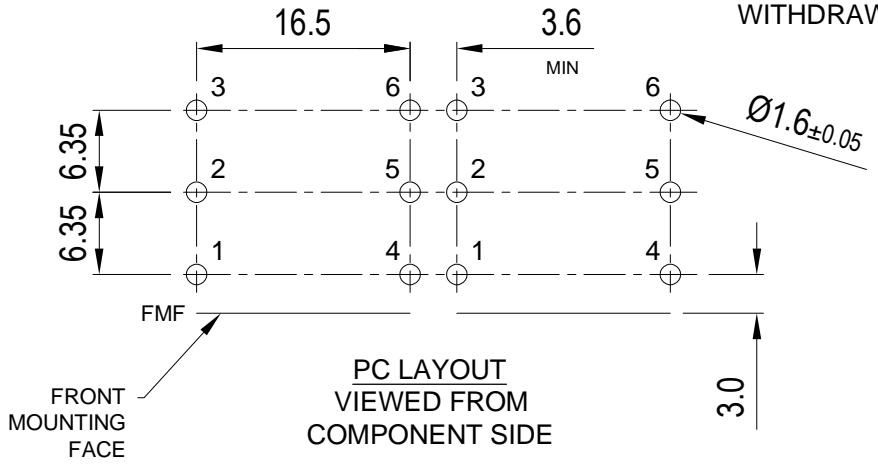


ISS.	AMEND	DATE
1	ISSUED	25/09/14
2	PCB DIMENSIONS	24/11/25



SWITCH CONTACTS OPEN WHEN PLUG IS INSERTED, CLOSE WHEN PLUG IS WITHDRAWN.



**NOTES**

- Maximum panel thickness 4.6mm.
- Supplied with nut + fibre washer assembled.

**SPECIFICATION**

Withstand voltage:	2000V DC Min.
Maximum Current:	5 amps
Temperature Rating:	-10° C to +70° C
Life (Minimum):	10,000+ Operations
Nominal Contact Resistance:	<50mΩ

<b>RoHS</b> COMPLIANT
<b>TOLERANCE</b>
NO DEC. PLACE ±
1 DEC. PLACE ±
2 DEC. PLACE ±
HOLE Ø ±
ANGLES ±
UNLESS OTHERWISE STATED

**Cliff Electronic Components Ltd.**  
76 Holmehorpe Avenue, Holmehorpe Industrial Estate,  
Redhill, Surrey, RH1 2PF, England, UK  
Tel: 01737-771375 Fax: 01737-766012 Website: www.cliffuk.co.uk

DIMENSIONS IN MILLIMETERS UNLESS OTHERWISE STATED. WORK TO DIMENSIONS. REMOVE ALL BURRS. IF IN DOUBT ASK.  
MATERIAL: NYLON / NiAg / FIBRE  
FINISH: AS MOULDED / MICROFINISH  
DRAWN: TJO

1st DRAWN: 11/01/1991  
3rd ANGLE PROJECTION:  
TITLE: S2/BBB/PCA JACK SOCKET - ASSEMBLED  
DRWG. No. **CL1232A**

DO NOT SCALE  
APPROVED: DPJ  
FORM: A4DRWGH