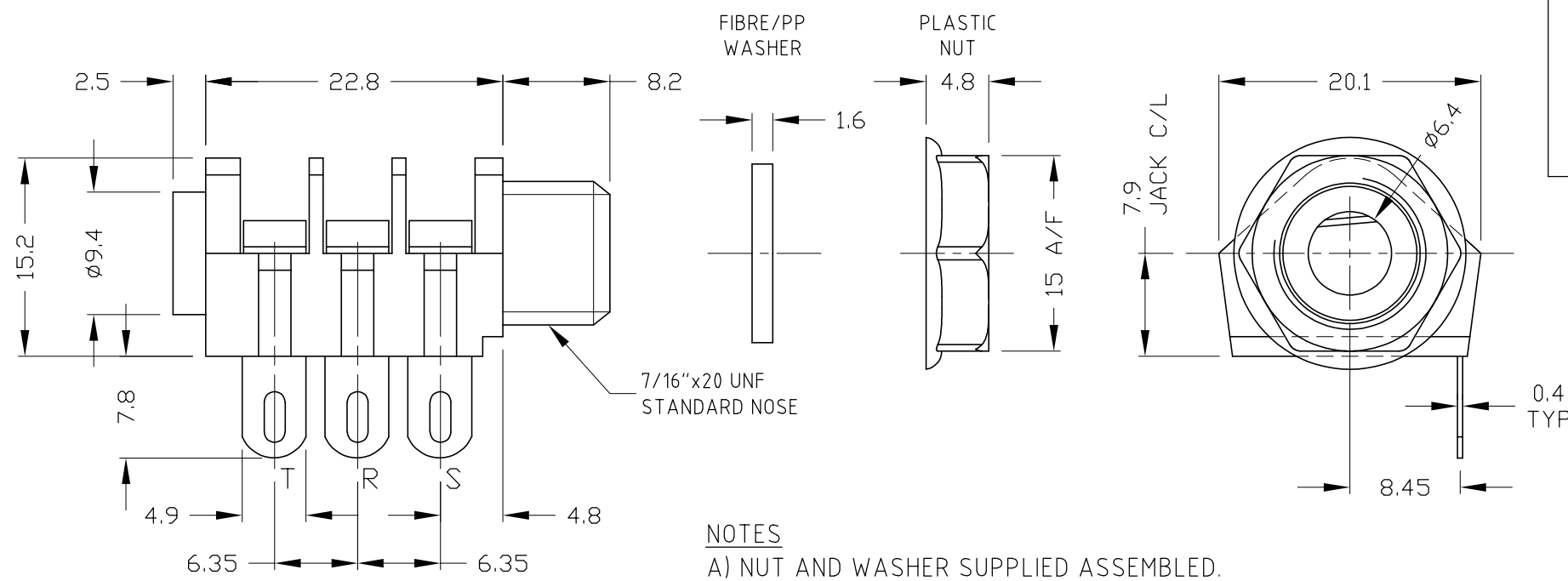
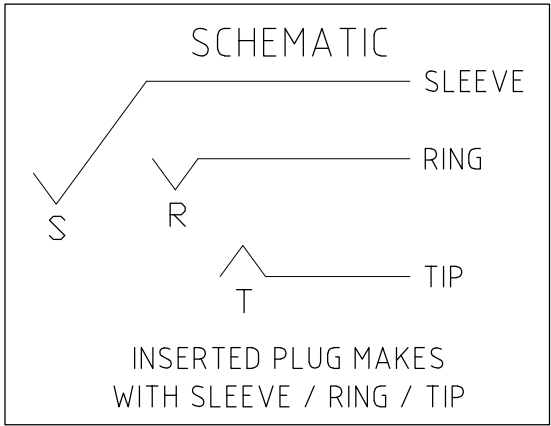


ISS.	AMEND	DATE
1	ISSUED	28/11/25




NOTES
A) NUT AND WASHER SUPPLIED ASSEMBLED.
B) MAX PANEL THICKNESS 4.6mm



SPECIFICATION
Withstand Voltage: 2000V DC Min.
Maximum Current: 5A
Temperature Rating: -10° C to +70° C
Life (Minimum): >10,000
Nominal Contact Resistance: <50mΩ



RoHS COMPLIANT
TOLERANCE NO DEC. PLACE ± 1 DEC. PLACE ± 2 DEC. PLACE ± HOLE Ø ± ANGLES ± UNLESS OTHERWISE STATED
DO NOT SCALE

Cliff Electronic Components Ltd. 76 Holmethorpe Avenue, Holmethorpe Industrial Estate, Redhill, Surrey, RH1 2PF, England, UK Tel: 01737-771375 Fax: 01737-766012 Website: www.cliffuk.co.uk	DIMENSIONS IN MILLIMETERS UNLESS OTHERWISE STATED. WORK TO DIMENSIONS. REMOVE ALL BURRS. IF IN DOUBT ASK.		3rd ANGLE PROJECTION: 		DO NOT SCALE		
	MATERIAL: NYLON / NiAg / FIBRE / PP		TITLE: S2 / SSS SOLDER TAG - ASSEMBLED				
	FINISH: AS MOULDED - BLACK / MICROFINISH						
THE CONTENTS OF THIS DOCUMENT MUST NOT BE COPIED OR DISCLOSED TO A 3rd PARTY WITHOUT WRITTEN PERMISSION OF CLIFF UK. © 1991	DRAWN: T.J.O.		APPROVED: D.P.J.		DRWG. No. CL1200		FORM: A4DRWGH