

# CLIFF

## MS Series Unfused Power Connectors



MS1-S



MS1SY



MS1-A



MS2-A



MS1X/S



MS1-PCA



MR1-S



MR1-SBN



PVC Insulating Cover

The **CLIFF**<sup>®</sup> range of MS series Power connectors are produced from heat resistant plastic with solid brass nickel-plated metal parts. Parts for soldering are tin plated. Three terminal options are available - Solder Tag, Quick Connect and PC mounting. All products are produced in accordance to IEC320 / EN60-320 and have various safety approvals. The standard colour is Black, however some products are available in other colours, subject to a reasonable order quantity.

### Cliff Electronic Components, Ltd.

76 Holmethorpe Avenue, Holmethorpe Ind. Est.

Redhill, Surrey RH1 2PF. England

Tel: +44 (0) 1737 771375

Fax: +44 (0) 1737 766012

Email: sales@cliffuk.co.uk

Visit us online at:

[www.cliffuk.co.uk](http://www.cliffuk.co.uk)

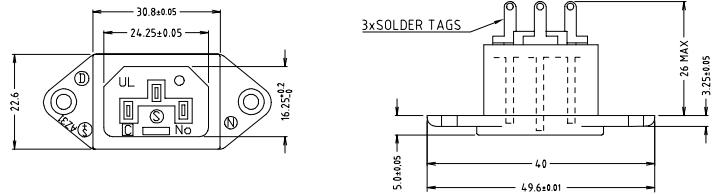
# CLIFF

## MS Series Unfused Power Connectors



**MS1-S IEC Power Input Socket. Rated 10A / 250VAC (USA 15A / 250VAC). Approved CB1 for all EC countries.**

**MS1-S (CL1920)  
MS1S-Y (CL1920Y)**

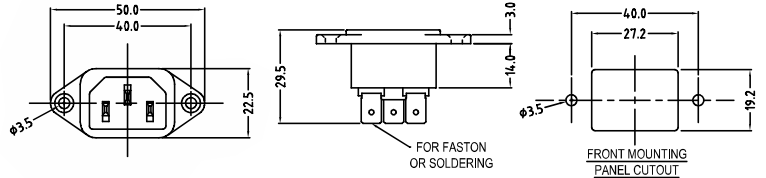


Y version has Rounded Locking Face.



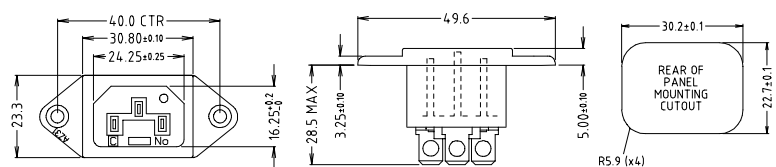
**MS1SY Power Input Socket. Rated 10A 250 VAC (USA 15A / 250VAC). Approved UL, S, D, N, FI, CCC, VDE**

**MS1SY (CL1920RB1)**



**MS1-A IEC Power Input Socket. Rated 10A / 250VAC. (USA 15A / 250VAC). Approved CB1 for all EC countries.**

**MS1-A (CL1922)  
MS1A/Y (CL1922Y1)**

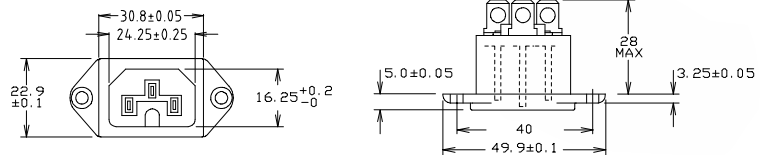


Y1 version has rounded front face and CSK holes



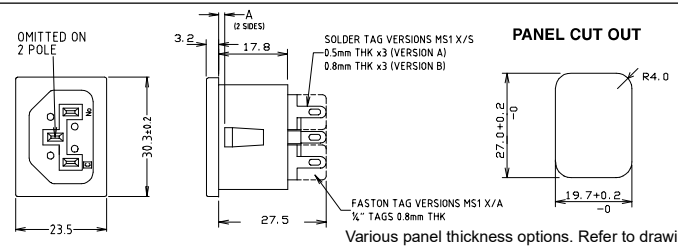
**MS2-A IEC Power Input Socket 'Hot Condition'. Rated 10A / 250VAC.**

**MS2-S (CL1924)  
MS2-A (CL1926)  
Amp Tags**



**MS1X/S Snap In IEC Power Input Socket. Rated 10A / 250VAC. Approved CB1 for all EC countries.**

**MS1X/S (CL19192)**

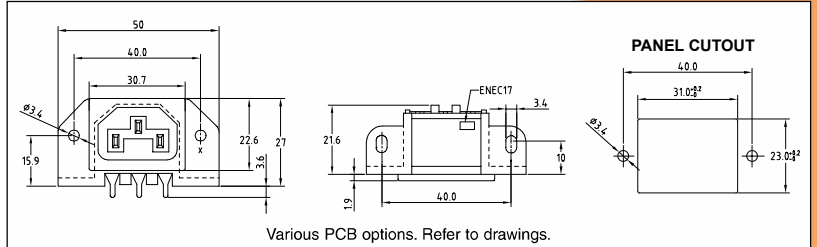


Drawings available on request



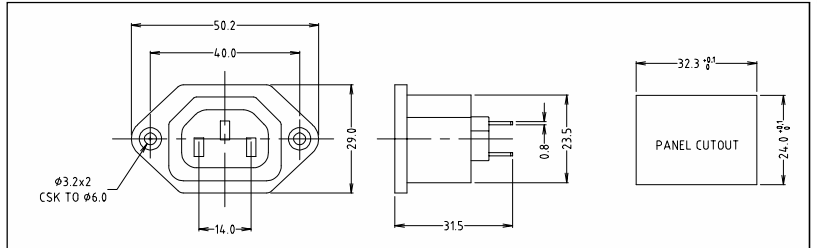
**MS1-PCA PCB Mounting IEC Power Input Socket. Rated 10A / 250VAC. Refer to drawing for PCB layouts & variants. Approved CB1**

**MS1-PCA (CL19210)**



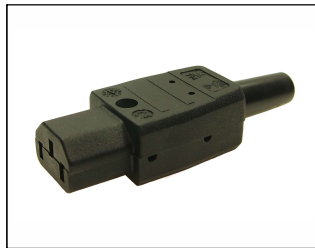
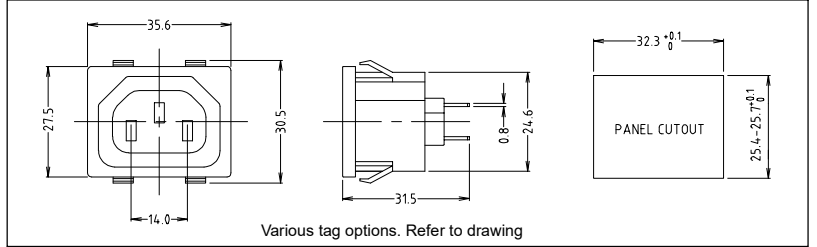
**MR1-S IEC Power Output Socket. Rated 6A / 250VAC.**

**MR1-S (FC68138)**



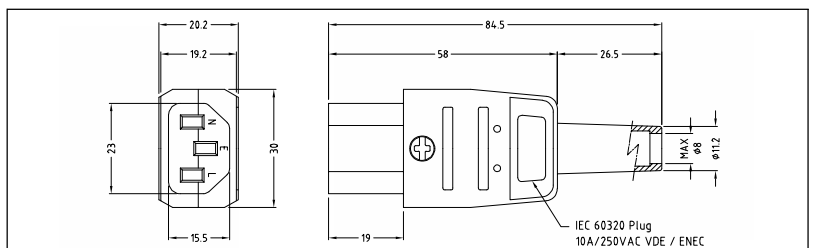
**MR1-SBN Snap In IEC Power Output Socket. Rated 6A / 250VAC.**

**MR1-SBN (FC68139N)**



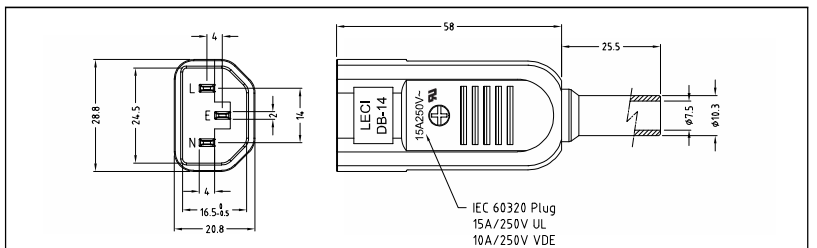
**CP22S IEC Power Rewireable Output Connector. Rated 10A / 250VAC.**

**CP22S (CL1918)**



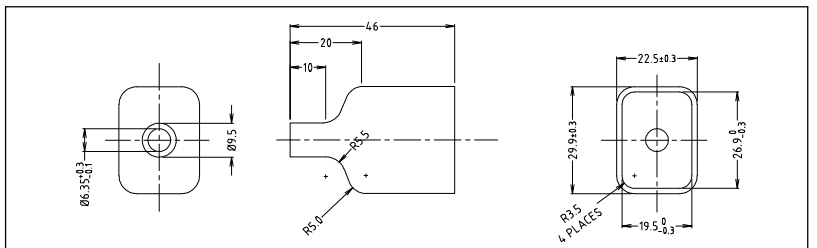
**CP22R IEC Power Rewireable Input Connector. Rated 10A / 250VAC.**

**CP22R (CL1919)**



**PVC Insulating Cover for Chassis Mounting MS1 and MS2 Power Inputs and MR1-S Power Output.**

**PVC Cover (CL1928)**



## Approvals

TYPE \ SPEC	BS4491 COLD	BS4491 HOT	CE22 IEC320	CB-1
	MSIS/MS1A	O	N	O
MS1XS/XA	O	N	O	●
MS1-PCA/PCB	O	N	O	●
MS2S/MS2A	O	O	O	O
MR1S	N	N	N	N
MR1SB	N	N	O	N
CP22S	O	N	O	N
CP22R	N	N	O	N

N: Not approved      o: Conforms      ●: Approved

## Specification:

**Rated Current:** 10A maximum. (15A USA)

**Rated Voltage:** 250Vac max.

**Temperature Rating:** -10°C to +85°C

**Minimum Flammability Rating:** UL 94-HB

## Materials:

**Housing:** MS1 Polyamide UL 94HB or UL94V-0

MS2 PBT UL 94 V-0

MR1-S GFN UL 94V-0

**Contacts:** Brass, Niag, Alloy, Tin plated contacts for best solderability

## Technical Data:

Most component parts are rated at 10A 250VAC (USA 15A 250VAC) and conform to relevant specifications EN60065, EN60-320, IEC 127, VDE 0820. Please contact our sales office for copies of CB1 approval certificate.