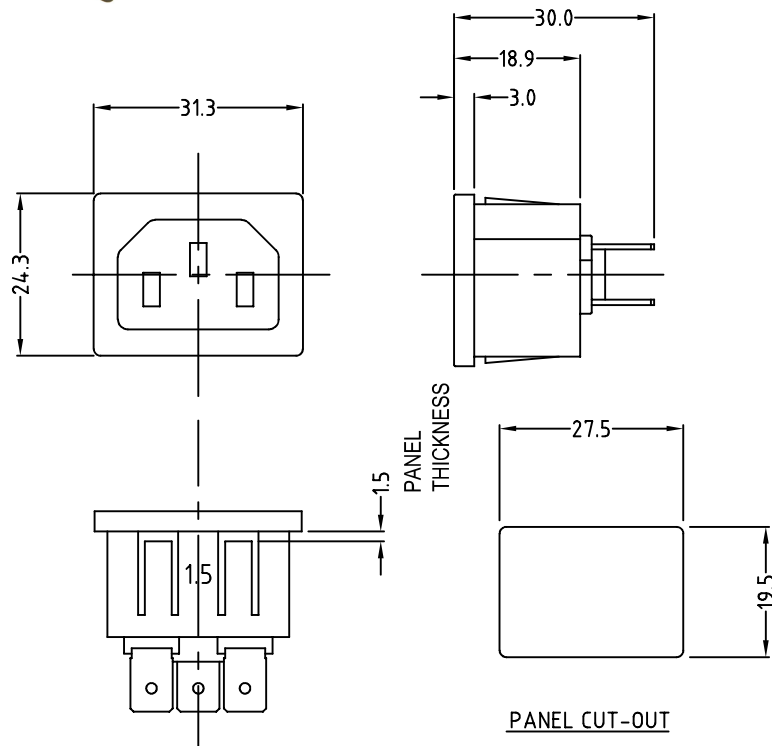


CLIFF

MS1X INLET SOCKET

Mains inlet socket, snap-in. For panel thickness 1.5mm max. 6.35mm Faston tags.



PART No. **CL19192RB**

STANDARD:	IEC 60320 C14
APPROVED:	UL, S, D, N, FI, CCC, VDE
RATED:	10A 250V AC / 15A 250V AC
INSULATION RESISTANCE:	100MΩ 500V DC / 1 minute.
DIELECTRIC STRENGTH:	2000V AC / 1 minute.