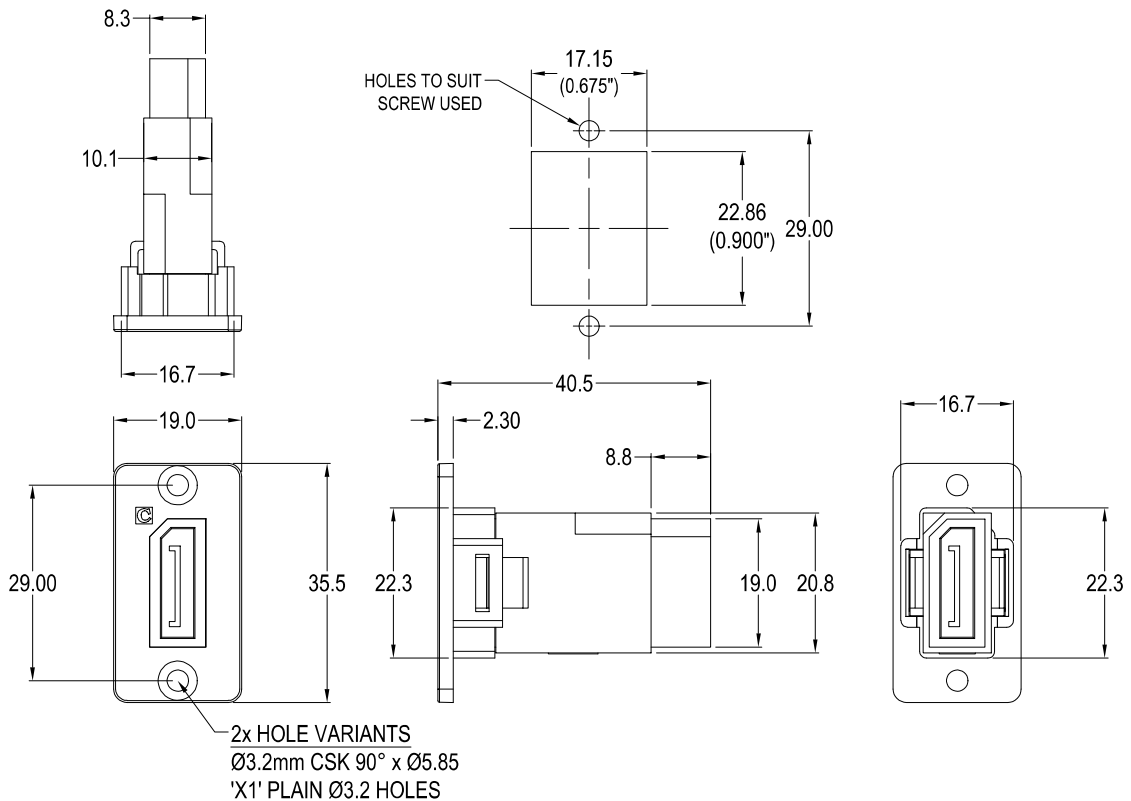




SLIM DISPLAYPORT FRONT MOUNTING FEEDTHROUGH CONNECTOR



VARIANTS

Part No.

CP30633

SLIM FM DisplayPort Black plastic frame, CSK holes

CP30633X1

SLIM FM DisplayPort Black plastic frame, Ø3.2 PLAIN holes

Feedthrough Features

- Fits standard rectangular cutout.
- Various hole mounting options.
- No soldering or punch termination. Use standard cable for each connector style.
- Low rear profile.

General:

Please note: Functionality is affected by cable quality, length and cable wiring configuration.

DisplayPort 8K 60Hz

Materials:

1. DP Overmould Centre: ABS UL94 V-0 Black
2. DP Overmould Ends: PBT UL94 V-0 Black
3. DP Connector: LCP UL94 V-0 Black
4. DP Shell: Iron Nickel Plated
5. DP Contacts: Copper Gold Plated
6. FT Frame: ABS UL94 V-0 Black

