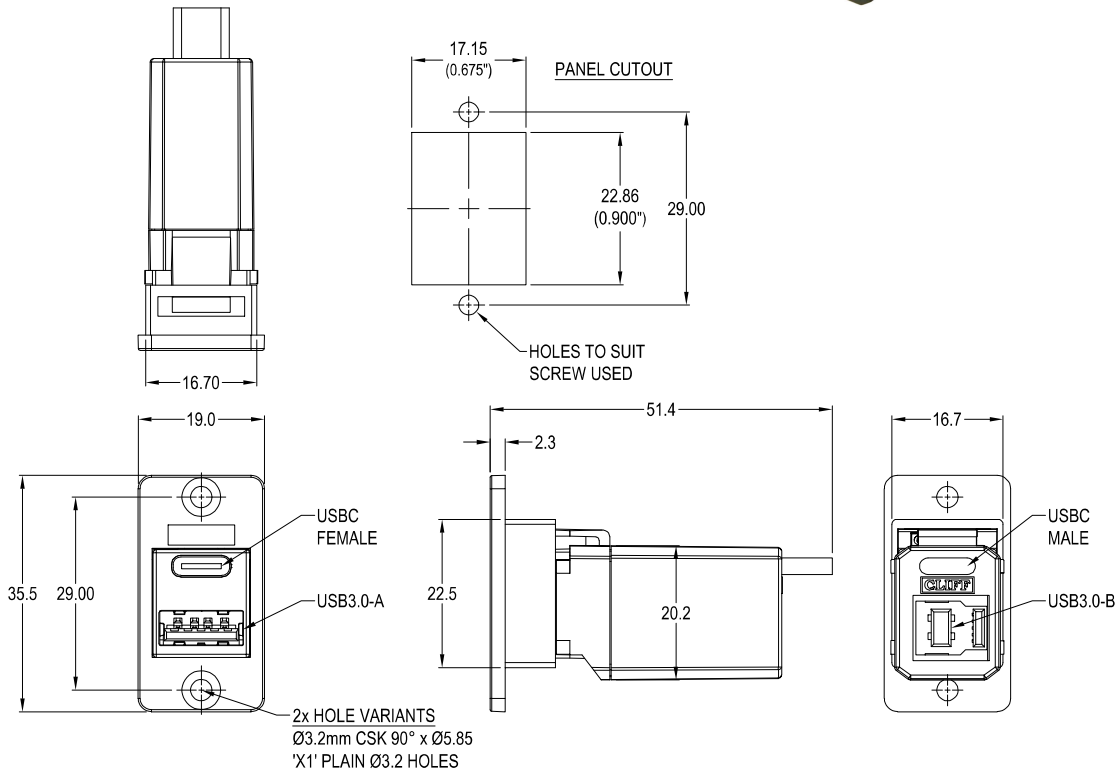


CLIFF

SLIM USBC 3.2 F-M + USB3.0 A-B FRONT MOUNTING METAL FRAME FEEDTHROUGH



VARIANTS

Part No.

- CP30634M** SLIM FM USBC 3.2 F-M + USB3.0 A-B Nickel frame, CSK holes
- CP30634MB** SLIM FM USBC 3.2 F-M + USB3.0 A-B Black metal frame, CSK holes
- CP30634MX1** SLIM FM USBC 3.2 F-M + USB3.0 A-B Nickel frame, Ø3.2 PLAIN holes
- CP30634MBX1** SLIM FM USBC 3.2 F-M + USB3.0 A-B Black metal frame, Ø3.2 PLAIN holes

Feedthrough Features

- Fits standard rectangular cutout.
- Various hole mounting options.
- No soldering or punch termination. Use standard cable for each connector style.
- Low rear profile.

General:

Please note: Functionality is affected by cable quality, length and cable wiring configuration.

Materials:

1. Insert: ABS UL94 V-0 - Black
2. FT Frame: Nickel or Black Plated Zinc Diecast
3. USB Connectors: Composite
4. Contacts: Gold Plated
5. Operating Temperature: -25°C to 70°C

Specification USBC 3.2 F-M

1. Current rating: 5A
2. Life Cycles: 10,000x insertions

Specification USB 3.0 A-B

1. Current rating: 1.5A
2. Life Cycles: 1,500x insertions