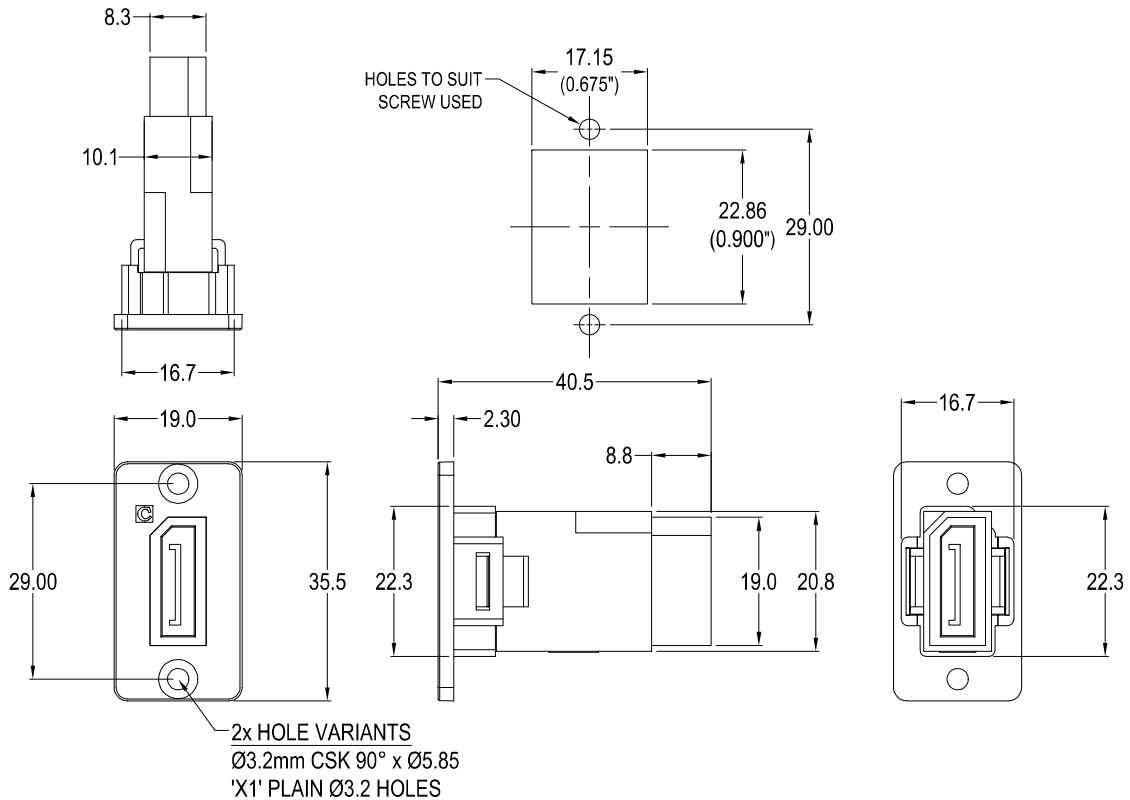




# SLIM DISPLAYPORT FRONT MOUNTING METAL FRAME FEEDTHROUGH



## VARIANTS

### Part No.

**CP30633M**

SLIM FM DisplayPort Nickel frame, CSK holes

**CP30633MB**

SLIM FM DisplayPort Black metal frame, CSK holes

**CP30633MX1**

SLIM FM DisplayPort Nickel frame, Ø3.2 PLAIN holes

**CP30633MBX1**

SLIM FM DisplayPort Black metal frame, Ø3.2 PLAIN holes

### Feedthrough Features

- Fits standard rectangular cutout.
- Various hole mounting options.
- No soldering or punch termination. Use standard cable for each connector style.
- Low rear profile.

### General:

Please note: Functionality is affected by cable quality, length and cable wiring configuration.

DisplayPort 8K 60Hz

### Materials:

1. DP Overmould Centre: ABS UL94 V-0 Black
2. DP Overmould Ends: PBT UL94 V-0 Black
3. DP Connector: LCP UL94 V-0 Black
4. DP Shell: Iron Nickel Plated
5. DP Contacts: Copper Gold Plated
6. FT Frame: Zinc Diecast Nickel or Black Plated

