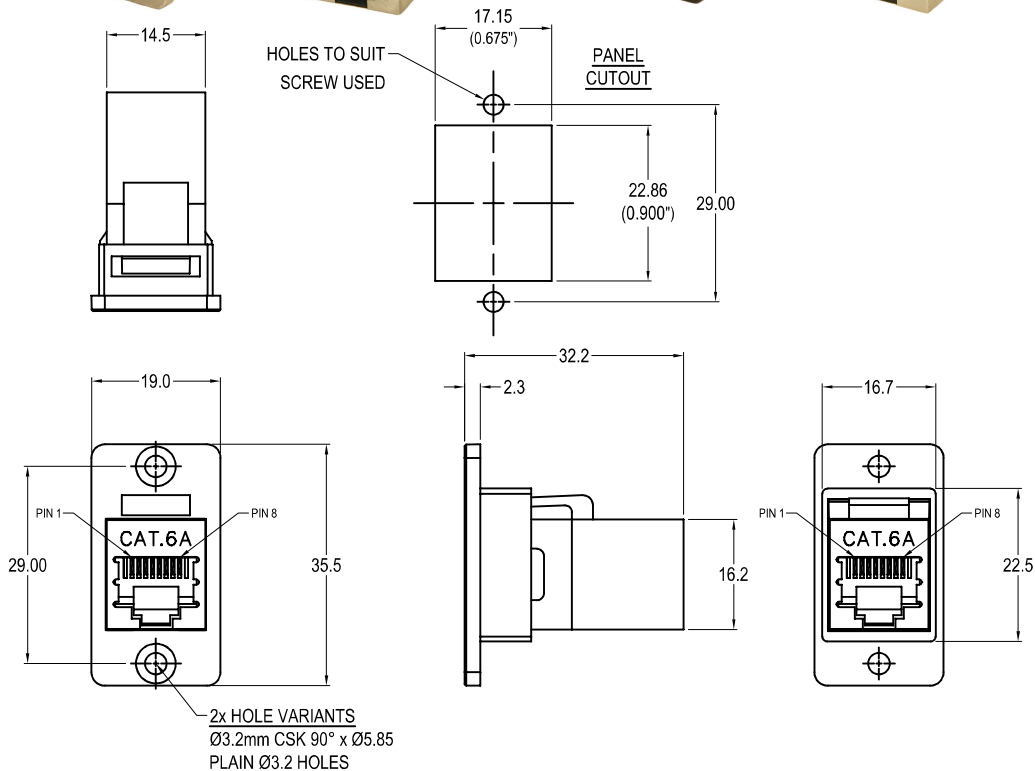
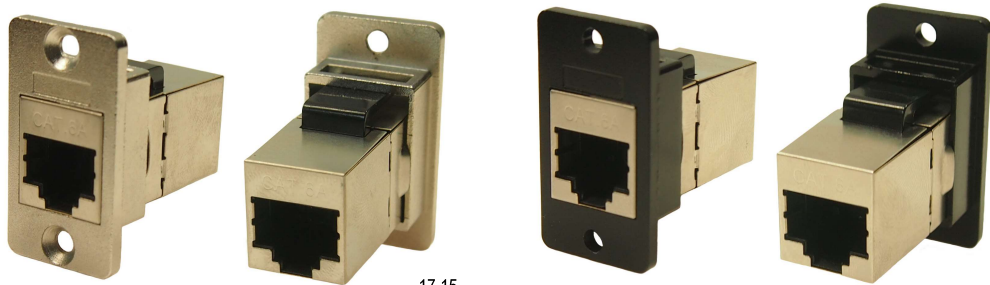


CLIFF

SLIM CAT.6A SHIELDED RJ45 FRONT MOUNTING METAL FRAME FEEDTHROUGH



Part No.

- CP30625SM** SLIM FM Cat.6A Shielded RJ45 Nickel frame, CSK holes
- CP30625SMB** SLIM FM Cat.6A Shielded RJ45 Black metal frame, CSK holes
- CP30625SMX1** SLIM FM Cat.6A Shielded RJ45 Nickel frame, Ø3.2 PLAIN holes
- CP30625SMBX1** SLIM FM Cat.6A Shielded RJ45 Black metal frame, Ø3.2 PLAIN holes

Feedthrough Features

- Fits standard rectangular cutout.
- Various hole mounting options.
- No soldering or punch termination. Use standard cable for each connector style.
- Low rear profile.

General:

Please note: Functionality is affected by cable quality, length and cable wiring configuration.

Material:

1. RJ45 In-Line Coupler: PC/ABS, UL 94V-0, Black colour
2. RJ45 In-Line Coupler Contact: Phosphor Bronze, 3-50 micro inches gold plating over nickel plate.
3. PCB: FR4, UL 94V-0
4. Frame: Diecast, Nickel or Black plated

Performance:

1. T568A & T568B wiring.
2. Meet ISO/IEC 11801 and EN50173
3. Meet ANSI/TIA/EIA 568B.2
4. Operating temperature: Min -10°C Max +70°C