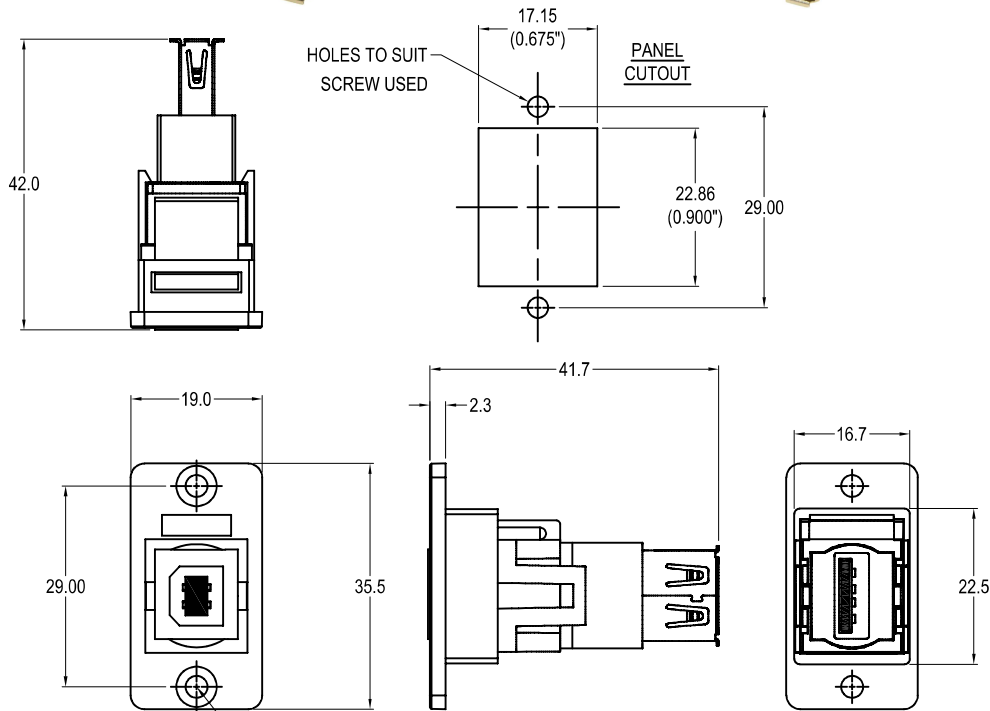


CLIFF

SLIM USB2.0 B-A FRONT MOUNTING METAL FRAME FEEDTHROUGH



VARIANTS

Part No.

CP30607NM

SLIM FM USB2.0 B-A Nickel frame, CSK holes

CP30607NMB

SLIM FM USB2.0 B-A Black metal frame, CSK holes

CP30607NMX1

SLIM FM USB2.0 B-A Nickel frame, Ø3.2 PLAIN holes

CP30607NMBX1

SLIM FM USB2.0 B-A Black metal frame, Ø3.2 PLAIN holes

2x HOLE VARIANTS
Ø3.2mm CSK 90° x Ø5.85
PLAIN Ø3.2 HOLES

Feedthrough Features

- Fits standard rectangular cutout.
- Various hole mounting options.
- No soldering or punch termination. Use standard cable for each connector style.
- Low rear profile.

General:

Please note: Functionality is affected by cable quality, length and cable wiring configuration.

Material:

1. Insert: ABS
2. Frame: Diecast, Nickel or Black plated
3. Shell: Nickel plated steel
4. Contacts: Gold Plated

Notes:

1. Voltage rating: 30V AC
2. Current rating: 1.5 A max
3. Contact resistance: 50mΩ max
4. Insulation resistance: 20MΩ min
5. Dielectric withstanding voltage: 500V AC
6. Operating Temperature: -20°C to 50°C