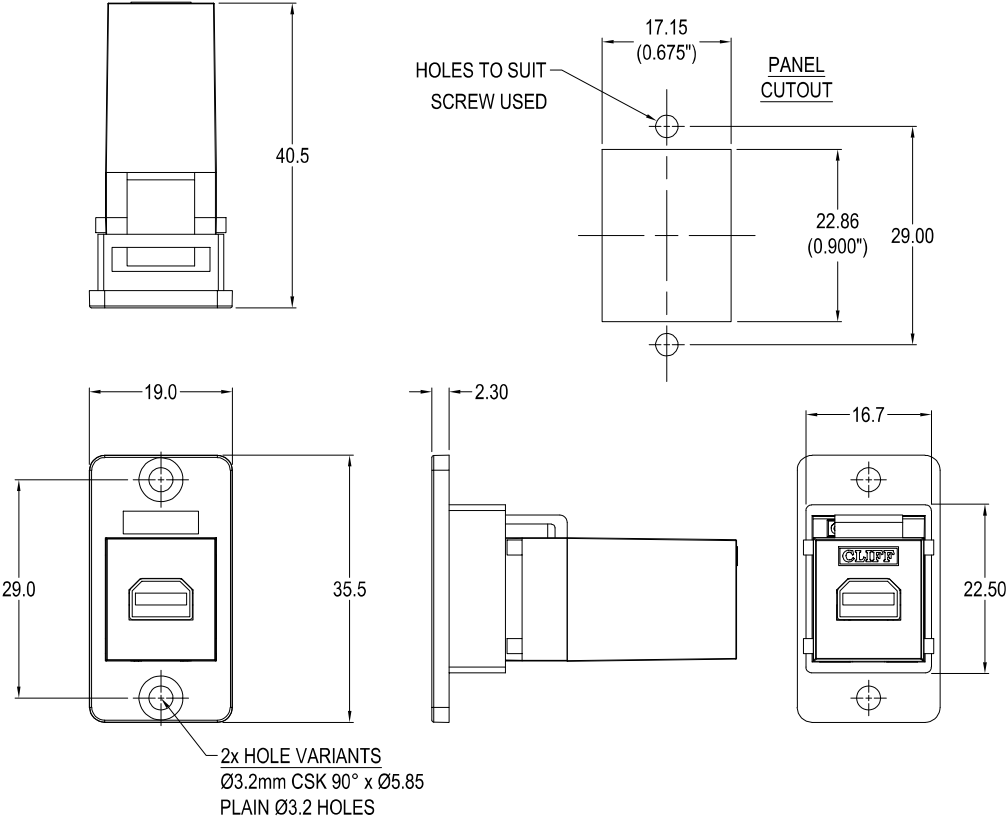




SLIM MINI DISPLAYPORT FRONT MOUNTING METAL FRAME FEEDTHROUGH



VARIANTS

Part No.

CP30602M

SLIM FM Mini Displayport Nickel frame, CSK holes

CP30602MB

SLIM FM Mini Displayport Black metal frame, CSK holes

CP30602MX1

SLIM FM Mini Displayport Nickel frame, Ø3.2 PLAIN holes

CP30602MBX1

SLIM FM Mini Displayport Black metal frame, Ø3.2 PLAIN holes

Feedthrough Features

- Fits standard rectangular cutout.
- Various hole mounting options.
- No soldering or punch termination. Use standard cable for each connector style.
- Low rear profile.

Material:

1. Insert: ABS
2. Frame: Zinc Diecast, Nickel or Black Plated
3. Contacts: Gold Plated

General:

Please note: Functionality is affected by cable quality, length and cable wiring configuration.

