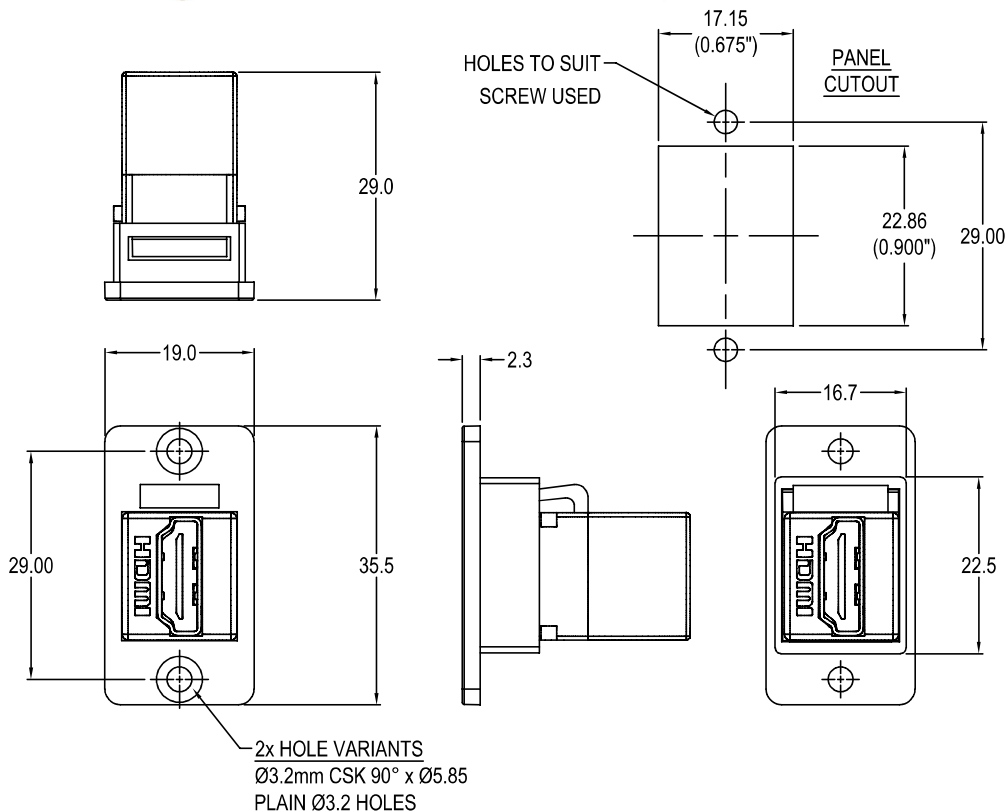
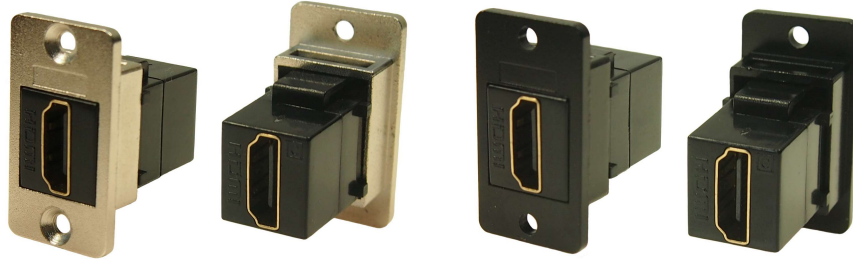




SLIM HDMI FEMALE - FEMALE FRONT MOUNTING METAL FRAME FEEDTHROUGH



Feedthrough Features

- Fits standard rectangular cutout.
- Various hole mounting options.
- No soldering or punch termination. Use standard cable for each connector style.
- Low rear profile.

General:

Please note: Functionality is affected by cable quality, length and cable wiring configuration.

VARIANTS

Part No.

- CP30600GM** SLIM FM HDMI F-F Nickel frame, CSK holes
- CP30600GMB** SLIM FM HDMI F-F Black metal frame, CSK holes
- CP30600GMX1** SLIM FM HDMI F-F Nickel frame, Ø3.2 PLAIN holes
- CP30600GMBX1** SLIM FM HDMI F-F Black metal frame, Ø3.2 PLAIN holes

Material:

1. Insert: ABS UL94 HB
2. Frame: Diecast, Nickel or Black plated
3. Shell: Gold plated
4. Contacts: Gold Plated

