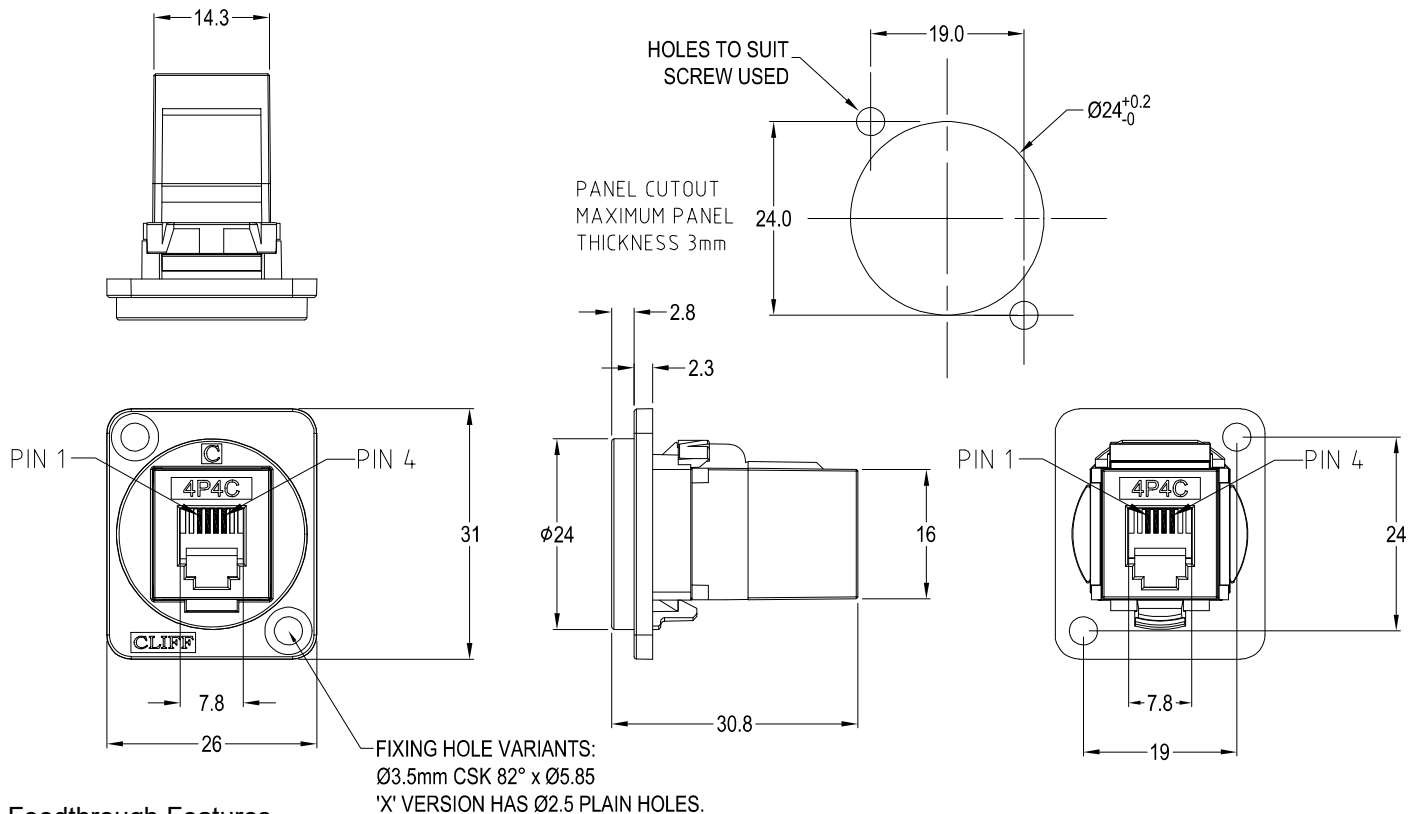


# CLIFF

## 4P4C 7.8mm FEEDTHROUGH CONNECTOR (RJ9/10/22)



### Feedthrough Features

- Fits standard XLR Ø24mm cutout.
- No soldering or punch termination. Use standard cable for each connector style.
- Front or rear mounted.
- Low rear profile

### General:

Please note: Functionality is affected by cable quality, length and cable wiring configuration.

### VARIANTS

#### Part No.

<b>CP30228</b>	4P4C (7.8mm) Black plastic frame, CSK holes
<b>CP30228W</b>	4P4C (7.8mm) White plastic frame, CSK holes
<b>CP30228X</b>	4P4C (7.8mm) Black plastic frame, PLAIN holes
<b>CP30228XW</b>	4P4C (7.8mm) White plastic frame, PLAIN holes

### Material:

- 1) 4P4C In-Line Coupler: ABS, UL HB
- 2) 4P4C Contacts: Phosphor Bronze, 3-50 micro inches gold plating over nickel plate.
- 3) PCB: FR4, UL 94V-0
- 4) Frame: Polyamide 94V-2
- 5) Operating Temperatures: Min -10°C Max +60°C