

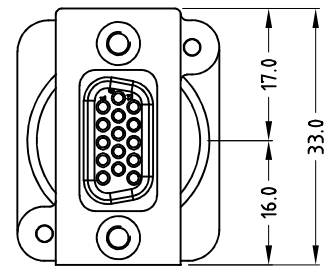
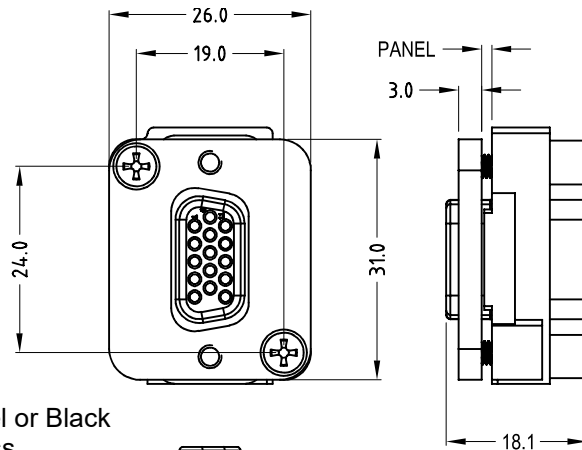
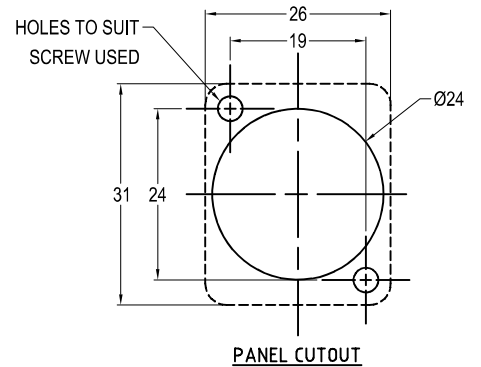
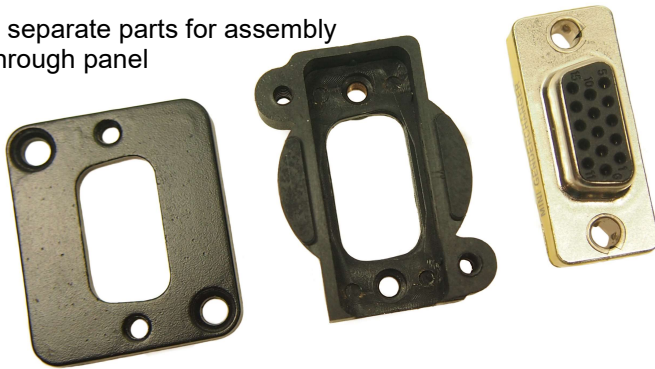
CLIFF

VGA CONNECTOR

This space-saving and economical 15 pin VGA "D-Sub" can be front mounted onto our 1U panels. The front plate is metal with a silver or black finish. The product is in 3 parts for easy assembly.

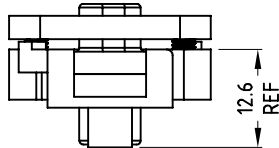


3 separate parts for assembly through panel



Material:

1. Frame: Zinc Diecast, Nickel or Black
2. Rear Holder: GF PA6, Brass
3. VGA Insert: ABS, Brass, Steel



Part No:

- CP30229M** - 15 pin VGA Female - Female, Metal, Front mounting only
CP30229BM - 15 pin VGA Female - Female, Black metal, Front mounting only

