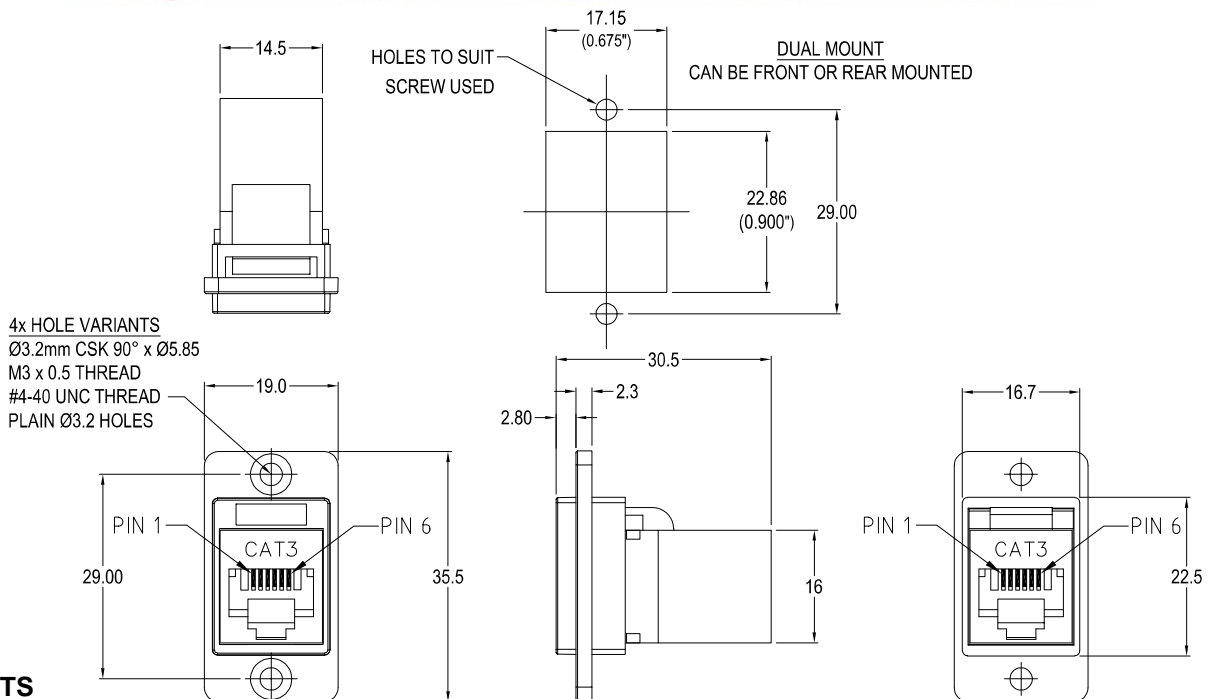


# CLIFF

## DUALSLIM CAT3 RJ12 6P6C METAL FEEDTHROUGH CONNECTOR

Can be front or rear mounted in the panel



### VARIANTS

Part No.

<b>CP30724M</b>	DUALSLIM Cat3 RJ12 6P4C Nickel frame, CSK holes
<b>CP30724MB</b>	DUALSLIM Cat3 RJ12 6P4C Black metal frame, CSK holes
<b>CP30724M3</b>	DUALSLIM Cat3 RJ12 6P4C Nickel frame, M3 holes
<b>CP30724MB3</b>	DUALSLIM Cat3 RJ12 6P4C Black metal frame, M3 holes
<b>CP30724M440</b>	DUALSLIM Cat3 RJ12 6P4C Nickel frame, #4-40 holes
<b>CP30724MB440</b>	DUALSLIM Cat3 RJ12 6P4C Black metal frame, #4-40 holes
<b>CP30724MX1</b>	DUALSLIM Cat3 RJ12 6P4C Nickel frame, Ø3.2 PLAIN holes
<b>CP30724MBX1</b>	DUALSLIM Cat3 RJ12 6P4C Black metal frame, Ø3.2 PLAIN holes

### Feedthrough Features

- Fits standard rectangular cutout.
- Front or rear mounting through the panel.
- Various hole mounting options.
- No soldering or punch termination. Use standard cable for each connector style.
- Low rear profile.

### Material:

1. RJ12 In-Line Coupler: PC/ABS, UL94 V-0 Black
2. RJ12 In-Line Coupler Contact: Phosphor Bronze, 3-50 micro inches gold plating over nickel plate.
3. PCB: FR4, UL94 V-0
4. FT Frame: Diecast, Nickel or Black plated
5. Operating Temperatures: Min -10°C Max +60°C

### General:

Please note: Functionality is affected by cable quality, length and cable wiring configuration.

For further information, contact [sales@cliffuk.co.uk](mailto:sales@cliffuk.co.uk)

© CLIFF 07/2022 ISS.1

**Cliff Electronic Components Limited,**  
 76 Holmethorpe Avenue, Holmethorpe Ind. Estate,  
 Redhill, Surrey RH1 2PF U.K.  
 Tel: +44 (0)1737 771375 Fax: +44 (0)1737 766012



[www.cliffuk.co.uk](http://www.cliffuk.co.uk)