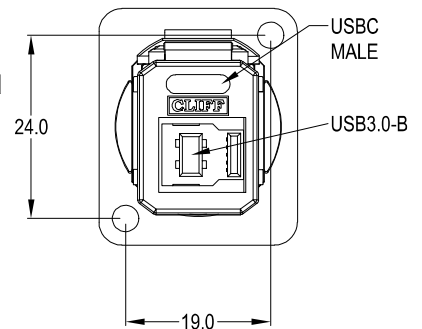
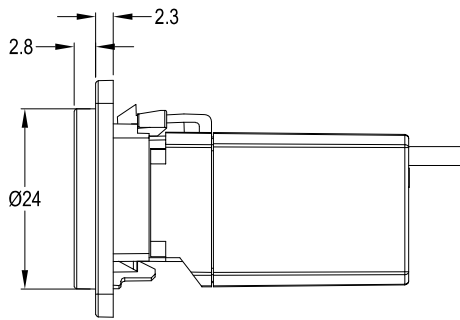
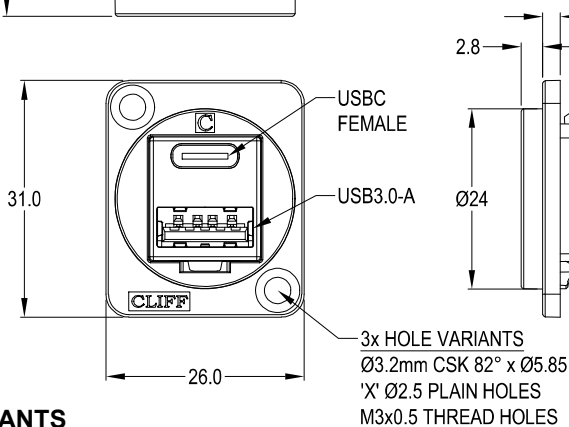
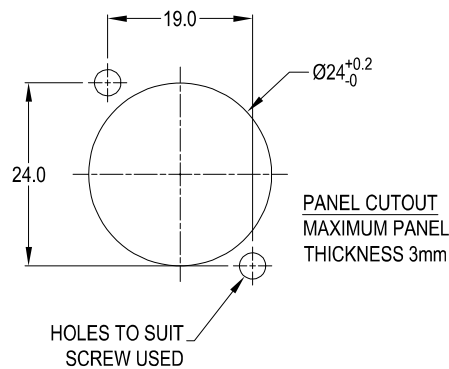
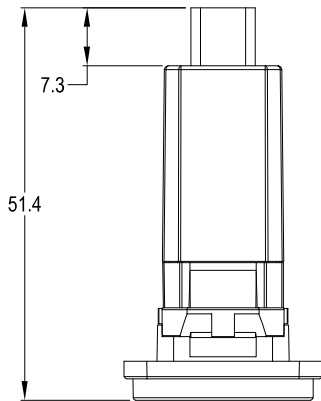


CLIFF

USBC 3.2 F-M + USB3.0 A-B FEEDTHROUGH CONNECTOR



VARIANTS

Part No.

- CP30234** USBC 3.2 F-M + USB3.0 A-B Black plastic frame, CSK holes
- CP30234M** USBC 3.2 F-M + USB3.0 A-B Nickel plated metal frame, CSK holes
- CP30234M3** USBC 3.2 F-M + USB3.0 A-B Nickel plated metal frame, M3 holes
- CP30234MB** USBC 3.2 F-M + USB3.0 A-B Black metal frame, CSK holes
- CP30234M3B** USBC 3.2 F-M + USB3.0 A-B Black metal frame, M3 holes
- CP30234X** USBC 3.2 F-M + USB3.0 A-B Black plastic frame, PLAIN holes

Feedthrough Features

- Fits standard XLR Ø24mm cutout.
- No soldering or punch termination. Use standard cable for each connector style.
- Front or rear mounted.
- Low rear profile

General:

Please note: Functionality is affected by cable quality, length and cable wiring configuration.

Material:

1. Insert: ABS UL94 V-0 - Black
 2. FT Frame: Polyamide UL94-V2 - Black or Nickel / Black Plated Zinc Diecast
 3. USB Connectors: Composite
 4. Contacts: Gold Plated
 5. Operating Temperature: -25°C to 70°C
- Specification USBC 3.2 F-M**
1. Current rating: 5A
 2. Life Cycles: 10,000x insertions
- Specification USB 3.0 A-B**
1. Current rating: 1.5A
 2. Life Cycles: 1,500x insertions