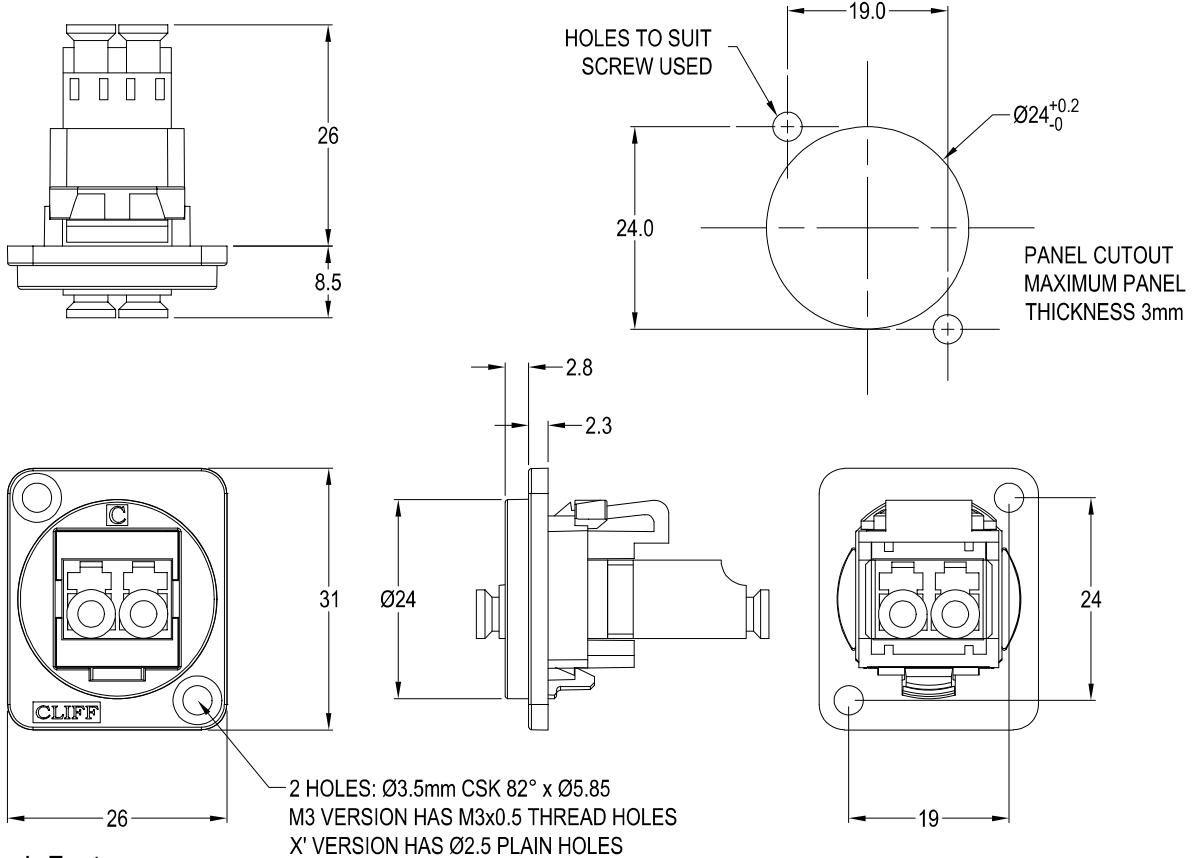




LC DUPLEX SM FEEDTHROUGH CONNECTOR



Feedthrough Features

- Fits standard XLR Ø24mm cutout.
- No soldering or punch termination. Use standard cable for each connector style.
- Front or rear mounted.
- Low rear profile

General:

Please note: Functionality is affected by cable quality, length and cable wiring configuration.

Material:

1. Coupler Body: PC UL94 V-2 - Blue
2. Plastic Frame: PA66 UL94 V-2 - Black
3. Metal Frame: Diecast, Black or Nickel plated
4. Sleeve: Ceramic
5. Dust Cover: PE- White
6. Insert: ABS UL94 V-2 - Black

VARIANTS

Part No.	Description
CP30213	LC Duplex SM Black plastic frame, CSK holes
CP30213M	LC Duplex SM Nickel plated metal frame, CSK holes
CP30213M3	LC Duplex SM Nickel plated metal frame, M3 holes
CP30213MB	LC Duplex SM Black metal frame, CSK holes
CP30213M3B	LC Duplex SM Black metal frame, M3 holes
CP30213X	LC Duplex SM Black plastic frame, PLAIN holes

Notes:

1. Insertion Loss: ≤0.3dB
2. Dust caps may vary

