



METAL FEEDTHROUGH CONNECTORS

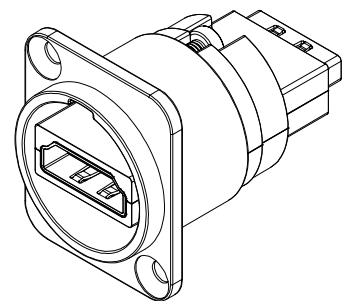
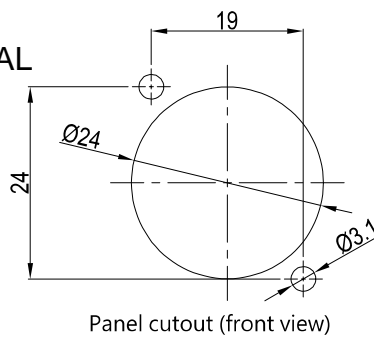
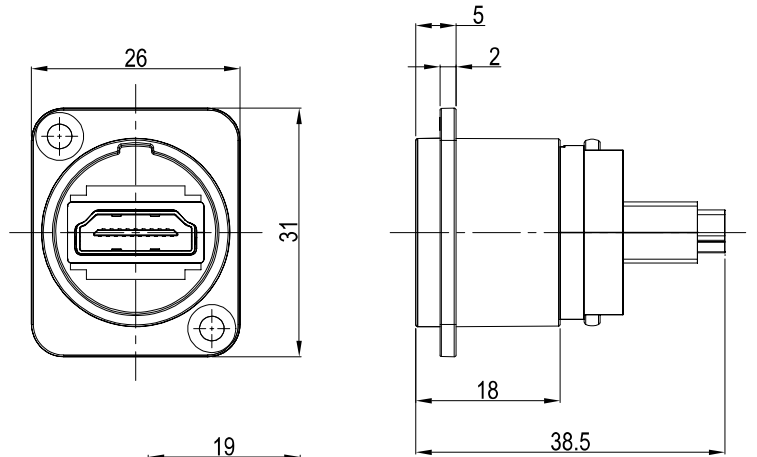


CP30116 - FT XLR HDMI A-A METAL



CP30122 - FT XLR HDMI A-A BLACK METAL

Specification /Technical Data:
Contact Resistance: 30mΩ MAX
Insulation Resistance: 500MΩ min
Dielectric withstanding voltage: 500V AC one minute
Rated Current: 0.5A
Rated Voltage: 40V
Temperature Range: -30°C to 50°C



CP30117 - FT XLR FIREWIRE IEEE 1394 METAL

