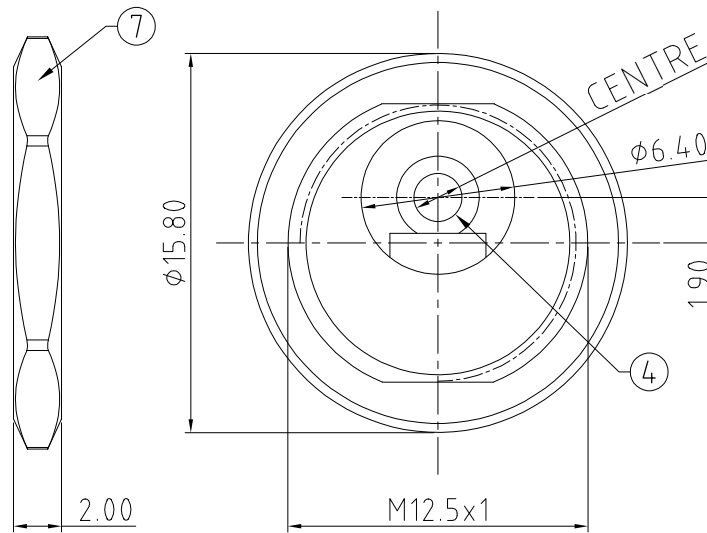
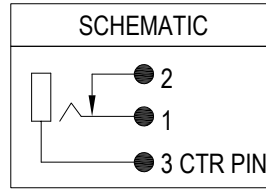
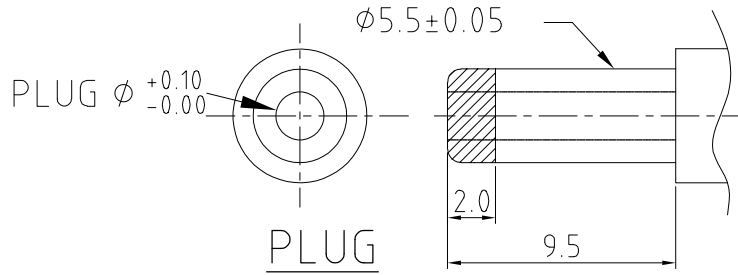
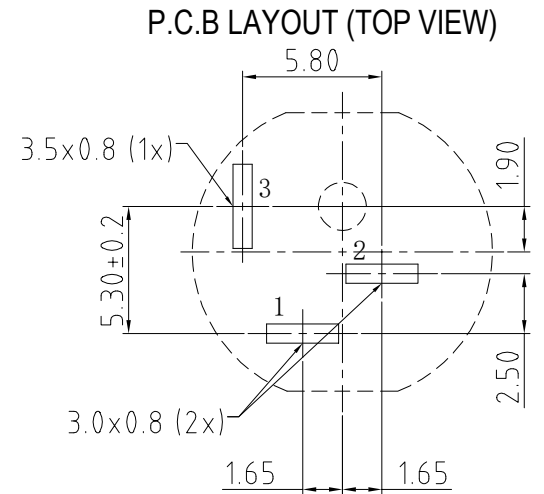
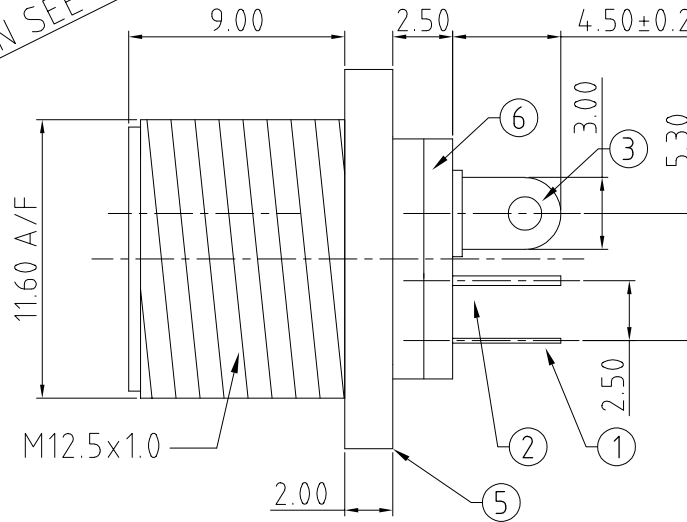


ISS.	AMEND	DATE
1	1st DRAWN	07/05/13
2	A/F DIM ADD	27/11/13
3	PIN 1+3 REVERSE	16/04/15
4	ADD NUT+UPDATE	17/07/25
5	THREAD ERROR+UPDATE	19/09/25



CENTRE PIN SEE TABLE +0/-0.10



ADDITIONAL NUTS AVAILABLE  
SEE FC681473NUT

SPECIFICATION

Rated Voltage : 12VDC  
Rated Current : 1A  
Insulation Resistance: 100MΩ @500VDC  
Life : 5000+ cycles

No.	DESCRIPTION	QTY	MATERIAL	FINISH
7	NUT	1	BRASS	NICKEL PLATE
6	COVER	1	FR4	N/A
5	HOUSING	1	PBT	BLACK
4	CENTRE PIN	1	BRASS	NICKEL PLATE
3	PIN CONTACT	1	BRASS	TIN PLATE
2	CONTACT	1	BRASS	TIN PLATE
1	SPRING	1	SUS	TIN PLATE

PART No	CTR PIN Ø
FC681473	Ø2.10
FC681474	Ø2.50

**RoHS**  
**COMPLIANT**

**TOLERANCE**  
NO DEC. PLACE ± 0.50  
1 DEC. PLACE ± 0.30  
2 DEC. PLACE ± 0.15  
HOLE Ø ±  
ANGLES ± 3°  
UNLESS  
OTHERWISE STATED

**Cliff Electronic Components Ltd.**

76 Holmethorpe Avenue, Holmethorpe Industrial Estate,  
Redhill, Surrey, RH1 2PF, England, UK  
Tel: 01737-771375 Fax: 01737-766012 Website: www.cliffuk.co.uk

THE CONTENTS OF THIS DOCUMENT MUST NOT BE COPIED OR DISCLOSED  
TO A 3rd PARTY WITHOUT WRITTEN PERMISSION OF CLIFF UK. © 2013

DIMENSIONS IN MILLIMETERS UNLESS OTHERWISE STATED. WORK TO DIMENSIONS. REMOVE ALL BURRS. IF IN DOUBT ASK.

MATERIAL: SEE TABLE

FINISH: CLEAN - SEE TABLE

DRAWN: T.J.O.

APPROVED: D.P.J.

3rd ANGLE PROJECTION:

TITLE: THREADED PANEL MOUNT DC SOCKET (2.1mm/2.5mm)

DRWG. No. **FC681473**

FORM: A4DRWGH

DO NOT SCALE