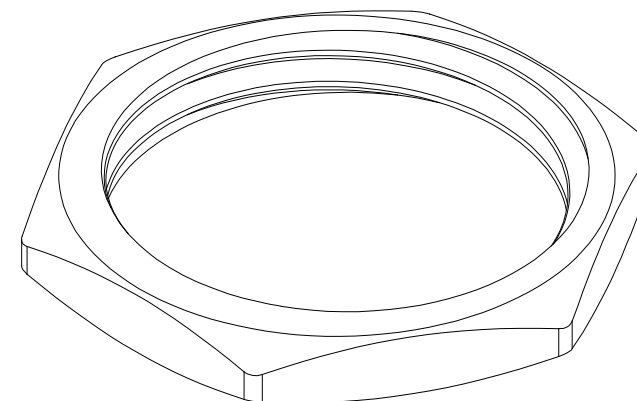
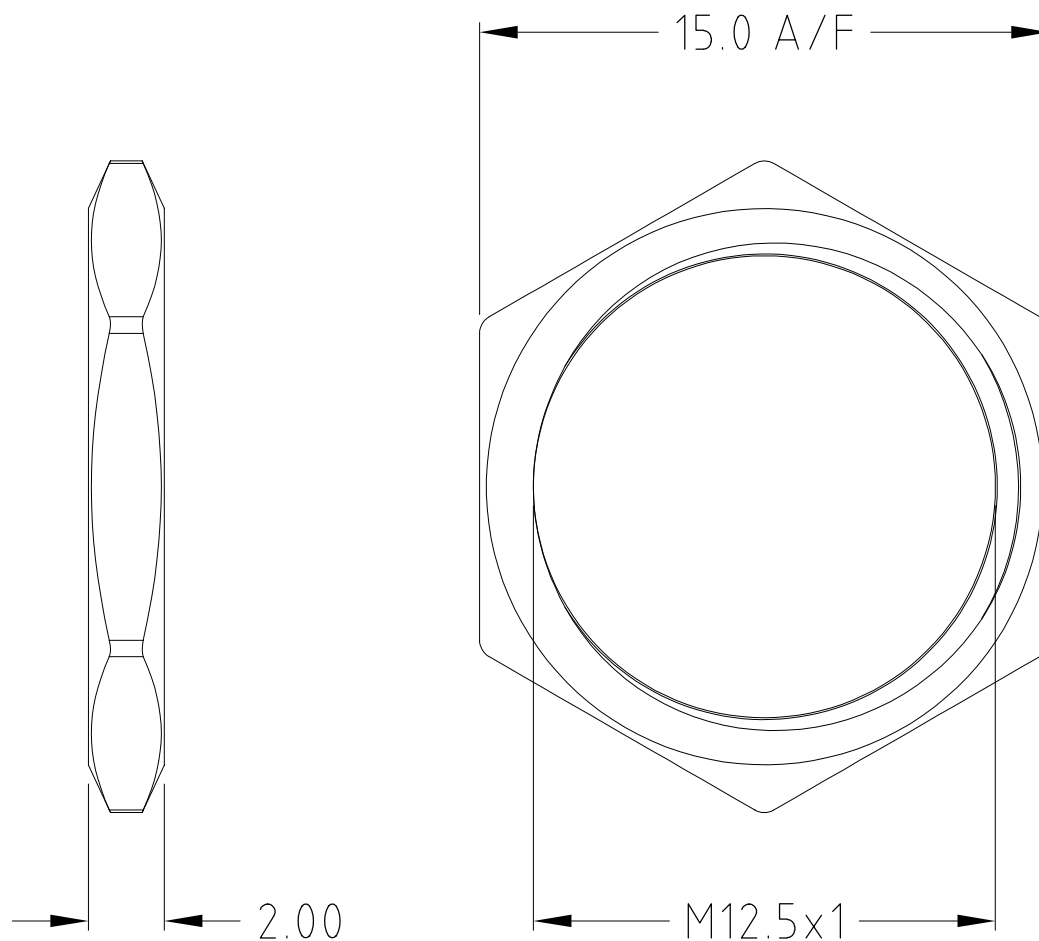


ISS.	AMEND	DATE
1	ISSUED	17/07/25
2	THREAD ERROR	16/09/25



SPARE NUTS FOR FC681473 + FC681474 ONLY

RoHS
✓ **COMPLIANT**

TOLERANCE
 NO DEC. PLACE ± 0.50
 1 DEC. PLACE ± 0.20
 2 DEC. PLACE ± 0.10
 HOLE $\varnothing \pm 0.20$
 ANGLES $\pm ^\circ 1$
 UNLESS
 OTHERWISE STATED

Cliff Electronic Components Ltd.

76 Holmethorpe Avenue, Holmethorpe Industrial Estate,
 Redhill, Surrey, RH1 2PF, England, UK
 Tel: 01737-771375 Fax: 01737-766012 Website: www.cliffuk.co.uk

DIMENSIONS IN MILLIMETERS UNLESS OTHERWISE STATED. WORK TO DIMENSIONS. REMOVE ALL BURRS. IF IN DOUBT ASK.

3rd ANGLE PROJECTION:

DO NOT SCALE

MATERIAL: **BRASS**

FINISH: **NICKEL PLATE**

TITLE: **NUT FOR THREADED PANEL SOCKET**

THE CONTENTS OF THIS DOCUMENT MUST NOT BE COPIED OR DISCLOSED
 TO A 3rd PARTY WITHOUT WRITTEN PERMISSION OF CLIFF UK. © 2025

DRAWN: TJO

APPROVED: DPJ

DRWG. No. **FC681473NUT**

FORM: A4DRWGH