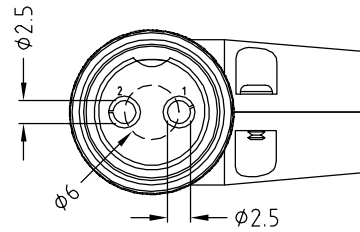
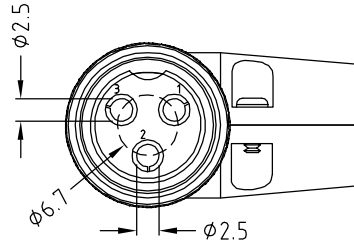


ISS.	AMEND	DATE
1	ISSUED	03/12/16

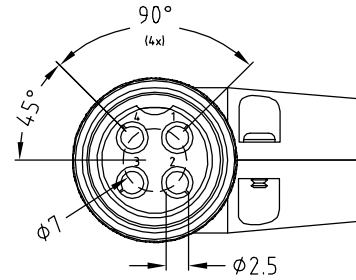
CABLE BOOT OMITTED FOR CLARITY



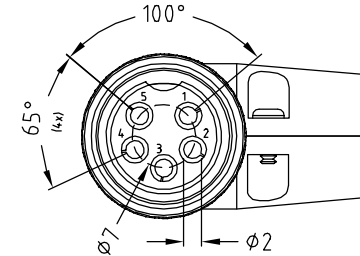
FC684222R
2 POLE



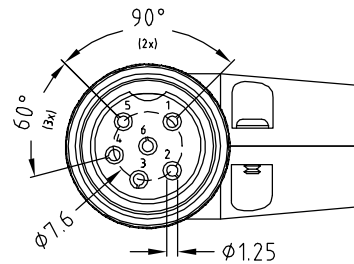
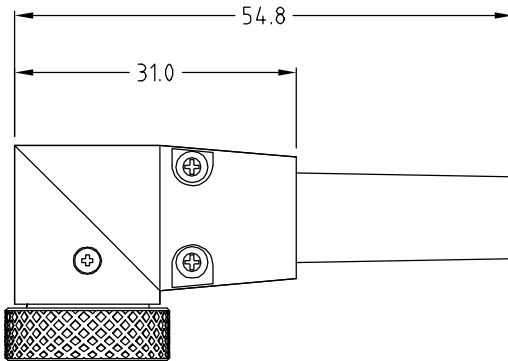
FC684223R
3 POLE



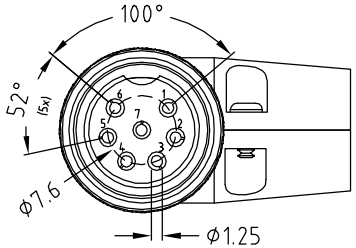
FC684224R
4 POLE



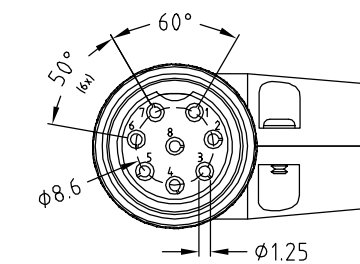
FC684225R
5 POLE



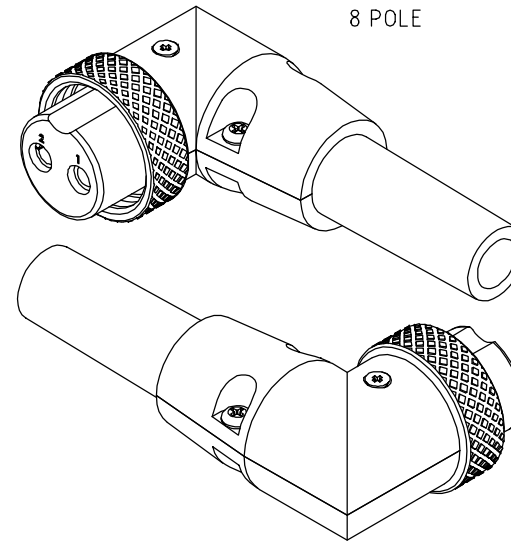
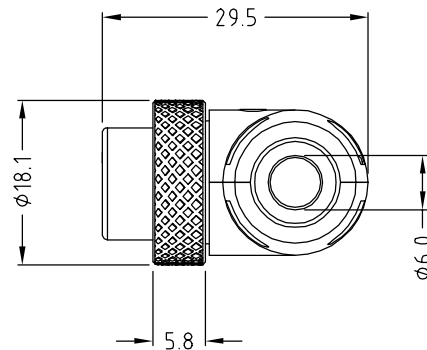
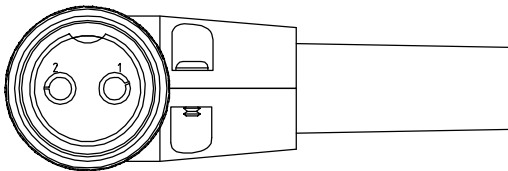
FC684226R
6 POLE



FC684227R
7 POLE



FC684228R
8 POLE



NOTES

- 1) Rated 1A / Pin - 48V max.
- 2) 3D CAD available on request

RoHS
COMPLIANT

TOLERANCE
NO DEC. PLACE ±
1 DEC. PLACE ±
2 DEC. PLACE ±
HOLE Ø ±
ANGLES ±
UNLESS OTHERWISE STATED

DO NOT SCALE

Cliff Electronic Components Ltd.
76 Holmehorpe Avenue, Holmehorpe Industrial Estate,
Redhill, Surrey, RH1 2PF, England, UK
Tel: 01737-771375 Fax: 01737-766012 Website: www.cliffuk.co.uk

DIMENSIONS IN MILLIMETERS UNLESS OTHERWISE STATED. WORK TO DIMENSIONS. REMOVE ALL BURRS. IF IN DOUBT ASK.

3rd ANGLE PROJECTION:

MATERIAL: BRASS / MAZAK
FINISH: CLEAN - TIN / NICKEL PLATE

TITLE: ZC CONNECTOR - 90° PLUG (2-8 POLE)

DRAWN: T.J.O.

APPROVED: D.P.J.

DRWG. No. **FC684222R**

FORM: A4DRWGH