

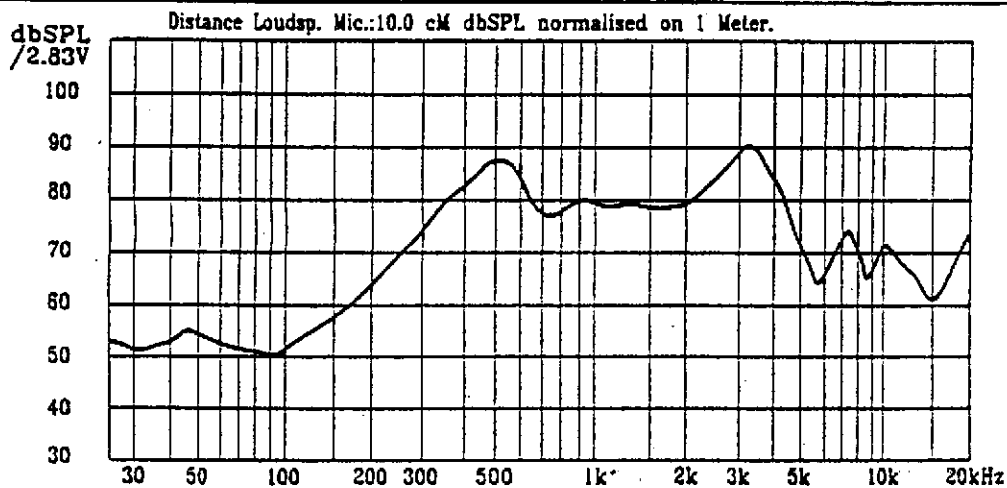
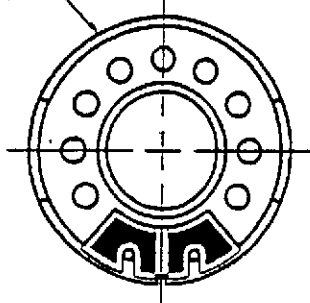
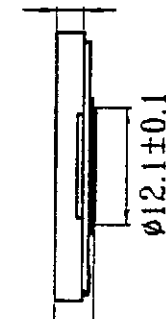
**CET****CLIFF TAIWAN**

sales@cliffuk.co.uk

# SPEAKER SPECIFICATION

**No: 90121102 Model FC68179**

1	MODEL	TMP-030C ( F30P01B )
2	Dimension	Outer Diameter 30 mm Baffle Opening 28.8 mm. Height Refer to drawing Weight 2.8 Gram.
3	Magnet	Materials Rare Earth Size $\phi 9.5 \times 1.5$ mm.
4	Nominal Impedance	8 Ohm $\pm 15\%$ At 1000 Hz
5	Power Rating	Normal 0.1 W. Maximum 0.2 W.
6	Lowest Resonant Frequency	470 $\pm$ 94 Hz
7	Output Sound Pressure Level (S.P.L.)	82 $\pm$ 3 db / 1 Watt 1 Meter Average at 500,600,800,1000 HZ
8	Frequency Range	300~5000 Hz. Average SPL-10 db.
9	Distortion	5 % Maximum At 1000 Hz 0.1 W.
10	Abnormal Sound Test	Must be Normally Tested By 0.89 Volts Sine Wave.
11	Load Test	White Noise with Weighted Filter 0.89 Volts. (RMS) 24 Hrs
12	Operation Temperature	-25°C ~ +60°C 16Hours.
13	Storage temperature	-40°C ~ +70°C 2Hours.
14	Polarity	Diaphragm shall move Forward when Apply a Positive DC Current to the "+" or "Marked" Terminal
15	Remarks	Above specifications on the strength of CNS4784 and CNS4785.

 $\phi 30 \pm 0.2$  $2.7 \pm 0.1$  $\phi 12.1 \pm 0.1$ At Least  
0.5mm  
For  
Diaphragm  
Moving $3.8 \pm 0.2$ 

Unit:mm

9806A