

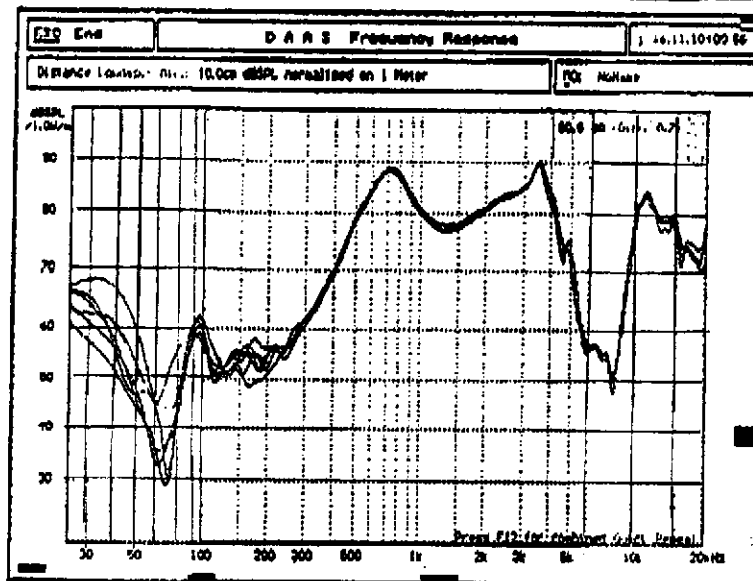
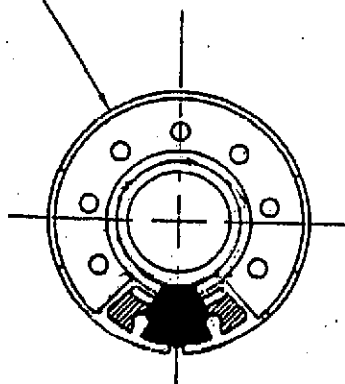
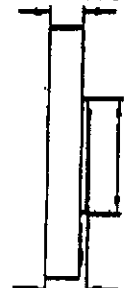
CET**CLIFF TAIWAN**

sales@cliffuk.co.uk

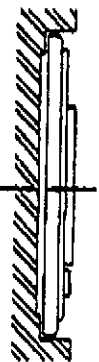
SPEAKER SPECIFICATION

No: 93112210 Model FC68174

1	MODEL	TMP-020CN (F20P24B)
2	Dimension	Outer Diameter 20 mm Baffle Opening 18.7 mm.
		Height Refer to drawing Weight 1.6 Gram.
3	Magnet	Materials Rare Earth Size $\phi 6.5 \times 1.6$ mm.
4	Nominal Impedance	8 Ohm $\pm 15\%$ At 1000 Hz
5	Power Rating	Normal 0.1 W. Maximum 0.2 W.
6	Lowest Resonant Frequency	720 \pm 144 Hz
7	Output Sound Pressure Level (S.P.L.)	81 \pm 3 dB / 1 Watt 1 Meter.
		Average at 800,1000,1200,1500 Hz
8	Frequency Range	400~5000 Hz. Average SPL-10 dB.
9	Distortion	5 % Maximum At 1000 Hz 0.1 W.
10	Abnormal Sound Test	Must be Normally Tested By 0.89 Volts Sine Wave.
11	Load Test	White Noise with Weighted Filter 0.89 Volts. (RMS) 24 Hrs.
12	Operation Temperature	-25°C ~ +50°C
13	Storage Temperature	-40°C ~ +60°C
14	Polarity	Diaphragm shall move Forward when Apply a Positive DC Current to the "+" or "Marked" Terminal.
15	Remarks	Above specifications on the strength of CNS4784 and CNS4785.

 $\phi 20 \pm 0.2$  3.0 ± 0.2  4.1 ± 0.3 $\phi 9.6 \pm 0.2$

At Least
0.5mm
For
Diaphragm
Moving



Unit:mm

0411B