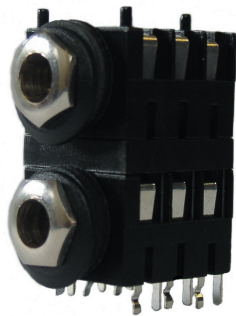


CLIFF

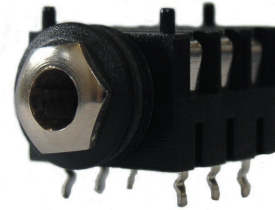
1/4" S4C Jack Sockets



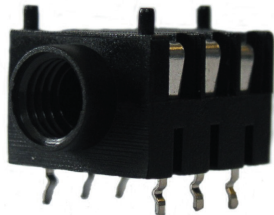
S4C/SH/BBB X2 PC-C
2.9mm NOSE



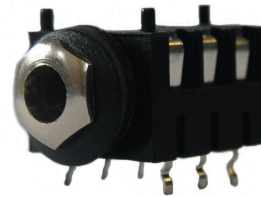
S4C Nut & Washer



S4C/BBB/PC-C
2.9mm NOSE



S4C/BBB/PC-C
3.5mm NOSE



S4C/BBB/PC-C
4.6mm NOSE

The **CLIFF**® S4C is a stacking version of the classic S4 model. It offers the increased packing density of the stacked Jack with the classic domed nut appearance.

This version is produced with 3 nose length options and a fine thread option on one version.

S4C is available in Mono or Stereo with PC-C style contacts only. Make Contacts are not available, if Make contacts are required the traditional S4 has to be used.

Significant features include:

- High Packing density
- PBrz Tinned Contacts for Low Contact Resistance
- Snap in PCB Mounting
- Designed for behind the Panel Mounting
- Tough Nylon Body
- Enhanced Appearance

Cliff Electronic Components, Ltd.

76 Holmethorpe Avenue, Holmethorpe Ind. Est.
Redhill, Surrey RH1 2PF. England

Tel: +44 (0) 1737 771375

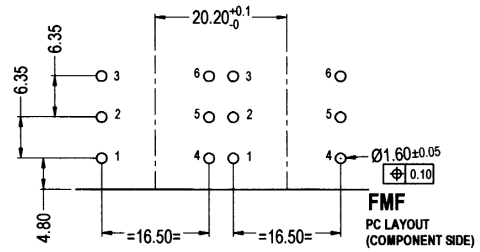
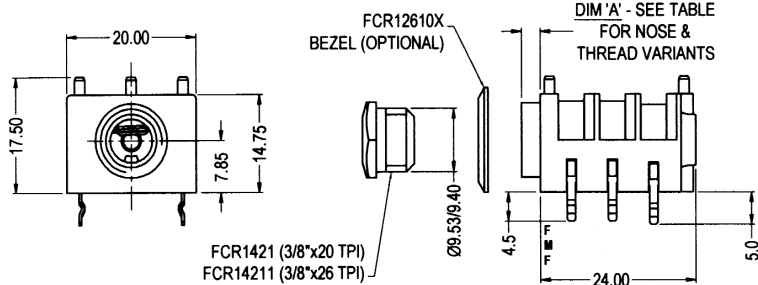
Fax: +44 (0) 1737 766012

Email: sales@cliffuk.co.uk



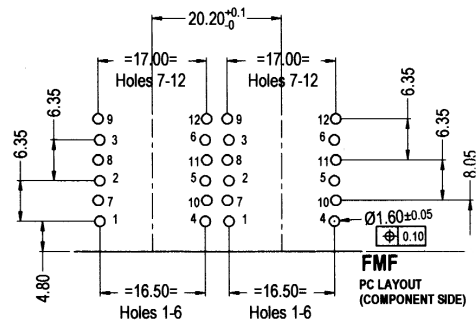
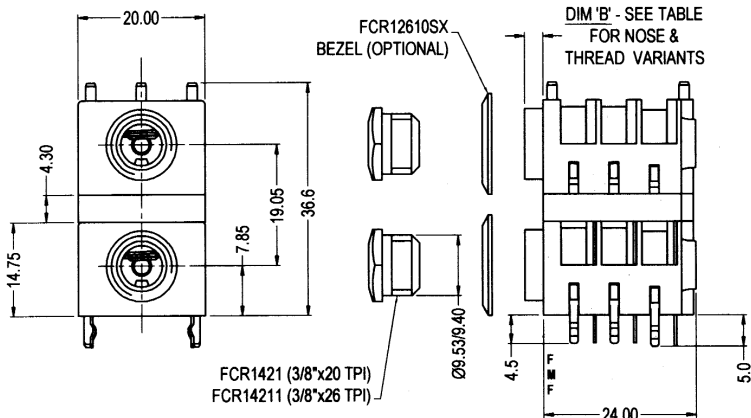
Visit us online at:

www.cliffuk.co.uk



ASSEMBLY VARIANTS			STD.
PART NO.	DIM 'A'	THREAD	
FCR12610	2.9mm	3/8"x20 TPI	
FCR12630	2.9mm	3/8"x26 TPI	
FCR12650	3.5mm	3/8"x20 TPI	
FCR12670	4.6mm	3/8"x20 TPI	●

Part Numbers will vary depending on contact arrangements.



ASSEMBLY VARIANTS			STD.
PART NO.	DIM 'B'	THREAD	
FCR12620	2.9mm	3/8"x20 TPI	
FCR12640	2.9mm	3/8"x26 TPI	
FCR12660	3.5mm	3/8"x20 TPI	
FCR12680	4.6mm	3/8"x20 TPI	●

Part Numbers will vary depending on contact arrangements.

Specification:

- Withstand Voltage:** 2000V DC Min
- Maximum Current:** 5 amp
- Temperature Rating:** -10°C to + 70°C
- Life (Minimum):** 10,000+ Operations. Cr <100mΩ
- UK Pat:** 2314464
- US Pat:** 6116959

Technical Data:

Designed to receive both mono and stereo 1/4" jack plugs, the S4C jack socket is produced from durable grade 1 black nylon with PBrz Tinned Contacts for Low Contact Resistance and superior performance. Kinked PC legs provide stability for PCB wave soldering, the standard PC version is PC type C.

When ordering please state the contact arrangement required when a plug is inserted, using the following code. From the front of the jack socket: B=Break, N=No Contact, for example S4C/SH/BNBX2 is a dual 2 pole stacked mono switched jack socket.

The Jack sockets are supplied in cartons of 500 or 1000pcs and are produced in our China plant.

Drawings available on request. Contact sales@cliffuk.co.uk