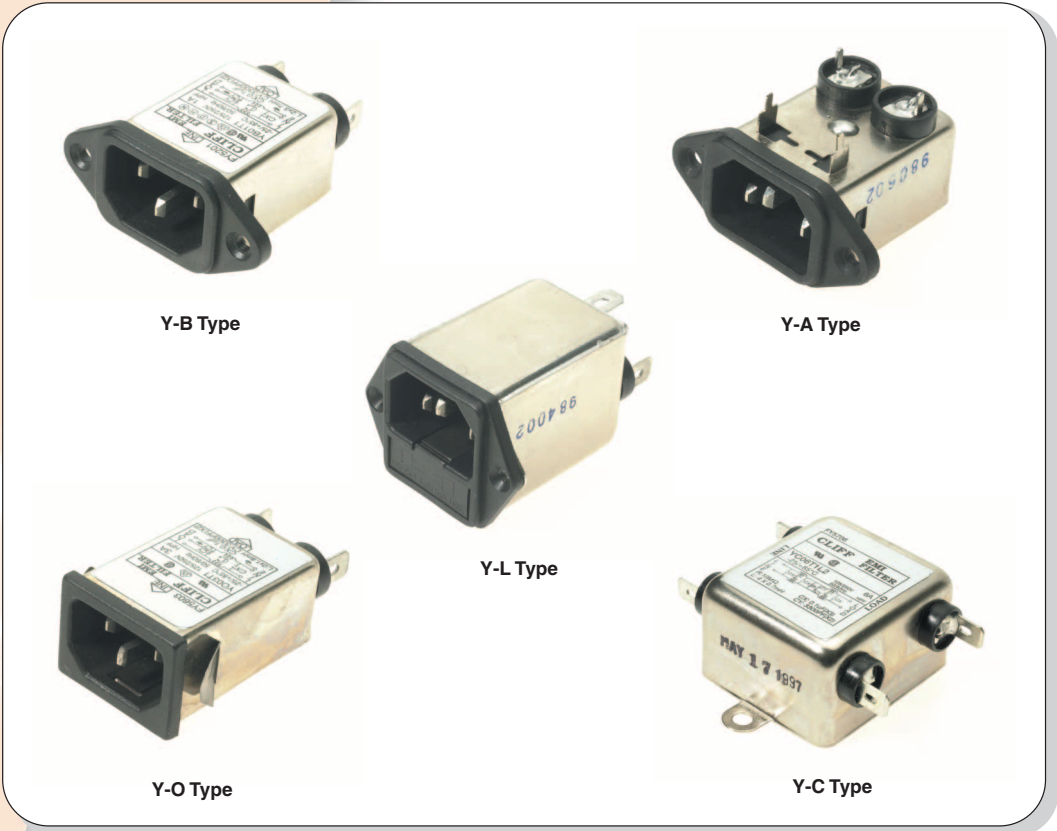




EMI/RFI Filtered Power Input Connectors



The **CLIFF**® EMI/RFI Filters are produced in a range of configurations and are designed to suit most industrial and consumer applications. Models for 1, 3, 6, 10 amp rating are available (with up to 20 amp rating in industrial models) and all production is 100% tested for Insertion loss and Hi Pot test. Products have UL/CSA and most European approvals. Typical applications include digital equipment of all kinds, amplifiers, signal processors, personal computer equipment, power supplies etc.

Reference: For example, Y-A-01-T1 specifies 1A A-Type with vertical 1/4" Faston

Y-Series	Model Type	Rated Current	Tag Type
Y	A	01	T1
	A (Side Tags)	01	T1 - Vertical 1/4" Faston
	B (End Tags)	03	A1 - Horizontal 1/4" Faston
	C	06	T3 - Vertical Solder Tag
	O	10	A3 - Horizontal Solder Tag
	L	15	P - PC on YA-P Series

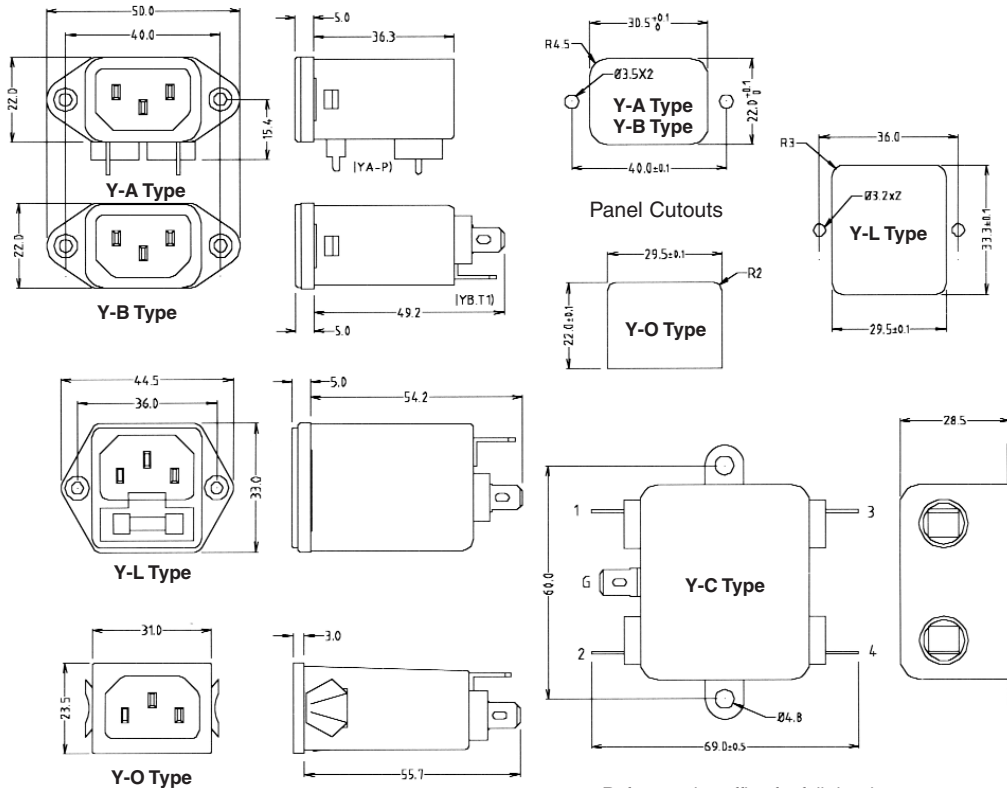
Cliff Electronic Components, Ltd.
76 Holmethorpe Avenue, Holmethorpe Ind. Est.
Redhill, Surrey RH1 2PF. England
Tel: +44 (0) 1737 771375
Fax: +44 (0) 1737 766012
Email: sales@cliffuk.co.uk



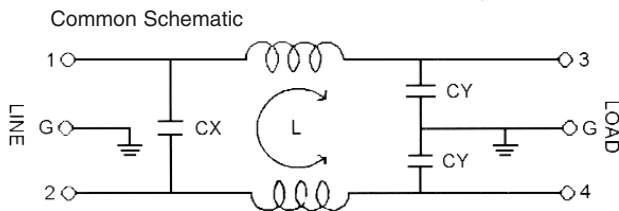
Visit us online at:

www.cliffuk.co.uk

YA and YB are dimensionally identical except for the Tag position. Common Terminal is 1/4" Quick Connect (Faston).



Refer to sales office for full drawings.



A	1	3	6	10
CX (uF)	0.1	0.1	0.1	0.1
CY (PF)	3300	3300	3300	3300
R	-	-	5A 10M	10M
L (mH)	3.7	1.8	0.7	0.3

Specification:

Leakage Current: All models 0.8mA max.

Hi-Pot Test: 2250VDC Line / Ground.

1450VDC Line / Line.

Temperature Rating: -25° C to + 85° C

Insulation Resistance: Minimum 100mΩ at 250VDC.

Approvals:

USA - UL 1283. E 134751

Canada - CSA C22-2. LR 95210-10

Germany - VDE SECC 32, 400; 32,401. Europe refer to sales.

Scandinavia - S.D.N.Fi 4432901

Refer to sales office for approval certificate details.

Cliff is UK agent for Yunpen. For other models see www.yunpen.com

Drawings available on request. Contact sales@cliffuk.co.uk