



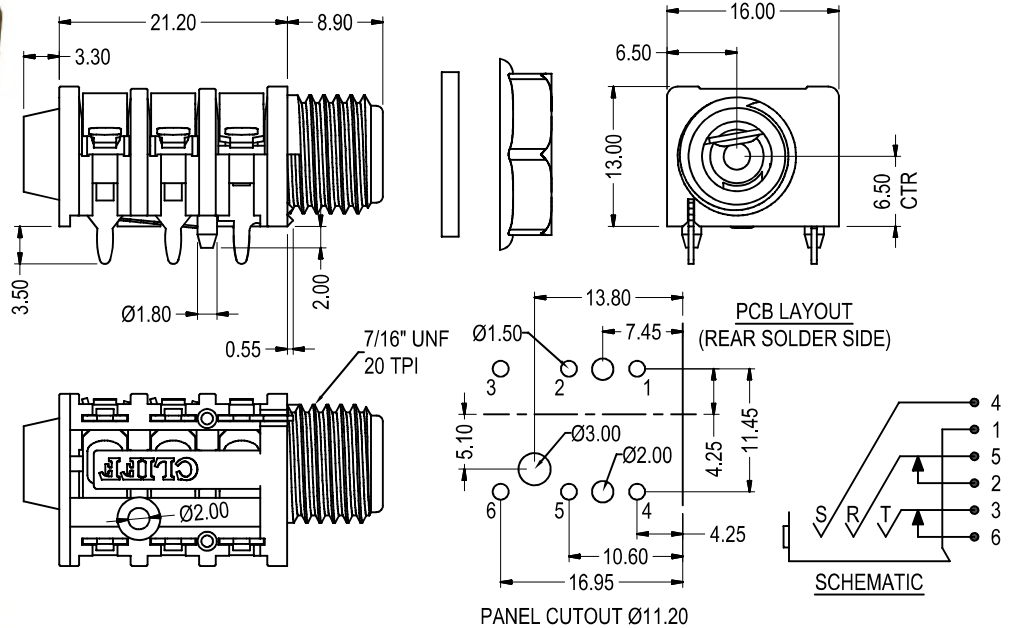
# S1 OFFSET JACK SOCKET WITH CHASSIS GROUND

The Cliff 1/4", offset-nose, space-saving, narrow-body, S1 jack socket offers higher PCB packing densities to equipment manufacturers. This S1 has an integral, chassis-grounding contact, which connects to the barrel of the plug for maximum earth continuity, ensuring the lowest noise signals and maximum safety. Applications for this space-saving jack socket include musical instruments, amplifiers, effects pedals and audio equipment where space is at a premium.



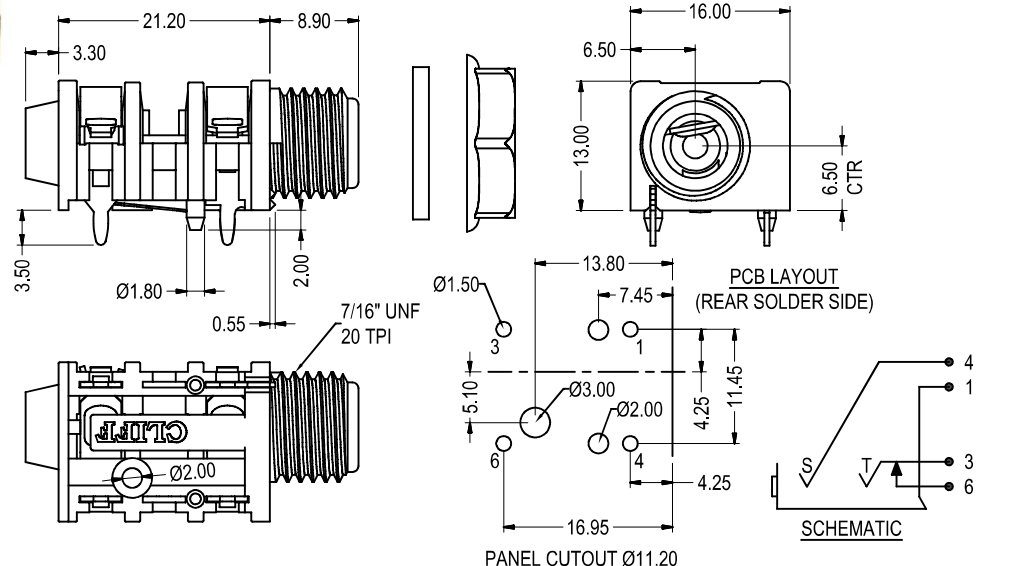
**FCR50051** - S1 Offset Jack Socket Stereo, PC Mounting

**FCR500510** - S1 Offset Jack Socket Stereo, PC Mounting, No Nut



**FCR50055** - S1 Offset Jack Socket Mono, PC Mounting

**FCR500550** - S1 Offset Jack Socket Mono, PC Mounting, No Nut.



**FCR50065** - S1 Offset Jack Socket Mono, PC Mounting, Without chassis ground

**FCR500650** - S1 Offset Jack Socket Mono, PC Mounting, Without chassis ground or Nut