

CLIFF

METAL XLR CONNECTORS

Our metal series XLR connectors will meet the most severe specifications. All contact parts are silver plated to give low noise levels. Available in Nickel or Black finish. Large solder bucket contacts are used to make wiring easy.



FC6100 - 3 PIN FEMALE XLR 3ACF/M. RATED 16A.
FC6101 - 3 PIN FEMALE XLR 3ACF/BM. RATED 16A.



FC6120 - 4 PIN FEMALE XLR 4ACF/M. RATED 9A.
FC6121 - 4 PIN FEMALE XLR 4ACF/BM. RATED 9A.

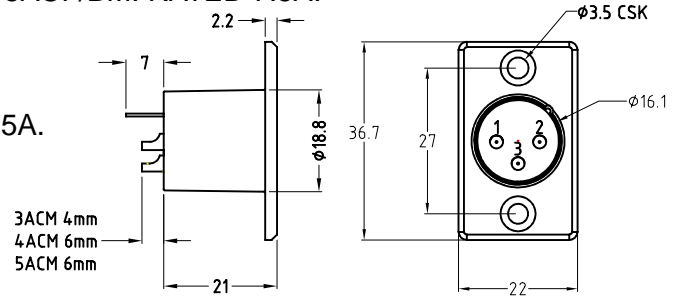


FC6170 - 5 PIN FEMALE XLR 5ACF/M. RATED 7.5A
FC6171 - 5 PIN FEMALE XLR 5ACF/BM. RATED 7.5A.



FC6187 - 7 PIN FEMALE 7ACF/M. RATED 5A.

Specification
 Contact Resistance: $\leq 5m\Omega$
 Insulation Resistance: $\geq 5000M\Omega$
 Withstand Voltage: 1400V
 Durability(Mating & Unmating): ≥ 2000
 Temperature range: -20°C to +80°C



ACM TYPICAL DIMENSIONS



FC6105 - 3 PIN MALE XLR 3ACM/M. RATED 16A.
FC6106 - 3 PIN MALE XLR 3ACM/BM. RATED 16A.



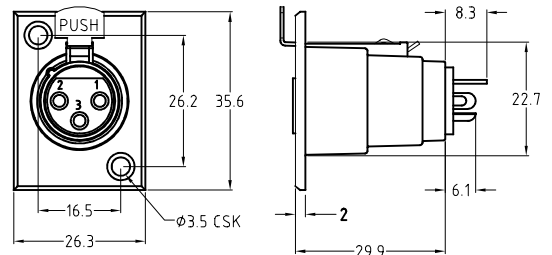
FC6125 - 4 PIN MALE XLR 4ACM/BM. RATED 9A.
FC6126 - 4 PIN MALE XLR 4ACM/BM. RATED 9A.



FC6175 - 5 PIN MALE XLR 5ACM/M. RATED 7.5A
FC6176 - 5 PIN MALE XLR 5ACM/BM. RATED 7.5A



FC6185 - 7 PIN MALE 7ACM/M. RATED 5A.



ACF TYPICAL DIMENSIONS

CLIFF

METAL XLR CONNECTORS



FC6140 - 3 PIN FEMALE XLR 3APF/M. RATED 16A.
FC6141 - 3 PIN FEMALE XLR 3APF/BM. RATED 16A.



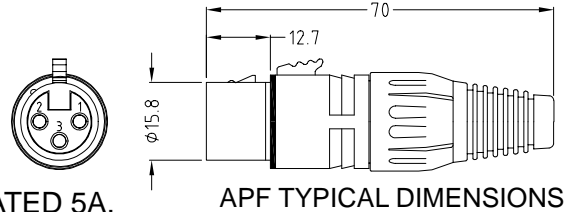
FC6150 - 4 PIN FEMALE XLR 4APF/M. RATED 10A.
FC6151 - 4 PIN FEMALE XLR 4APF/BM. RATED 10A.



FC6165 - 5 PIN FEMALE XLR 5APF/M. RATED 7.5A.
FC6166 - 5 PIN FEMALE XLR 5APF/BM. RATED 7.5A.



FC6182 - 7 PIN FEMALE 7APF/M. RATED 5A.



APF TYPICAL DIMENSIONS



FC6130 - 3 PIN MALE XLR 3APM/M. RATED 16A.
FC6131 - 3 PIN MALE XLR 3APM/BM. RATED 16A.



FC6155 - 4 PIN MALE XLR 4APM/M. RATED 10A.
FC6156 - 4 PIN MALE XLR 4APM/BM. RATED 10A.



FC6160 - 5 PIN MALE XLR 5APM/M. RATED 7.5A.
FC6161 - 5 PIN MALE XLR 5APM/BM. RATED 7.5A.

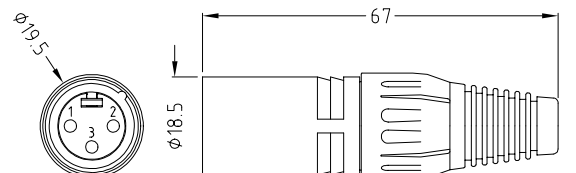


FC6180 - 7 PIN MALE PLUG 7APM/M. RATED 5A.

Specification

Max cable size
 3 pole - 2.5mm²
 4 pole - 1.0mm²
 5 pole - 1.0mm²
 7 pole - 1.0mm²

Contact Resistance: 3 pole <5mΩ
 4-7 pole <7mΩ
 Insulation Resistance: >5000MΩ
 Withstand Voltage: 1400V
 Capacitance: <4 Pf



APM TYPICAL DIMENSIONS