

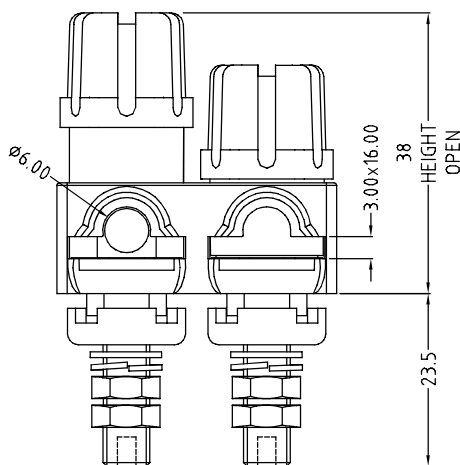
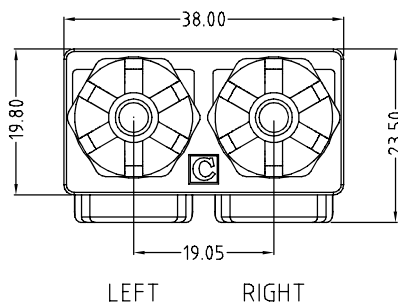
CLIFF

TERMINAL TPP60



TPP60

Dual version of TP60. Rated 60A. with 3mm wide slot and $\text{\O}6\text{mm}$ cross hole. Castellated knob. Clear or coloured. Metal parts Nickel or Gold plated. Short, long or PC mounting spindles. The usual Cliff mounting options are available subject to minimum quantities.



Specification

Maximum Current: 60A

Contact Resistance: Nickel <math><30\text{m}\Omega</math>, Gold <math><20\text{m}\Omega</math>

Temperature Rating: -20°C to $+80^{\circ}\text{C}$

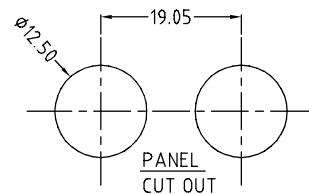
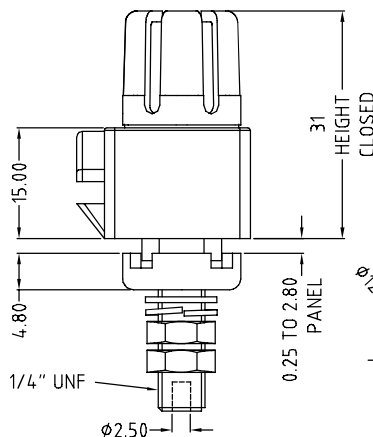
Flammability: Minimum UL 94HB

Part Nos.

CL159842C - TPP60CSG Clear Red/Black Gold Plated

CL159855 - TPP60S Red/Black Nickel Plated

CL159856 - TPP60S Black/Red Nickel Plated



© CLIFF 12/2021 ISS.3

Cliff Electronic Components Limited,
76 Holmethorpe Avenue, Holmethorpe Ind. Estate,
Redhill, Surrey RH1 2PF U.K.
Tel: +44 (0)1737 771375 Fax: +44 (0)1737 766012



www.cliffuk.co.uk