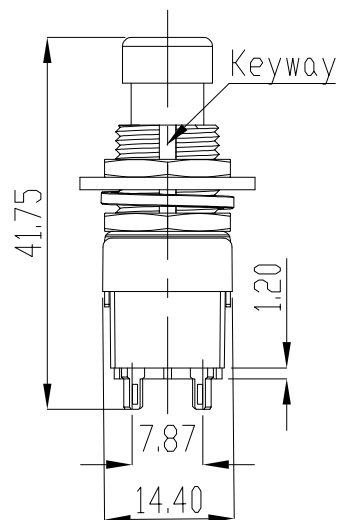
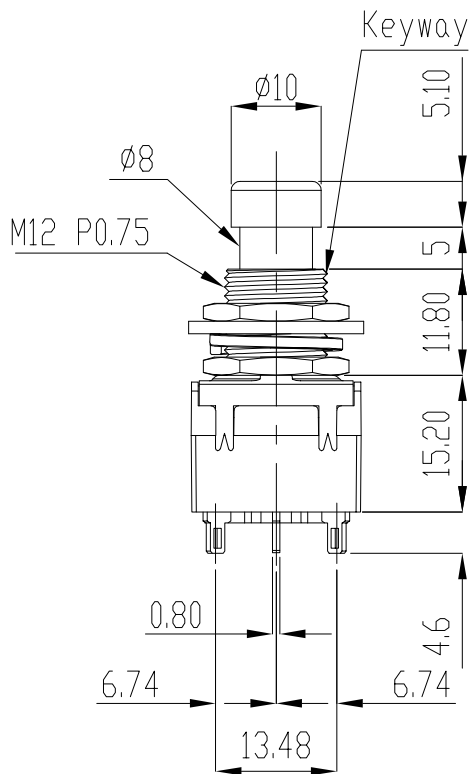
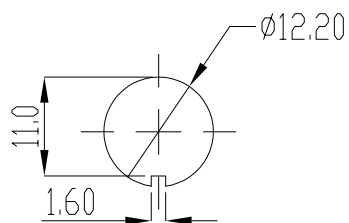
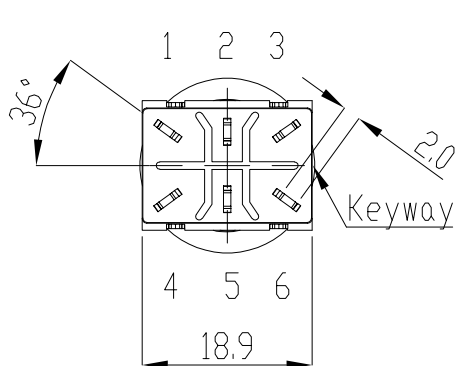
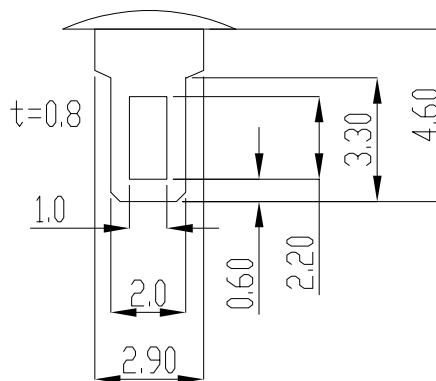


ISS.	AMEND	DATE
1	WAS ON FC7102	15/02/18
2	LARGER S/TAGS	22/11/18



Solder Terminal
(Ratio 5:1)



Panel Thickness :
3.0mm Max.

1. Rating: AC 125V 4A 250V 2A
2. Contact R.: 50mΩ Max.
3. Insulation R.: DC 500V 100MΩ Min.
4. Dielectric Strength: AC 1500V 1 minute.
5. Electrical Life: 50,000 make-and-break cycles at full load.
6. Operating temperature: -20°C~65°C

PART No.	SWITCH TYPE
FC7105	DPDT MOMENTARY
FC71055	DPDT ON/OFF

RoHS
COMPLIANT

TOLERANCE
NO DEC. PLACE ±
1 DEC. PLACE ±
2 DEC. PLACE ±
HOLE Ø ±
ANGLES ±
UNLESS
OTHERWISE STATED

1st DRAWN 20/10/93

Cliff Electronic Components Ltd.

76 Holmethorpe Avenue, Holmethorpe Industrial Estate,
Redhill, Surrey, RH1 2PF, England, UK
Tel: 01737-771375 Fax: 01737-766012 Website: www.cliffuk.co.uk

DIMENSIONS IN MILLIMETERS UNLESS OTHERWISE STATED. WORK TO DIMENSIONS. REMOVE ALL BURRS. IF IN DOUBT ASK.

3rd ANGLE PROJECTION:

DO NOT SCALE

MATERIAL: Ni HARDWARE / TIN PLATED / AS MOULDED

TITLE: P/B SWITCH DPDT - SOLDER TAG

FINISH: BRASS / STEEL / PPS

THE CONTENTS OF THIS DOCUMENT MUST NOT BE COPIED OR DISCLOSED
TO A 3rd PARTY WITHOUT WRITTEN PERMISSION OF CLIFF UK. © 1993

DRAWN: T.J.O.

APPROVED: D.P.J.

DRWG. No. **FC7105**

FORM: A4DRWGf