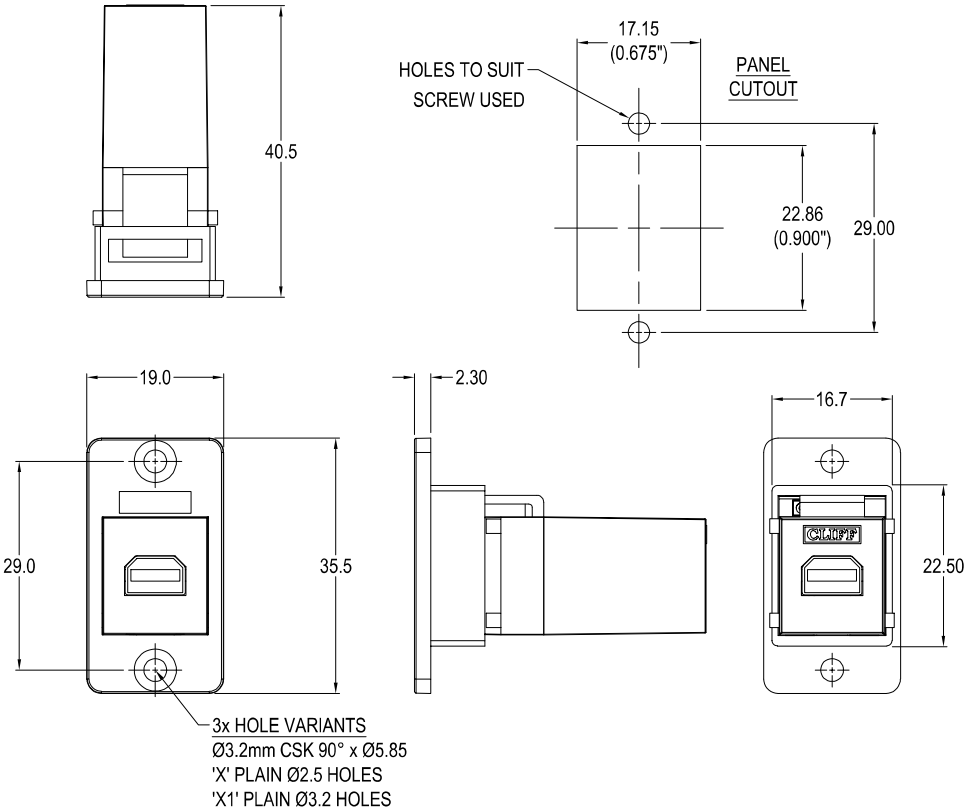




SLIM MINI DISPLAYPORT FRONT MOUNTING FEEDTHROUGH CONNECTOR



VARIANTS

Part No.

- CP30602** SLIM FM Mini Displayport Black plastic frame, CSK holes
- CP30602X** SLIM FM Mini Displayport Black plastic frame, Ø2.5 PLAIN holes
- CP30602X1** SLIM FM Mini Displayport Black plastic frame, Ø3.2 PLAIN holes

Feedthrough Features

- Fits standard rectangular cutout.
- Various hole mounting options.
- No soldering or punch termination. Use standard cable for each connector style.
- Low rear profile.

Material:

1. Insert: ABS
2. Frame: Polyamide UL94 V2
3. Contacts: Gold Plated

General:

Please note: Functionality is affected by cable quality, length and cable wiring configuration.

For further information, contact sales@cliffuk.co.uk

