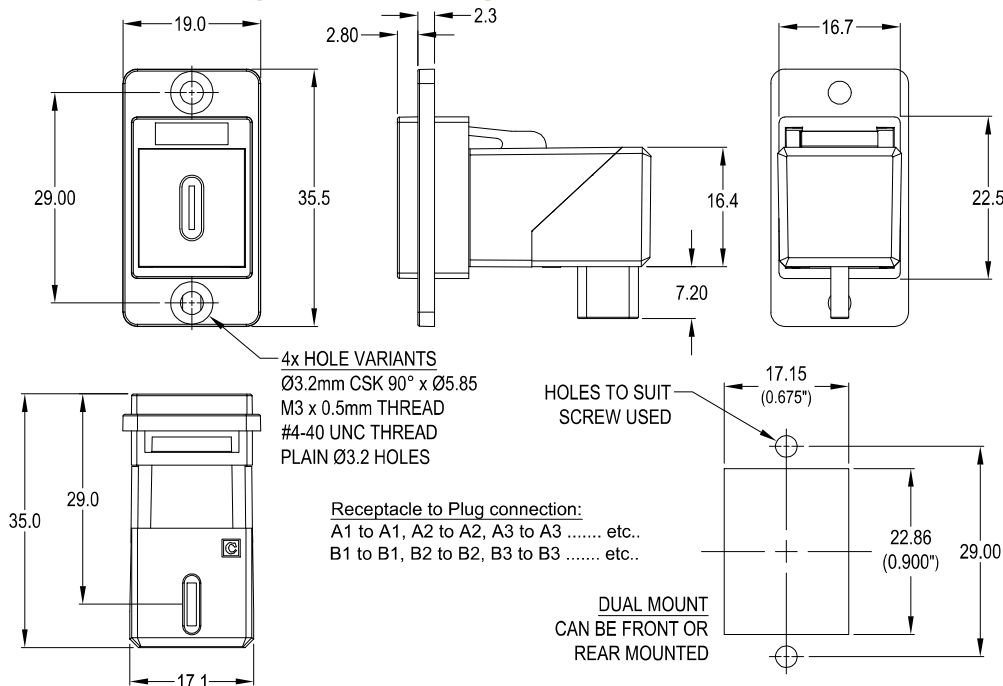


CLIFF

DUALSLIM USB-C F-M RIGHT ANGLE METAL FEEDTHROUGH

Can be front or rear mounted in the panel



VARIANTS

Part No.

CP30756M	RAFT DUALSLIM USB-C F-M Nickel frame, CSK holes
CP30756MB	RAFT DUALSLIM USB-C F-M Black metal frame, CSK holes
CP30756M3	RAFT DUALSLIM USB-C F-M Nickel frame, M3 holes
CP30756MB3	RAFT DUALSLIM USB-C F-M Black metal frame, M3 holes
CP30756M440	RAFT DUALSLIM USB-C F-M Nickel frame, #4-40 holes
CP30756MB440	RAFT DUALSLIM USB-C F-M Black metal frame, #4-40 holes
CP30756MX1	RAFT DUALSLIM USB-C F-M Nickel frame, Ø3.2 PLAIN holes
CP30756MBX1	RAFT DUALSLIM USB-C F-M Black metal frame, Ø3.2 PLAIN holes

Feedthrough Features

- Fits standard rectangular cutout.
- Front or rear mounting through the panel.
- Various hole mounting options.
- No soldering or punch termination. Use standard cable for each connector style.
- Low rear profile.
- 90° or right angle rear cable entry.

General:

Please note: Functionality is affected by cable quality, length and cable wiring configuration.

Materials:

Frame: Nickel Plated Zinc Diecast

RAFT Insert: ABS, UL94 HB

USBC Insulator: LCP, UL94 V-0

USB-C (3.1) Specification:

Maximum Rated Current - 3A

Maximum Working Voltage - 30V

Dielectric Withstanding Voltage - 100VAC (min) 1 minute

Contact Resistance - 40mΩ maximum

Insulation Resistance - 100 MΩ minimum @100V DC

Insertion Life - 10,000 Cycles

Power Delivery (PD) Compatible - Yes